

Bilateral lesions of the basal ganglia and thalami (central grey matter)—pictorial review

Van Cauter, Sofie; Severino, Mariasavina; Ammendola, Rosamaria; Van Berkel, Brecht; Vavro, Hrvoje; van den Hauwe, Luc; Rumboldt, Zoran

Source / Izvornik: **Neuroradiology, 2020, 62, 1565 - 1605**

Journal article, Published version

Rad u časopisu, Objavljena verzija rada (izdavačev PDF)

<https://doi.org/10.1007/s00234-020-02511-y>

Permanent link / Trajna poveznica: <https://urn.nsk.hr/urn:nbn:hr:184:614650>

Rights / Prava: [Attribution-NonCommercial 4.0 International/Imenovanje-Nekomercijalno 4.0 međunarodna](#)

Download date / Datum preuzimanja: **2024-08-08**



Repository / Repozitorij:

[Repository of the University of Rijeka, Faculty of Medicine - FMRI Repository](#)





Bilateral lesions of the basal ganglia and thalami (central grey matter)—pictorial review

Sofie Van Cauter^{1,2} · Mariasavina Severino³ · Rosamaria Ammendola³ · Brecht Van Berkel^{1,2} · Hrvoje Vavro⁴ · Luc van den Hauwe^{5,6} · Zoran Rumboldt^{7,8}

Received: 26 May 2020 / Accepted: 30 July 2020
© Springer-Verlag GmbH Germany, part of Springer Nature 2020

Abstract

The basal ganglia and thalami are paired deep grey matter structures with extensive metabolic activity that renders them susceptible to injury by various diseases. Most pathological processes lead to bilateral lesions, which may be symmetric or asymmetric, frequently showing characteristic patterns on imaging studies. In this comprehensive pictorial review, the most common and/or typical genetic, acquired metabolic/toxic, infectious, inflammatory, vascular and neoplastic pathologies affecting the central grey matter are subdivided according to the preferential location of the lesions: in the basal ganglia, in the thalami or both. The characteristic imaging findings are described with emphasis on the differential diagnosis and clinical context.

Keywords Basal ganglia · Thalamus · Bilateral lesions · Symmetric lesions · MRI · CT

Introduction

The basal ganglia and thalami are paired grey matter structures, embedded deep in the brain hemispheres and are often referred to as the “central grey matter”. They are involved in the regulation of autonomic, motor,

sensory, limbic and endocrine functions, and consequently, their metabolic demand exceeds that of the cerebral cortex in the resting state. Basal ganglia pathologies typically cause movement disorders, but their role extends beyond the extrapyramidal system to memory, emotion and other cognitive functions. The thalamus is a complex

Key points

- Magnetic resonance imaging (MRI) is the modality of choice for assessment of pathology involving the deep grey matter nuclei, due to its superior contrast resolution. Nonetheless, CT has a distinct role as the reference standard for detection of calcifications.
- The basal ganglia and thalami are susceptible to injury because of the extensive metabolic activity, especially in the immature brain, due to intense neurotransmission, and therefore, pathologies often present with distinct imaging patterns, frequently in a symmetric fashion.
- A systematic approach combining imaging, clinical and demographic data is necessary when encountering lesions of the central grey matter on scans of the brain.

✉ Sofie Van Cauter
sofie.vancauter@zol.be

¹ Department of Medical Imaging, Ziekenhuis Oost-Limburg, Schiepse Bos 6, 3600 Genk, Belgium

² Department of Radiology, University Hospitals Leuven, Herestraat 39, 3000 Leuven, Belgium

³ Neuroradiology Unit, IRCCS Istituto Giannina Gaslini, Via Gerolamo Gaslini 5, 16147 Genoa, Italy

⁴ Department of Diagnostic and Interventional Radiology, University Hospital Dubrava, Avenija Gojka Šuška 6, Zagreb, Croatia

⁵ Department of Radiology, University Hospital Antwerp, Wilrijkstraat 10, 2650 Edegem, Belgium

⁶ Department of Medical Imaging, AZ KLINA, Augustijnslei 100, 2930 Brasschaat, Belgium

⁷ Department of Radiology, University of Rijeka School of Medicine, Ulica Braće Branchetta 20, 51000 Rijeka, Croatia

⁸ Department of Radiology, Medical University of South Carolina, 96 Jonathan Lucas Street, Charleston, SC 29425, USA

hub receiving subcortical sensory and motor input that projects to both the cortex and striatum. Thalamic lesions can cause chronic pain, sensory loss, amnesia, dystonia and other disorders [1].

The terminology can be confusing because of the variety of names and definitions, complex interconnections and interactions. The components of the basal ganglia and the method of naming depend on which aspect (biochemical, embryological or functional) of these complex structures is considered. For the purpose of this review, the term “basal ganglia” is used in the strictest sense (the telencephalic basal ganglia) and refers to the corpus striatum (comprising the caudate nucleus, putamen and globus pallidus). The substantia nigra and subthalamic nucleus originate from the mesencephalon and diencephalon, respectively, and are not considered a part of the basal ganglia in this review. Embryologically and functionally, the caudate nucleus and putamen form a unit, the striatum [2]. The lentiform nucleus is a descriptive collective term for both the putamen and globus pallidus, which are divided by a thin layer of white matter, the lateral medullary lamina.

The thalami, situated along the borders of the third ventricle, originate from the embryonic diencephalon and consist of grey matter nuclei but also of white matter tracts. The difference in embryological origin is also reflected in the arterial blood supply: the basal ganglia are supplied by perforating branches of the anterior cerebral artery, including Heubner’s artery, middle cerebral artery and the anterior choroidal artery, all originating from the internal carotid artery; perforating branches of the posterior cerebral artery and posterior communicating artery supply the thalami. The thalamostriate veins collect the venous drainage of both the basal ganglia and thalami, the blood then flows through the internal cerebral veins

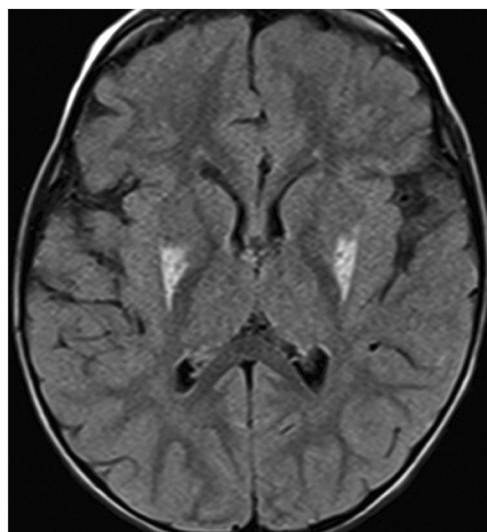


Fig. 2 Leigh syndrome. A 4-year-old boy with Leigh syndrome. Axial FLAIR image reveals bilateral symmetric hyperintensity in the dorsal putamen. There are additional symmetric brainstem lesions (not shown)

and basal veins of Rosenthal, which form the great vein of Galen, and pass into the straight sinus [3].

Magnetic resonance imaging (MRI) is the modality of choice for assessment of pathology involving the deep grey matter nuclei, due to its superior contrast resolution compared to computed tomography (CT). Nonetheless, CT has a distinct role as the reference standard for detection of calcification, while susceptibility-weighted magnetic resonance imaging (SW-MRI) has slightly lower accuracy [4]. However, SW-MRI, and especially the phase information of this sequence, is a valid alternative for CT in the detection of calcifications, when CT is not available or only one examination is possible.

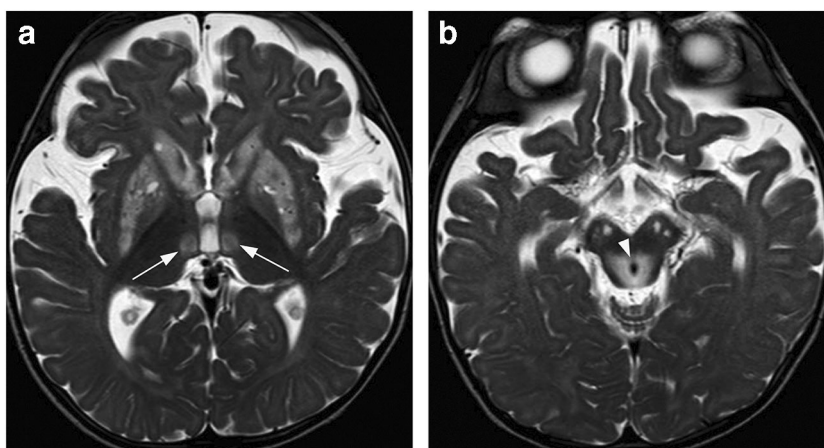


Fig. 1 Leigh syndrome. A 6-year-old girl with Leigh syndrome in the acute phase. **a** Axial T2-weighted image at the basal ganglia level shows bilateral symmetric hyperintensity of the striatum and focal medial thalamic lesions (arrows). There is slightly increased signal intensity of globi

pallidi. **b** Axial T2-weighted image through the midbrain demonstrates hyperintensity of the tectum, periaqueductal grey matter (arrowhead) and bilateral substantia nigra. On MR spectroscopy with echo time of 144 ms, lactate was detected as an inverted double peak on 1.33 ppm (not shown)

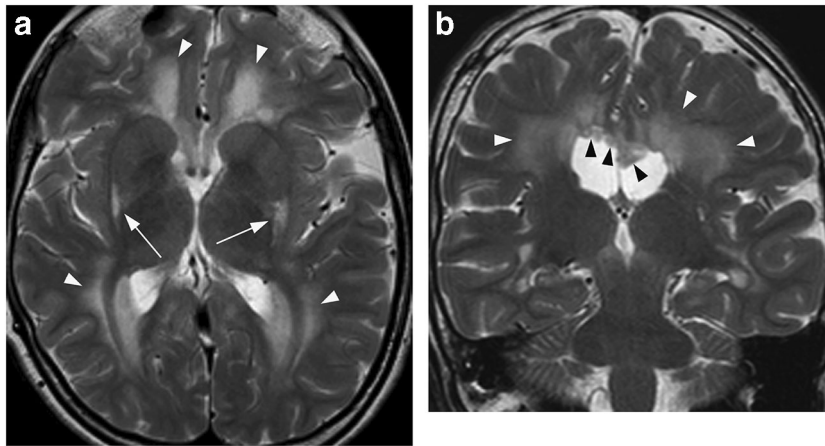


Fig. 3 Glutaric aciduria type 1. A 14-year-old male with glutaric aciduria type 1. **a** On axial T2-weighted image, there is bilateral symmetric hyperintensity of the posterior lentiform nuclei (arrows). **b** Confluent fronto-temporo-parietal areas of high signal intensity (white arrowheads)

are better seen on the coronal T2-weighted image, which also demonstrates subependymal nodules (black arrowheads) along the superior aspect of the frontal horns

On CT, the basal ganglia and thalamus are normally isodense to the cortex. On T2-weighted and FLAIR images, the thalamus, putamen and caudate nucleus have intensities similar to the cortex, whereas the globus pallidus appears slightly hypointense, due to iron depositions. The higher T1 signal intensity of globus pallidus is mostly due to the higher myelin content but is also caused by calcium deposition. T1 signal intensity increases with concentrations of calcium of up to 30%, but then decreases with higher concentrations [5]. The internal medullary lamina, which divides the globus pallidus in internal and external parts, is not well visualised on currently used clinical MRI scanners (with field strengths 1.5–3 T). The basal ganglia and thalami do not enhance after contrast administration and do not show alteration of diffusivity on apparent diffusion

coefficient (ADC) maps. On SW-MRI, the globus pallidus shows a more pronounced hypointensity due to calcium and iron depositions. Increasing mineralisation with age and volume loss occur in all deep grey matter structures [6].

Overview of pathology

It would be an impossible task to include all pathological processes that can affect the central grey matter in this pictorial review. As the goal was to provide an instructive overview of the characteristic imaging patterns that we believe are useful in daily clinical practice, disorders with atypical appearances and those that are exceedingly rare have been excluded, along with some of the commonly

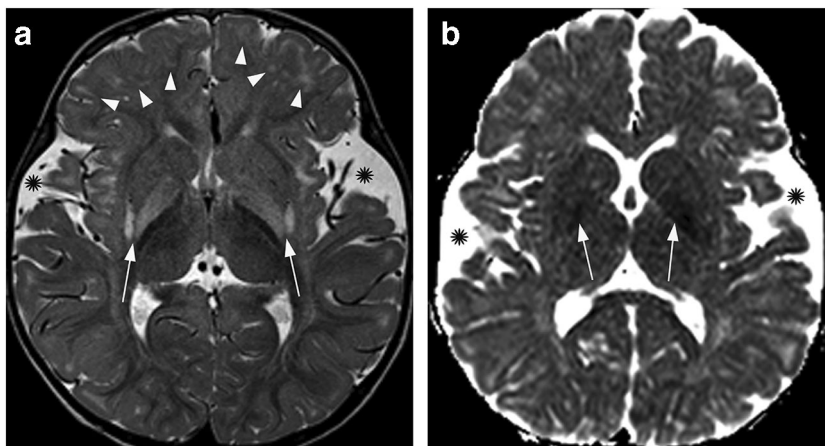
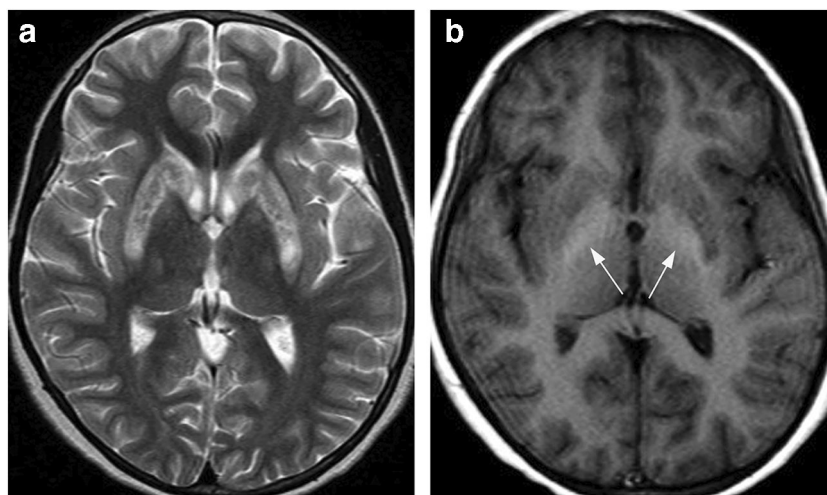


Fig. 4 Glutaric aciduria type 1. A 20-month-old boy with glutaric aciduria type 1. **a** Axial T2-weighted image shows subcortical areas of delayed myelination, primarily frontal (arrowheads), along with more prominent bilateral symmetric hyperintensity of the globi pallidi and

posterior putamina (arrows). **b** ADC map reveals lower signal intensity of the lentiform nuclei (arrows), consistent with decreased diffusivity. There are also bilateral wide opercula/enlarged Sylvian fissures (*), best seen on the left side in **a**

Fig. 5 Wilson disease. A 6-year-old girl with headache, tremor and liver failure. **a** Axial T2-weighted image reveals bilateral symmetric hyperintensity of the putamen and caudate nucleus, more prominent peripherally. There is a subtle increase in signal intensity in bilateral globus pallidus and lateral thalamus. **b** Axial T1-weighted image at a slightly lower level shows bilateral mild decrease in signal intensity of the putamen and hyperintensity of globus pallidus (arrows)



encountered entities, primarily lacunar infarcts and metastatic neoplasms. Based on the predominant location of lesions on imaging studies (basal ganglia, thalamus or both), the diseases have been classified into three groups, which were further subdivided according to the type of pathology (primarily inherited metabolic/genetic, acquired metabolic/toxic, inflammatory and infectious, vascular and ischaemic, neoplastic). A summary figure at the end of the paper consists of multiple cropped axial images showing the most characteristic disease patterns involving the basal ganglia and thalami. While this format is simplified and far from perfect, in our opinion, it does allow for a systematic overview of the pertinent imaging findings.

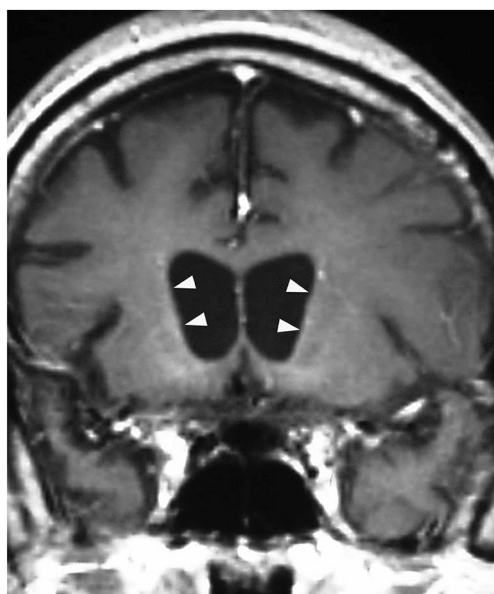


Fig. 6 Huntington disease. A 36-year-old male patient with a family history of Huntington disease and choreoathetosis. There is severe atrophy of the caudate nucleus head on coronal post-contrast T1-weighted image with frontal horns of the lateral ventricles demonstrating “boxed-out” appearance (arrowheads). There is also atrophy of the frontal lobes

Pathology predominantly affecting the basal ganglia

Inherited metabolic/genetic

Subacute necrotising encephalopathy (Leigh syndrome)

Subacute necrotising encephalopathy (Leigh syndrome) is a progressive mitochondrial neurodegenerative disorder with a severe prognosis that presents in infancy or early childhood. This most common mitochondrial disease is genetically heterogeneous with mutations identified in over 75 genes. Affected infants present with feeding difficulties, psychomotor retardation and ataxia, most commonly during or after a

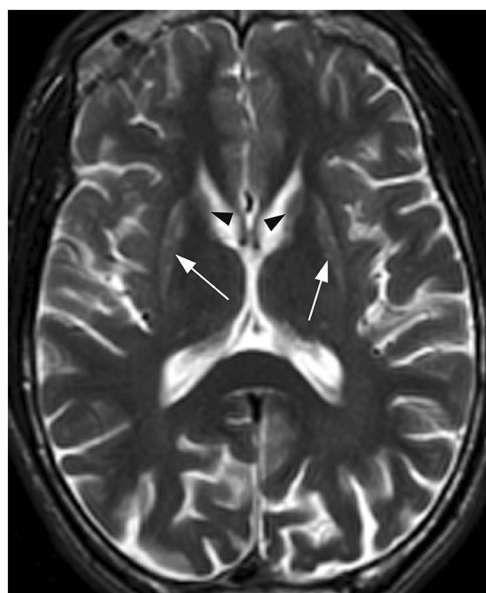
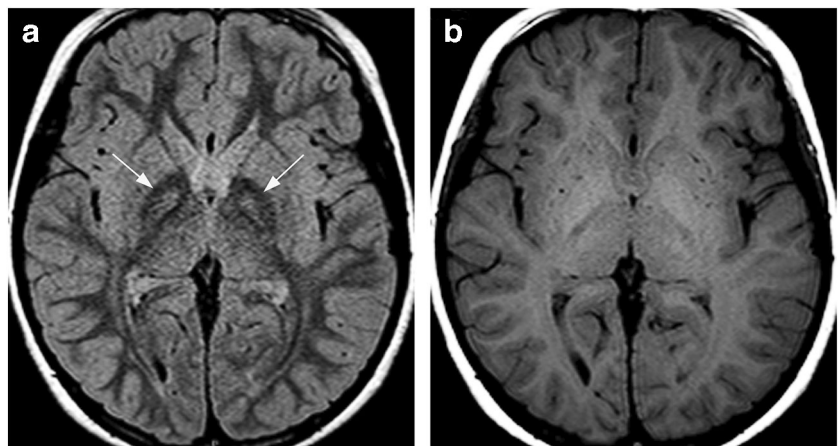


Fig. 7 Huntington disease. A 17-year-old patient with a juvenile form of the disease. Axial T2-weighted image shows a reduced size of bilateral caudate head (arrowheads) and putamen (arrows). The associated hyperintensity is more prominent in the putamina

Fig. 8 PKAN. An 8-year-old boy with pantothenate kinase-associated neurodegeneration. **a** Bilateral symmetric hyperintense foci in the anteromedial globus pallidus are surrounded by lower signal intensity on FLAIR image (arrows), giving the typical “eye of the tiger” sign. **b** There is a corresponding mild hyperintense signal on T1-weighted image



period of metabolic stress. Elevated lactate levels (which may also be found on brain MR spectroscopy) in the arterial blood and/or CSF is a clue to the diagnosis.

MRI shows bilateral symmetric areas of hyperintense T2 signal in the putamen (which are characteristic but not always present) and/or brainstem (midbrain and medulla, including periaqueductal grey matter) (Figs. 1, 2 and 59) with decreased diffusivity in acute phases due to cytotoxic oedema. The subthalamic nucleus, substantia nigra, caudate nucleus, globus pallidus, dorsomedial thalamus and cerebellar dentate nuclei may also be involved [7, 8]. These MRI signal alterations reflect the spongiform changes and vacuolation in the affected brain structures.

Similar findings can be seen in other mitochondrial disorders, Wilson disease, hypoxic–ischaemic encephalopathy and

toxic causes. However, bilateral symmetric T2 hyperintensity involving multiple brainstem structures along with basal ganglia in a child with neurological problems should prompt consideration of Leigh syndrome.

Glutaric aciduria type 1

Glutaric aciduria type 1 is an autosomal recessive metabolic disorder, usually presenting in infants. The disease frequently starts abruptly with focal or generalised seizures following an infection or immunisation. Symptoms then evolve to psychomotor regression and dystonia or choreoathetoid movements. Macrocephaly is usually present at birth.



Fig. 9 Carbon monoxide (CO) poisoning. A 37-year-old fire victim with headache, nausea and vomiting. Axial CT shows bilateral focal hypodense lesions within globus pallidus (arrows)

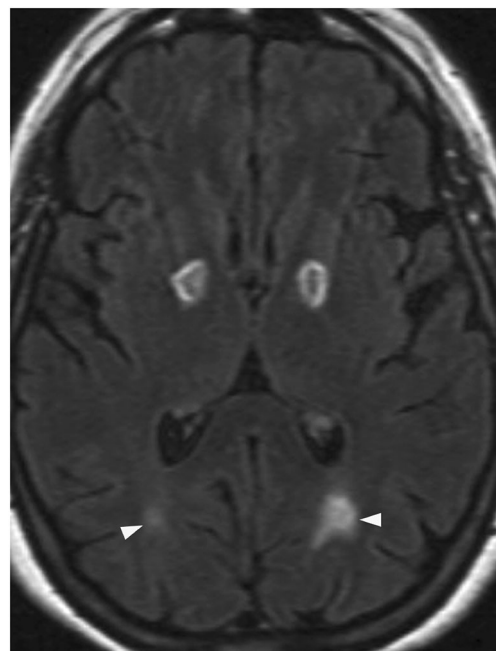


Fig. 10 CO poisoning. Acute CO intoxication from malfunctioning heater. Axial FLAIR image shows hyperintense oval lesions in bilateral globus pallidus with central hypointensity (suggestive of small haemorrhage). There are also white matter hyperintensities (arrowheads), more extensive in the centrum semiovale (not shown)

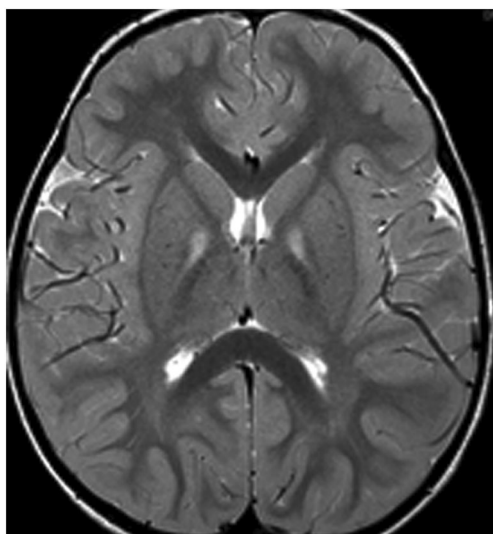


Fig. 11 Kernicterus. A 4-year-old boy with chronic bilirubin encephalopathy. T2-weighted image reveals symmetric hyperintensity of the globi pallidi. Symmetric increased signal was also present at the dentate and subthalamic nuclei (not shown)

MRI shows a characteristic frontotemporal atrophy with enlarged Sylvian fissures (“bat wing” dilatation), subdural hygromas and delayed myelination (Figs. 3, 4 and 59). There is increased T2 signal in the caudate nucleus and the putamen, with swelling and reduced diffusivity in the acute phases, evolving to atrophy over time [9, 10]. Confluent white matter signal alterations and subependymal nodules along the lateral ventricles (Fig. 3b) are present in some cases. Due to

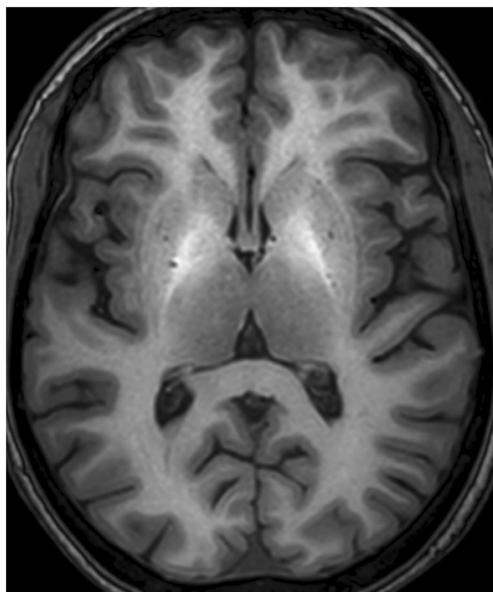


Fig. 12 Chronic liver failure/Mn toxicity. A 49-year-old female with known hepatic cirrhosis presenting with new onset tremor. On axial T1-weighted image, there is symmetric hyperintensity of the globi pallidi. The increased signal is extending to the tegmentum of the midbrain and dentate nuclei (not shown). There is also increased T2 signal intensity in the internal capsules (not shown)

the presence of subdural hygromas, this condition may be a mimicker of non-accidental traumatic injury. However, the characteristic associated abnormalities should alert the radiologist to the possibility of a metabolic disease [11].

Wilson disease

Wilson disease (WD) or hepatolenticular degeneration is an autosomal recessive condition caused by ATP7B gene mutations that result in errors of copper transport and accumulation in the liver and deposition in other sites, including the brain. The diagnosis is typically established by the presence of low ceruloplasmin levels and Kayser–Fleischer ring around the iris, supported by high urine copper and confirmed by genetic testing. Extrapyrarnidal and behavioural symptoms typically begin in the second or third decade of life; however, it may manifest in older people and in young children [12–14]. On T2-weighted and FLAIR images, there is bilateral symmetric deep grey matter signal alteration, commonly a concentric-laminar hyperintensity. High T2 signal in the putamen (particularly along the outer rim) is most frequently observed (Figs. 5a and 59), followed by changes of the caudate nucleus, globus pallidus, thalamus (sparing the medial portion) and brainstem. Reduced diffusivity may sometimes be present in very early phases; however, increased diffusion is more typical. Symmetric T1 hyperintensity of globus pallidus is common (Figs. 5b and 59), likely resulting from liver failure. Hyperintensity of the midbrain with sparing of red nuclei, portion of substantia nigra and superior colliculi produces the “face of the giant panda” sign, which is virtually pathognomonic for WD but present in a minority of patients.

The signal alterations regress with response to copper-chelating treatment [12–14]. Similar neuroimaging findings may be seen in Leigh disease, methanol toxicity and metabolic acidosis. However, bilateral basal ganglia with or without thalamic or brainstem lesions on MRI are highly suggestive of WD in the appropriate clinical setting.

Huntington disease

Huntington disease (HD) is an autosomal dominant neurodegenerative disease caused by a mutation (an elongation of CAG repeats, coding for glutamine) in the gene which encodes huntingtin protein. The mutant huntingtin protein aggregates in axonal terminals and causes neuronal cell death, which is most pronounced in the spiny GABA-ergic neurons of the striatum. The disease is characterised by a triad of motor, cognitive and psychiatric symptoms, showing an unrelenting progressive course over 15–20 years. An average age of onset is 40 years, though cases of HD have been diagnosed in patients ranging from 2 to 87 years. Adult-onset HD typically

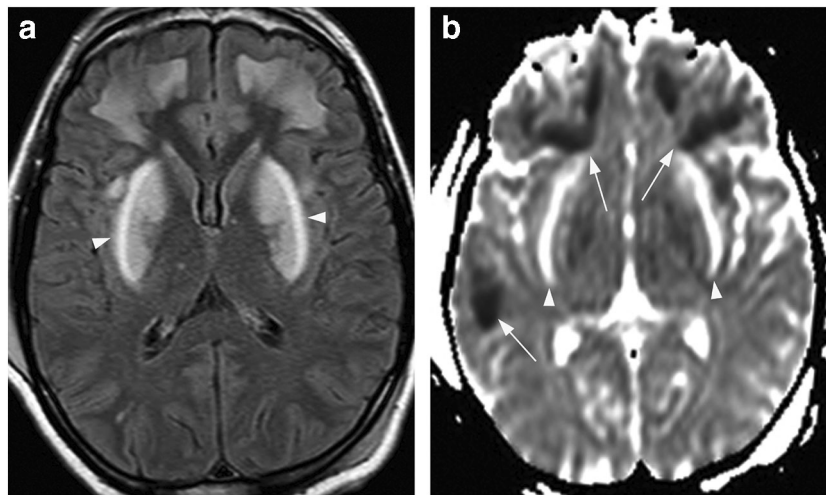


Fig. 13 Methanol poisoning. A 31-year-old man a few days after ingestion of home-made liquor. **a** Axial FLAIR image shows bilateral symmetric hyperintensity with mild swelling of the putamen and frontal white matter. The signal alteration is accentuated along the lateral putaminal

margin (arrowheads), and there are a few additional smaller hyperintense areas. **b** ADC map at a slightly lower level reveals high diffusivity of the putamina (arrowheads) and reduced diffusion of the affected white matter (arrows), predominantly frontal. Images courtesy of Claudia Godi

presents as a hyperkinetic, whereas the juvenile form as a hypokinetic motor disorder [15, 16].

The characteristic imaging finding of HD is bilateral striatal (caudate nucleus and putamen) atrophy, particularly involving the heads of the caudate nuclei. This leads to symmetric enlargement of the adjacent frontal horns with flattening of their lateral contour, giving the “boxed-out” appearance (Figs. 6 and 59). The intercaudate distance exceeds 20 mm, whereas normal values range from 10 to 14 mm. A mild associated T2 hypointensity due to iron deposition may be noted in the adult form of the disease. In the juvenile-onset HD, on the other hand, high T2 signal is frequently observed in the caudate

nucleus and putamen (Fig. 7). Diffuse cerebral atrophy with white matter volume loss, generally more pronounced in the frontal lobes, is observed in advanced stages of the disease. Even years before symptoms become overt, mutation carriers show subtle but progressive striatal and cerebral white matter atrophy, demonstrated by volumetric MRI [15, 16].

Neurodegeneration with brain iron accumulation

Neurodegeneration with brain iron accumulation (NBIA) is a group of inherited neurologic disorders characterised by abnormal accumulation of iron in the basal ganglia. The disease

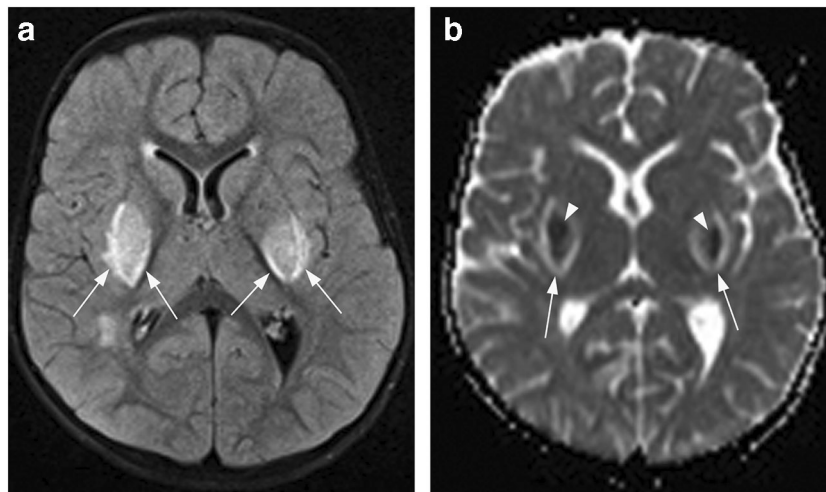
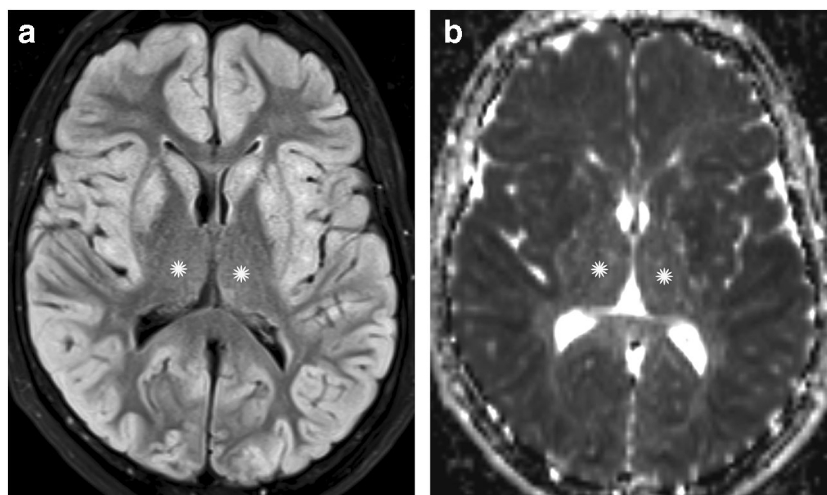


Fig. 14 Uremic encephalopathy/metabolic acidosis. A 2-year-old girl admitted with vomiting and diarrhoea for 1 week. Laboratory findings confirmed haemolytic uremic syndrome. **a** Axial FLAIR image shows bilateral symmetric swelling and increased signal of the central and posterior putamina with a more prominent hyperintense rim along the medial

and lateral margins (arrows)—the characteristic “lentiform fork” sign of uremic encephalopathy and metabolic acidosis. There is also a small white matter signal alteration. **b** The lesions show centrally reduced (arrowheads) and peripherally (along the medial and lateral arms of the putamina) increased diffusivity (arrows) on the corresponding ADC map

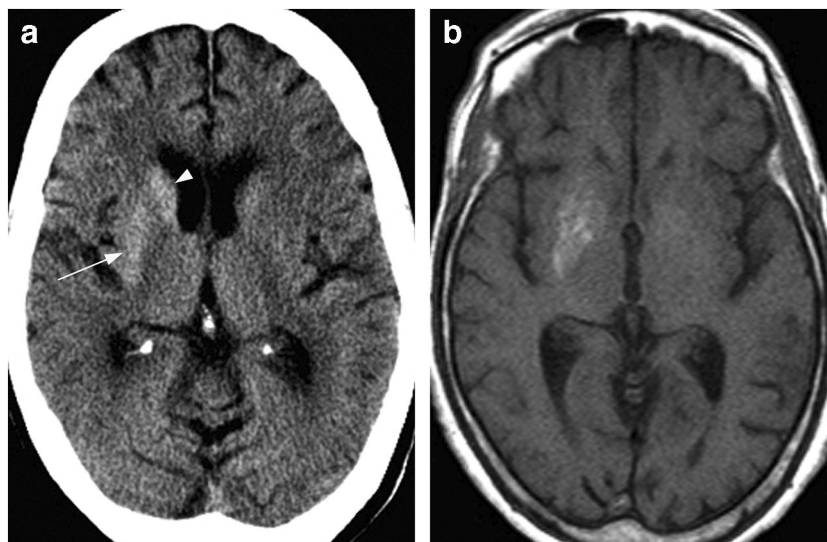
Fig. 15 Hypoglycaemia. A 77-year-old woman with diabetes mellitus following a suicide attempt with insulin overdose, resulting in hypoglycaemic coma. **a** The entire visualised cerebral cortex and striatum show bilateral hyperintense signal on axial FLAIR image. **b** Corresponding ADC map reveals reduced diffusivity of the involved grey matter. The globi pallidi and thalami (*) are spared



onset ranges from infancy to adulthood, while progression can be rapid or slow with long periods of stability. These patients present with dystonia, spasticity, parkinsonism and neuropsychiatric disturbances, along with MRI evidence of iron accumulation. Generalised cerebral and cerebellar atrophy are frequently also present [17, 18].

The pattern of iron distribution varies among these disorders, with additional features helping in the differential diagnosis. The “eye of the tiger” sign, referring to hypointense globus pallidus with a central hyperintensity on T2-weighted images (Figs. 8 and 59), is almost pathognomonic for pantothenate kinase-associated neurodegeneration (PKAN, formerly called Hallervorden–Spatz disease), the most common disorder (up to 50% of all NBIA cases). Furthermore, in mitochondrial membrane protein-associated neurodegeneration (MPAN), T2 hyperintense streaking of the medial medullary lamina between the internal and external globus pallidus is present in some patients. Finally, cystic changes and cavitations in caudate and putamen are unique to neuroferritinopathy [17, 18].

Fig. 16 Hyperglycaemia. A 79-year-old woman presenting with left-sided hemichorea-hemiballismus. Laboratory findings confirmed non-ketotic hyperglycaemia in this patient with known diabetes. **a** Axial CT image shows high attenuation of the entire right putamen (arrow) and caudate head (arrowhead) without expansion. **b** MRI demonstrates hyperintensity of the right putamen on T1-weighted imaging



Note that “eye of the tiger” sign may also be observed in Wilson disease, atypical parkinsonism or organophosphate poisoning and that it may even be a normal finding on 3 T scanners. On the other hand, the MRI imaging features may precede symptoms in patients with NBIA disorders [17].

Acquired metabolic/toxic

Carbon monoxide poisoning

Exposure to carbon monoxide (CO) is the most common cause of human poisoning around the world, caused by incomplete combustion of carbon-based fuels. Following inhalation, CO binds to haemoglobin with a 250-fold stronger affinity than oxygen, thereby reducing oxygen carrying capacity and leading to subsequent tissue hypoxia. Furthermore, CO prevents cellular uptake of oxygen, thus impairing the mitochondrial respiratory function, and promotes the formation of oxygen free radicals. Neurological symptoms of CO

poisoning can manifest not only immediately but also as late as 2 to 6 weeks after successful initial resuscitation as delayed neurological sequelae.

Bilateral focal globus pallidus lesions that are hypodense on CT and hyperintense on T2-weighted, FLAIR and DWI (Figs. 9, 10 and 59) are the very characteristic imaging findings, with the corresponding reduced diffusivity seen in the acute phase. In some patients, there is a central or peripheral area of low signal on gradient echo (GRE) T2*-weighted images/SW-MRI, occasionally accompanied with corresponding T1 hyperintensity, which is indicative of haemorrhage. In the acute phase, a patchy and/or peripheral contrast enhancement may also be seen. A very common imaging finding in the early stages is that of bilateral cerebral white matter T2 and DWI hyperintensities [19]. Involvement of the putamen, caudate nucleus, thalamus, hippocampus, cerebellum and substantia nigra may occasionally be present, typically with more subtle lesions. On the other hand, isolated abnormalities of bilateral globus pallidus lesions may occur in patients with methanol intoxication and hypoxic–ischaemic encephalopathy (HIE). Interestingly, it seems that the cerebral white matter signal alterations may actually represent the most common MRI finding of CO poisoning, instead of the characteristic lesions of the globi pallidi. The white matter lesions are also considered primarily responsible for the chronic symptoms [20].

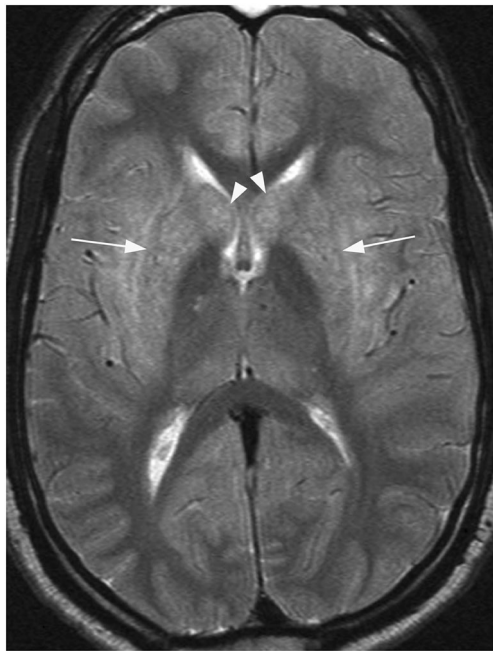


Fig. 17 Autoimmune encephalitis. A 46-year-old man with gait instability, behavioural disorder and chorea. Axial T2-weighted image demonstrates bilaterally symmetric hyperintensity and mild swelling centred at the putamen (arrows) and caudate nucleus (arrowheads). A slight symmetric increase in signal intensity is present at the cingulate gyri and posterior thalami. Anti-CV2/CRMP5 antibodies tested positive and metastatic lung cancer was eventually diagnosed

Bilirubin encephalopathy (kernicterus)

Kernicterus is the chronic form of an acquired bilirubin encephalopathy that develops over months to years in infants who survive the acute stages of bilirubin encephalopathy in the neonatal period. The neuroimaging hallmark in the chronic phase is the presence of bilateral symmetric high T2 signal in the globus pallidus (Figs. 11 and 59) and subthalamic nucleus [21]. Increased T2 signal may also be seen in the substantia nigra or in the cerebellar dentate nucleus, while T1 signal is variable. On the other hand, MRI in the acute to subacute phase characteristically demonstrates increased T1 signal of globi pallidi and subthalamic nuclei. In contrast to hypoxic–ischaemic encephalopathy, there is no T2 hyperintensity or diffusion abnormality and the thalami and putamen are of normal appearances. In term neonates, a key differential is normal myelination since the globus pallidus and subthalamic nucleus are spontaneously hyperintense on T1-weighted sequences. Of note, 3D GRE T1-weighted images at 3 T demonstrate a particular propensity for hyperintense signal in these regions with normal myelination [21].

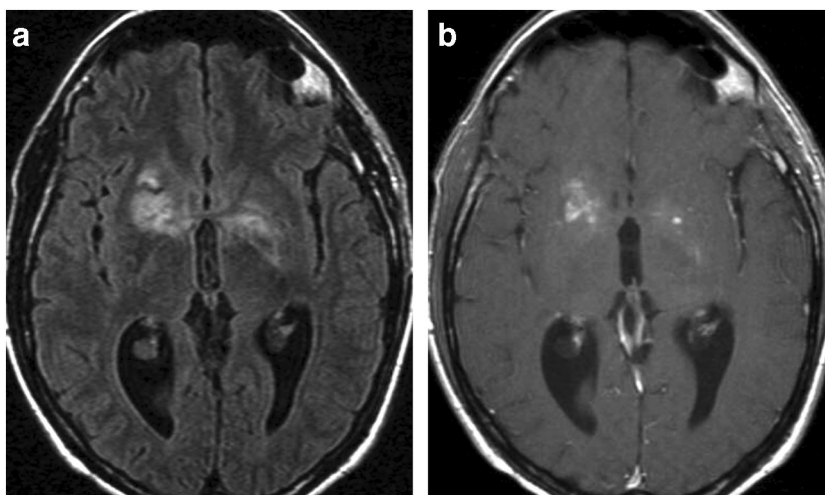
Chronic hepatic encephalopathy/manganese toxicity

Chronic hepatic encephalopathy (CHE) most commonly develops in the setting of cirrhosis and portal hypertension or portosystemic shunts. It includes a spectrum of neuropsychiatric abnormalities caused by liver dysfunction.

Bilateral symmetric globus pallidus hyperintensity on T1-weighted images is the characteristic finding in patients with CHE (Figs. 12 and 59), without corresponding abnormality on CT or T2-weighted MRI. High T1 signal may also be seen in the bilateral cerebellar dentate nucleus, substantia nigra, subthalamic nucleus and the tectum. The accumulation of manganese (Mn) is considered responsible for the T1 signal alteration. The serum concentration of Mn in cirrhotic patients is three times higher than in healthy individuals, due to inadequate liver elimination. Diffuse white matter T2 hyperintensity with preferential involvement of the corticospinal tracts and subcortical focal bright T2 lesions may also be present [22].

Restoration of liver function, such as with liver transplantation, leads to improvement of the MRI abnormalities, including T1 hyperintensities, increased T2 signal of the white matter, as well as spectroscopy findings (decreased myo-inositol levels and elevated glutamine/glutamate complex) and return to normal appearances [22]. Note that findings of Mn deposition can be seen in patients with longstanding total parenteral nutrition, Crohn's disease and long-term use of proton pump inhibitors in the treatment of gastric ulcers.

Fig. 18 Cryptococcosis. HIV-positive patient with headaches, nausea and vomiting. **a** Axial FLAIR image shows asymmetric patchy hyperintense lesions in bilateral basal ganglia. **b** There are focal areas of enhancement within these lesions on corresponding post-contrast T1-weighted image



Gadolinium deposition

The symmetric T1 hyperintensity of the globus pallidus, along with cerebellar dentate nucleus, is also commonly seen with deposition of gadolinium (Gd) following multiple contrast-enhanced MRI scans, primarily with linear gadolinium-based contrast agents (GBCA) [23, 24]. This phenomenon was first reported in 2014 and there are currently no known neurologic, neuropsychological or other clinical consequences resulting from Gd deposition. The MRI appearances may not be distinguishable from those with chronic hepatic encephalopathy or other causes of Mn accumulation.

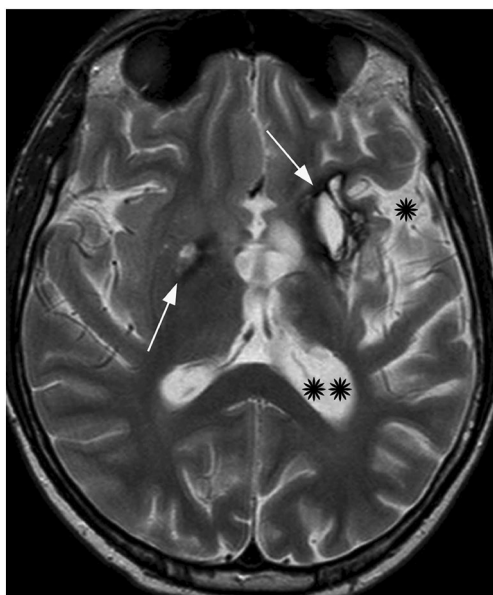


Fig. 19 Germinoma. A 14-year-old boy with cognitive and behavioural changes, headaches and progressively worsening weakness of the right arm and leg. Axial T2-weighted image shows left greater than right hyperintense lesions in the basal ganglia with prominent peripheral hypointensity (arrows). There is also left hemiatrophy with widened Sylvian fissure (*) and atrium of the lateral ventricle (**). Courtesy of Andrea Rossi

Methanol poisoning

Methanol intoxication usually occurs after oral ingestion of industrial liquids or consumption of contaminated alcoholic beverages, often occurring in mass poisonings. The most striking acute symptoms after ingestion are visual disturbances. Other symptoms are delayed up to 24 h, as methanol is metabolised by alcohol dehydrogenase to formic acid in the liver, causing severe metabolic acidosis. The mainstay of treatment is intravenous administration of ethanol, due to its higher affinity for alcohol dehydrogenase. Methanol intoxication has high mortality and leads to long-term visual sequelae and severe brain damage in survivors [25, 26].

Characteristic haemorrhagic or non-haemorrhagic bilateral symmetric lesions of the putamen are seen 24 to 36 h after methanol ingestion. The putamina are hypodense on CT and hyperintense on T2-weighted MR images (Figs. 13 and 59), commonly with T1 hyperintensity reflecting haemorrhage. Reduced diffusivity is found in the acute phase and there may be (usually peripheral) contrast enhancement. The caudate nuclei and globi pallidi may also be involved, as well as the cortex [25, 26]. Bilateral putaminal haemorrhage, especially with associated frontal and insular white matter lesions (Figs. 13 and 59), is almost pathognomonic for acute methanol poisoning, while isolated symmetric involvement of putamen (and caudate nucleus) may be seen in patients with uremic encephalopathy and other metabolic acidoses.

Uremic encephalopathy and metabolic acidosis

Uremic encephalopathy is a rare complication of end-stage renal failure with intracranial accumulation of uremic toxins.

In these patients, MRI frequently shows bilateral symmetric swelling of the putamina and globi pallidi with hyperintensity on T2-weighted and FLAIR images. Additionally, there is a rim of even brighter signal intensity that extends from the posterior aspect of the putamen laterally

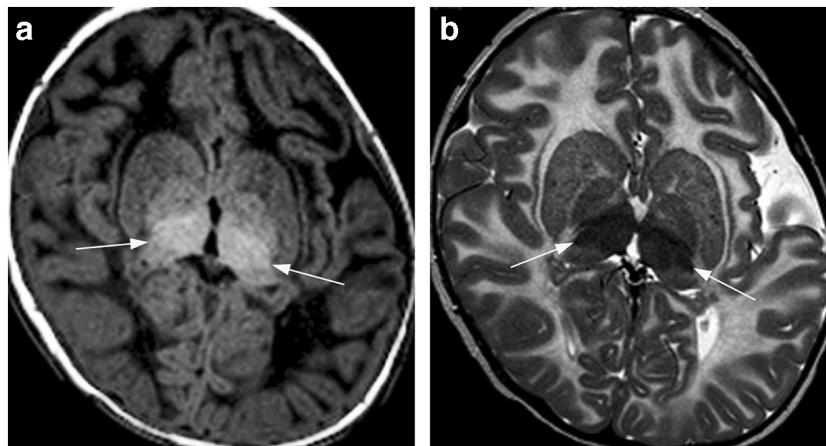


Fig. 20 Lysosomal storage disorders—GM1 and GM2 gangliosidosis. A 17-month-old girl with the infantile form of gangliosidosis type 1. **a** There is bilateral hyperintensity of the thalami (arrows) on T1-weighted image. **b** T2-weighted image shows corresponding low signal intensity of the

thalami (arrows). There is also diffuse hypomyelination of the supratentorial white matter (with low T1 and high T2 signal intensity) and plagiocephaly

along the external capsule, while its medial arm spreads along the internal capsule and then bifurcates anteriorly into two slightly less hyperintense branches, corresponding to the external and internal medullary laminae (Fig. 14a and 59). The lentiform nucleus is thus delineated and divided into three sections—putamen, globus pallidus interna and globus pallidus externa, resembling a fork. This characteristic imaging appearance has been hence named “lentiform fork” sign [27]. ADC maps demonstrate peripheral bright signal of increased diffusivity along the “fork” with variable appearances centrally, frequently containing dark areas of reduced diffusivity (Fig. 14b). There is no associated contrast enhancement

and the caudate nucleus may also be involved. Symptoms and imaging findings improve with renal transplantation or renal dialysis. The lentiform fork sign may be found in other conditions with metabolic acidosis and in patients with diabetes without acidosis such as with metformin-associated encephalopathy [28].

Hypoglycaemia

A sudden decrease in the serum glucose level (such as in diabetic patients or with exogenous administration of insulin) may cause coma, but most patients regain consciousness after glucose infusion. Hypoglycaemic encephalopathy develops in extended and severe hypoglycaemia and can cause irreversible brain damage, resulting in a persistent vegetative state or death.

Three patterns of abnormalities may be present on MRI: selective white matter involvement, selective grey matter involvement or both. Additionally, the lesions can be diffuse or more focal, bilateral, asymmetric or even unilateral. The abnormalities have been reported in the cerebral cortex, basal ganglia, hippocampi, subcortical white matter, posterior limb of the internal capsule, and splenium of the corpus callosum with sparing of the thalamus, cerebellum and brainstem. The earliest change in severe hypoglycaemia is reduced diffusivity, due to cell swelling and cytotoxic oedema. The extent of the abnormalities depends on severity and duration of hypoglycaemia with diffuse and extensive DWI lesions predicting a poor neurologic outcome. Sparing of the thalamus allows differentiation from hypoxia, in which the thalami are most commonly affected (Figs. 15 and 59) [29].

Transient hypoglycaemia is relatively common in neonates during the peripartum. When abnormalities are present on

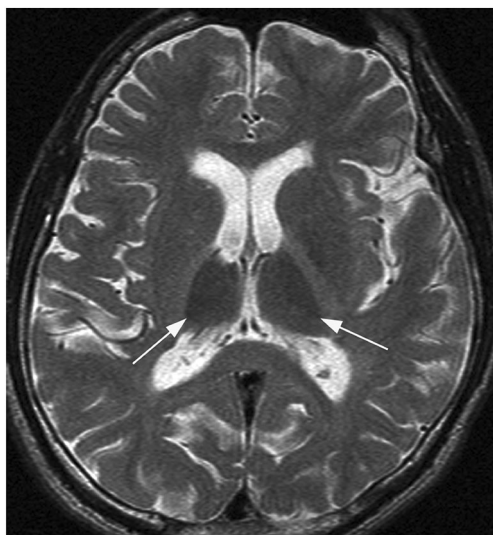
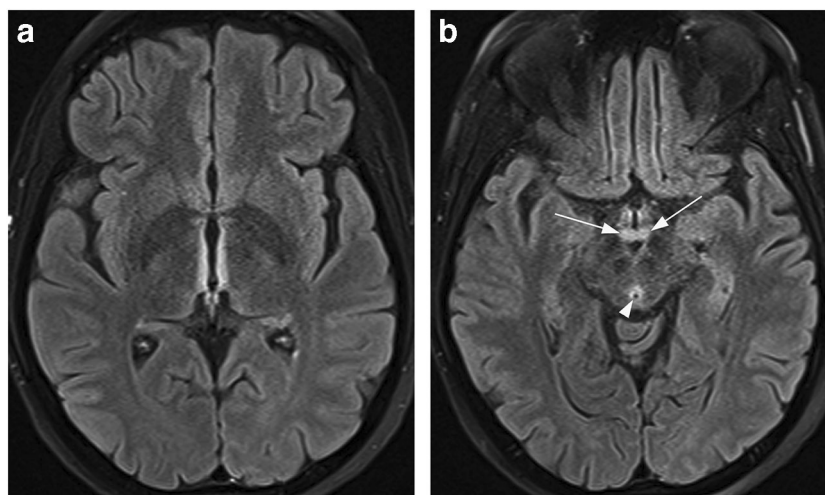


Fig. 21 Toluene toxicity. A 21-year-old male with organic solvent abuse for 5 years. Axial T2-weighted image shows a prominent hypointensity of both thalami (arrows). Also seen is mildly decreased signal intensity of the left globus pallidus, generalised atrophy and diffusely increased signal of the white matter with loss of grey–white matter distinction. Case courtesy of Dr. Chee Kok Yoon, Radiopaedia.org, rID: 17082

Fig. 22 Wernicke encephalopathy (WE). A 38-year-old female with history of gastric bypass, presenting with somnolence and ophthalmoplegia after 3 days of vomiting and Wernicke encephalopathy. **a, b** Axial FLAIR images demonstrate hyperintensity involving bilateral medial thalami along the third ventricle, periaqueductal grey matter (arrowhead) in the mid-brain and the mammillary bodies (arrows)



imaging, there is characteristic bilateral involvement of the white and grey matter in the parietal and occipital lobes [30].

Hyperglycaemia

The pathological process known as non-ketotic hyperglycaemia with hemichorea-hemiballismus, which describes the clinical presentation, is characteristically found in patients with (poorly controlled) diabetes mellitus, more commonly in elderly females of Asian descent. However, the sudden onset of choreiform and ballistic movements of unilateral extremities may occasionally be the initial and only manifestation of type 1 diabetes in younger people, including adolescents [29].

CT demonstrates hyperdensity of the putamen, typically contralateral to the side of the patient's symptoms. This finding is, in contrast to essentially all other metabolic or toxic disorders, characteristically and in the vast majority of cases unilateral (and usually strikingly asymmetric in rare bilateral cases). There is corresponding abnormal T1 hyperintensity of the putamen on MRI, with or without

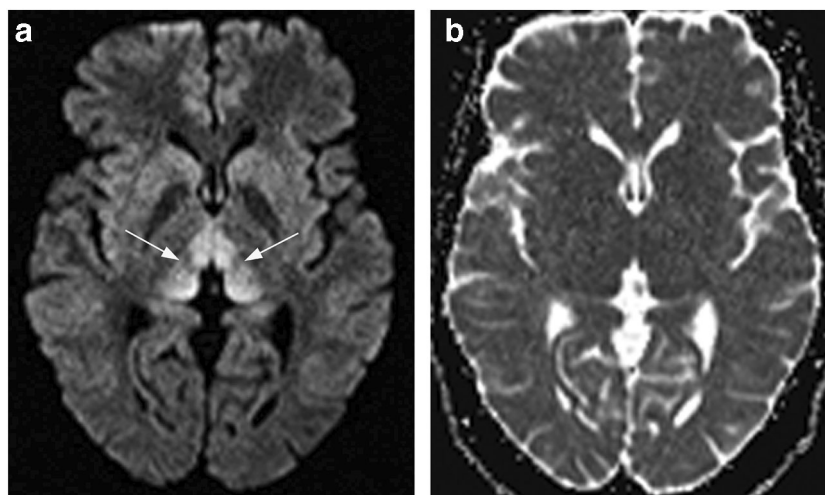
involvement of the caudate nucleus and globus pallidus (Figs. 16 and 59). The affected areas demonstrate variable appearance on DWI, ADC, GRE T2*-weighted (or SW-MRI) and T2-weighted images. Imaging features are usually reversible, though they lag behind clinical improvement [29, 31, 32].

Inflammatory/infectious

Autoimmune encephalitis

Autoimmune encephalitis refers to a group of immune-mediated pathologies directed to several neuronal antigens, with or without an underlying malignancy. In the first case, the antibodies are usually against intracellular antigens, while in the second case, the antibodies are against surface receptors. Regardless of aetiology or antibody profile, there is a clear predilection for antigens in the limbic system. However, entities targeting antigens in the basal ganglia have also been described [33]. Clinical presentation is generally gradual,

Fig. 23 WE. A 49-year-old male with WE due to chronic alcoholism. **a** Axial DWI shows the characteristic bilateral symmetric hyperintensity along the dorsomedial thalami (arrows). **b** There is no diffusion abnormality on the corresponding ADC map



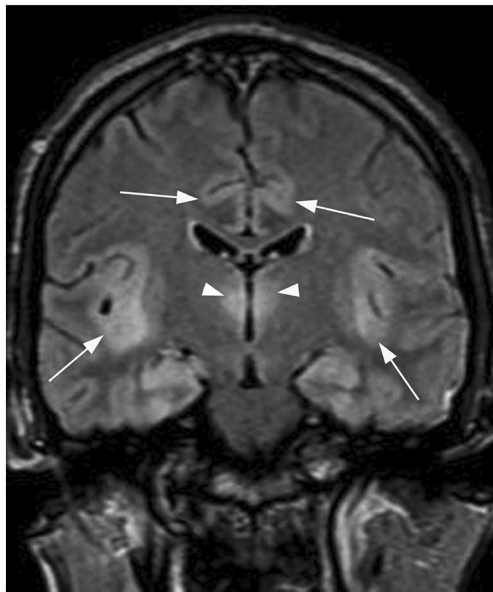


Fig. 24 Acute hyperammonaemic encephalopathy. A 26-year-old man was found unconscious, with upper motor neuron signs, clonus and drowsiness on exam. Biochemical exam demonstrated hyperammonaemia due to valproate toxicity. Coronal FLAIR image reveals bilateral symmetric high signal intensity involving the cortex of insula and cingulate (arrows), thalami (arrowheads) and hippocampi. Courtesy of Sumeet Kumar

evolving over a few weeks and psychiatric symptoms are common, along with movement disorders and seizures.

Anti-CV2/CRMP5 (collapsin response mediator protein 5) encephalitis, which is frequently associated with lung cancer and thymoma, typically presents with chorea and behavioural disorders. In some patients, MRI shows a prominent hyperintensity of the striatum (putamen and caudate nucleus)

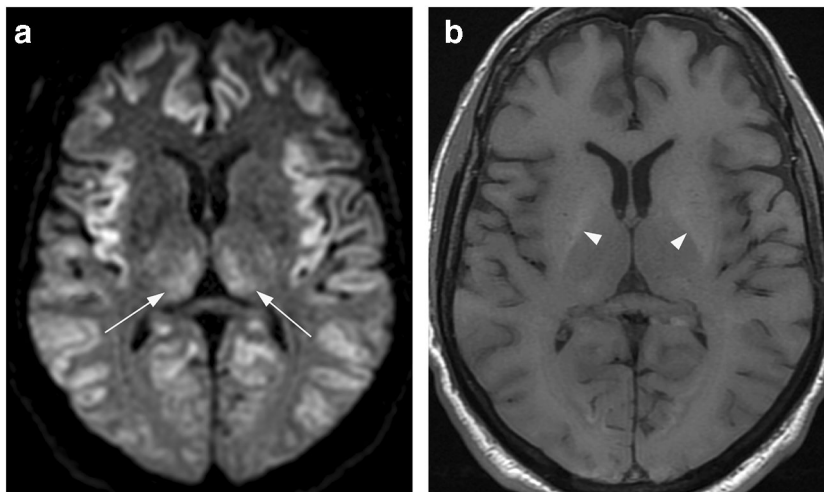


Fig. 25 Acute hyperammonaemic encephalopathy. A 60-year-old alcoholic patient presenting with confusion and drowsiness due to decompensated liver cirrhosis. **a** There is bilateral symmetric cortical and thalamic (arrows) hyperintensity on DWI. The cortical signal alteration is most prominent in the cingulate gyri and insulae, while the occipital lobes

and caudate on T2-weighted and FLAIR images (Figs. 17 and 59), without diffusion abnormality, which helps in differentiation from Creutzfeldt–Jakob disease. Anti-CV2 encephalitis is a diagnosis of exclusion and the differential diagnosis should include various intoxications and metabolic acidosis [33–35].

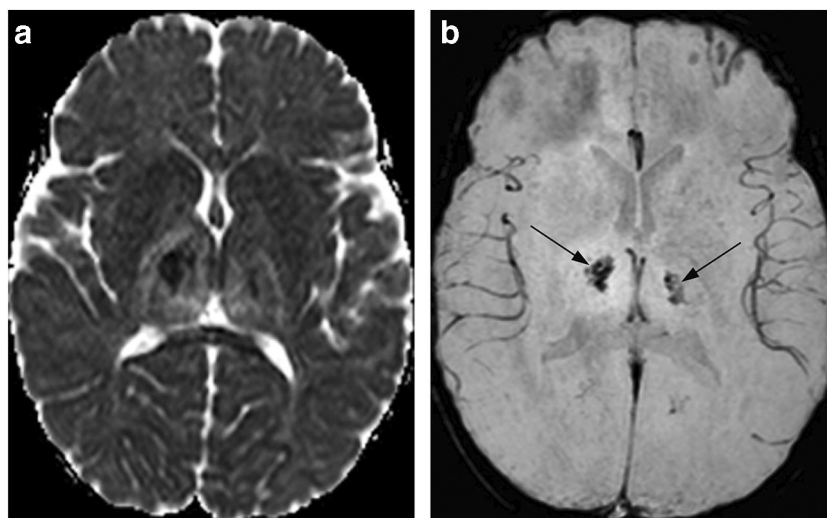
Cryptococcosis

Manifestations of cryptococcal CNS infection are variable and include gelatinous pseudocysts, granulomas (cryptococcomas) and meningoencephalitis. Imaging studies, especially CT, may be normal or show ventriculomegaly only. The organisms extend from the basal cisterns into the brain via the perivascular spaces, resulting in cyst-like structures filled with the fungi and their gelatinous capsular material. These characteristic gelatinous pseudocysts are well-demarcated lesions located preferentially in the basal ganglia, ranging from a few millimetres to several centimetres in size [36, 37].

The pseudocysts are non-enhancing, CSF-like on CT as well as on T2- and T1-weighted MRI, however hyperintense on FLAIR images (Figs. 18a and 59). The finding of multiple cysts/dilated perivascular spaces in an immunosuppressed patient is highly suspicious for cryptococcal infection. Cryptococcomas, on the other hand, are T2 hyperintense intra-axial nodules usually located in the deep grey matter that show mild contrast enhancement (Fig. 18b) and may have surrounding oedema [36, 37]. While gelatinous pseudocyst and cryptococcomas are the most common findings in HIV-infected patients, radiological meningitis is the predominant MRI abnormality of cryptococcal meningoencephalitis in HIV-negative individuals [38].

and basal ganglia are spared. The perirolandic cortex is also spared (not shown). **b** Corresponding T1-weighted image shows bilateral high signal of globus pallidus (arrowheads), indicative of chronic liver failure. Case courtesy of Dr. Andrew Dixon, Radiopaedia.org, rID: 39037

Fig. 26 Acute necrotising encephalitis (ANE). A 2-year-old girl with drowsiness following respiratory viral infection. **a** Axial ADC map shows swelling of both thalami with heterogeneous diffusivity—primarily central low and peripheral high signal. **b** The central areas show signal loss (arrows) on the corresponding GRE T2* image, consistent with haemorrhage. Normal appearance of the internal cerebral veins, without signs of thrombosis



Vascular/ischaemic

HIE frequently involves the basal ganglia as well as the thalami and is therefore discussed in the “[Pathology involving both the basal ganglia and thalami](#)” section.

Neoplastic

Germinoma

Intracranial germinomas predominantly arise in midline supratentorial locations, primarily the suprasellar and pineal regions; however, about 6–10% occur in off-midline structures, usually the basal ganglia (sometimes the thalamus and very rarely the posterior fossa structures). Basal ganglia

germinomas are notoriously difficult to diagnose because of the non-specific clinical presentation and subtle abnormalities on initial imaging studies. The lesions may be unilateral or bilateral and show only a mild hyperdensity on CT, along with a slight hyperintensity on T1- and T2-weighted MR images, without mass effect or enhancement. If such subtle findings are bilateral, they may be especially hard to notice. SW-MRI (or GRE T2* images) are particularly helpful, showing the neoplasms as much more obvious hypointensities in the globus pallidus and putamen. On the other hand, germinomas may be accompanied with cystic change, calcification or haemorrhage and even a prominent mass effect. Ipsilateral cerebral and/or brain stem hemiatrophy (Figs. 19 and 59), representing Wallerian degeneration, occurs in later stages with unilateral lesions [39, 40].

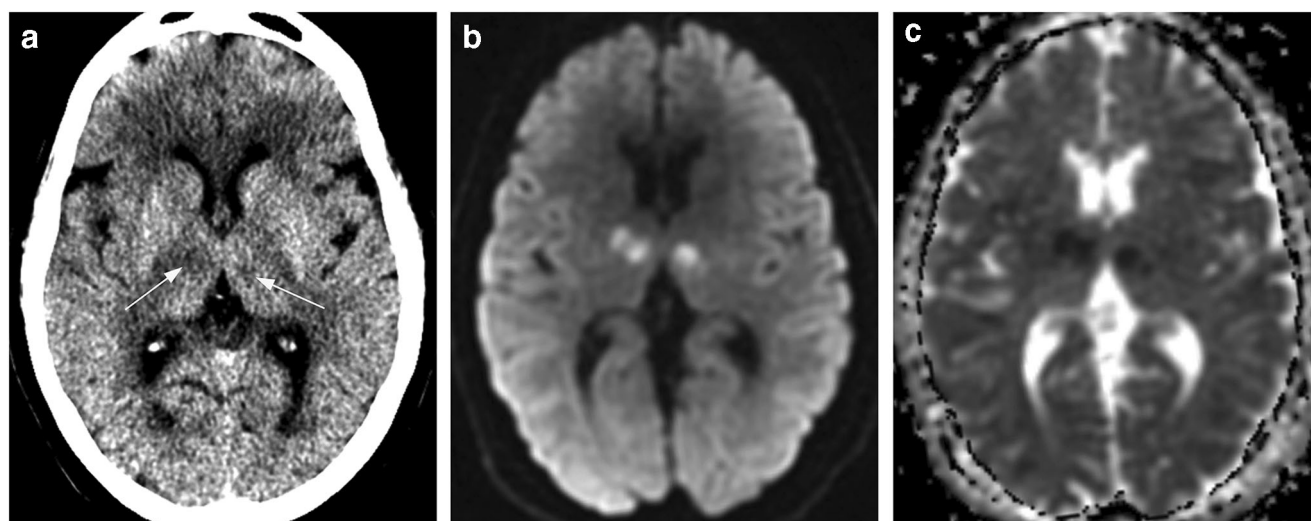


Fig. 27 Artery of Percheron infarction. A 69-year-old female patient found unconscious. **a** Axial non-enhanced CT image shows subtle hypodense lesions (arrows) in both thalami. The lesions are bright on DWI (**b**) and dark on ADC map (**c**), consistent with reduced diffusivity of acute infarctions

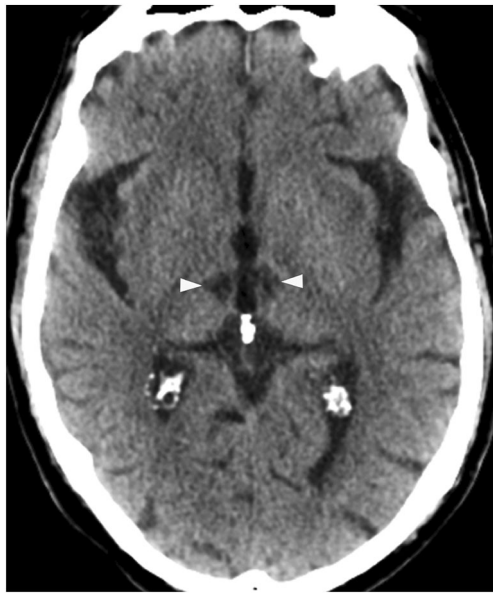


Fig. 28 Artery of Percheron infarction. Well-defined bilateral CSF-like hypodense lesions at centromedial thalami (arrowheads) represent chronic infarctions

Pathology predominantly affecting the thalami

Inherited metabolic/genetic

Lysosomal storage disorders

Gangliosidoses are a group of recessively inherited storage disorders caused by lysosomal enzyme deficiencies. Both GM1 and

GM2 (also known as Tay–Sachs and Sandhoff diseases) are classified into three types: infantile, juvenile and adult chronic. The infantile forms are most common and most severe. Patients present with rapidly evolving motor weakness, developmental delay, deafness and blindness in the first 6 months of life, often with death by 1–3 years of age. The juvenile and adult chronic forms have a different clinical presentation with motor disturbances and intellectual disabilities [41]. Neuroimaging in patients with infantile gangliosidoses is similar in GM1 and GM2 subtypes. Symmetrically hyperdense thalami on CT with corresponding increased T1 and low T2 signal (Figs. 20 and 59) are characteristic. Other features include mild T2 hyperintensity of the striatum as well as diffuse hypomyelination with sparing of the corpus callosum. The juvenile and adult forms mostly present with cerebellar atrophy.

Other lysosomal storage disorders can also show bilateral thalamic CT hyperdensity and T2 hypointensity on MRI, primarily Krabbe disease and neuronal ceroid lipofuscinosis [42–45]. On the other hand, “pulvinar sign” representing unilateral or bilateral T1 hyperintensity of the thalamic pulvinar was initially thought to be a common and pathognomonic sign of Fabry disease (FD), but due to its low incidence (in around 3% of patients) and low specificity, it is no longer considered a characteristic imaging finding of FD [46].

Acquired metabolic/toxic

Toluene toxicity/solvent abuse

Toluene (methylbenzene) is generally the main and most toxic ingredient of industrial solvents as well as many household

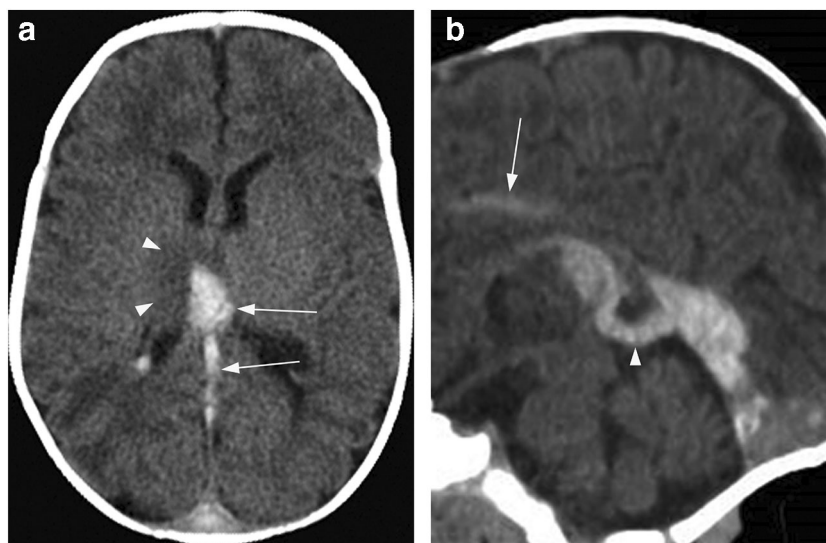
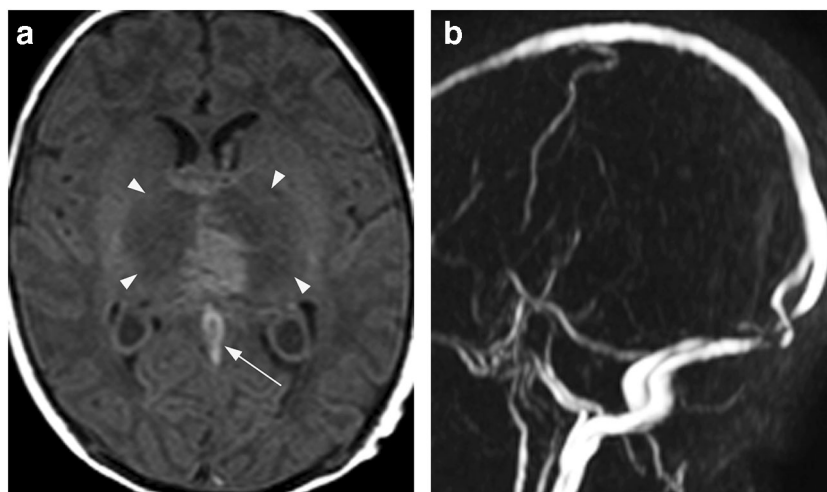


Fig. 29 Deep cerebral venous thrombosis (DCVT). A 6-month-old boy with loss of consciousness. **a** Non-enhanced axial CT image demonstrates right greater than left bithalamic hyperdense lesion consistent with blood clot. There is mild mass effect and surrounding low attenuation (arrowheads) in the right thalamus. The blood clot appears contiguous

with the hyperdensity (arrows) extending into the vein of Galen. **b** Reformatted midsagittal CT image confirms DCVT by depicting the prominent hyperdensity of the internal cerebral veins, vein of Galen (arrowhead) and straight sinus, as well as the inferior sagittal sinus (arrow)

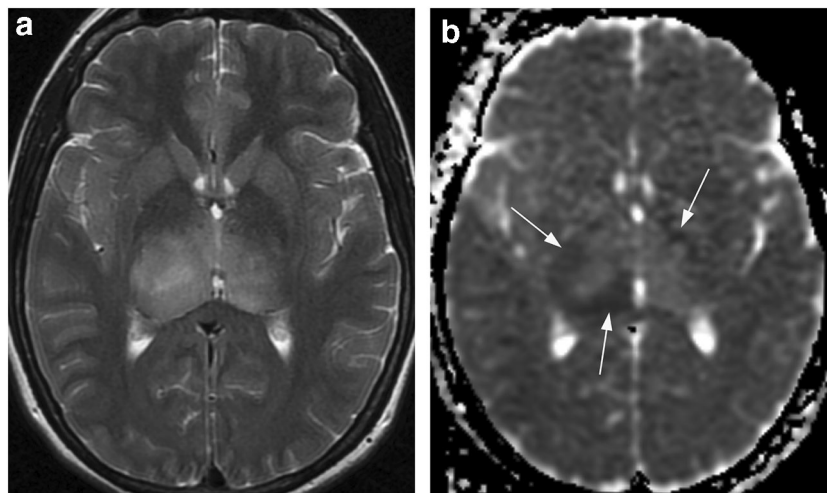
Fig. 30 DCVT. Term neonate with deep venous thrombosis. **a** There is bilateral swelling of the thalami with predominantly low signal intensity (arrowheads) on axial T1-weighted image. Left greater than right central hyperintense area is indicative of haemorrhage. Additionally, there is high signal intensity at the vein of Galen (arrow), suggestive of thrombosis. **b** MR venography reveals the absence of signal in the internal cerebral veins, vein of Galen and straight sinus, confirming DCVT



products, such as glue, gasoline and finger nail polish. While the exposure may be occupational (construction work with paint, employees in fingernail salons and production of gasoline), the recreational abuse (“sniffing glue”) has become a worldwide health and social problem. The mechanism of toxicity is not well understood, despite the high prevalence and serious consequences of toluene-induced encephalopathy.

The imaging studies are typically unremarkable in the acute poisoning. The abnormalities on MRI are found after prolonged chronic abuse (for at least a year, usually a few years) and are irreversible at the time of detection. The characteristic findings are low T2 signal of the thalami and other grey matter, poor differentiation of the cortex from the subcortical white matter, ill-defined white matter T2 hyperintensity and global brain atrophy (Figs. 21 and 59). The characteristic bithalamic low T2 signal may be due to demyelination with secondary deposition of iron and/or to direct accumulation of toluene within the lipid membranes. The duration of abuse correlates with the severity of the imaging findings [47].

Fig. 31 Bithalamic glioma. A 44-year-old male with dizziness, left face paraesthesia and weakness in the left side of body. **a** Axial T2-weighted image shows right greater than left expansion of the thalami with mildly heterogeneous increased signal intensity. **b** Corresponding ADC map reveals heterogeneous nature of the mass lesion with predominantly increased and peripherally reduced (arrows) diffusivity

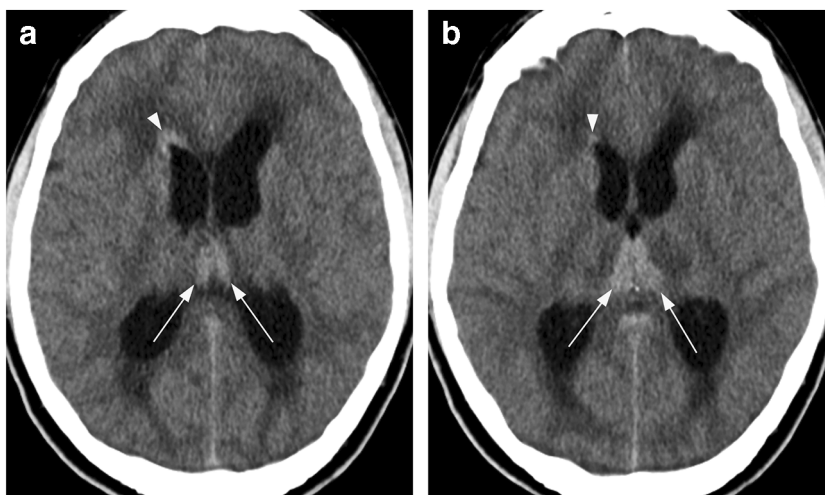


Wernicke encephalopathy

Wernicke encephalopathy (WE) is an acute, initially reversible neuropsychiatric disorder caused by vitamin B₁ (thiamine) deficiency, typically presenting with ocular abnormalities, ataxia and confusion. It usually occurs in the setting of poor diet, classically with alcoholism, which is the most common cause of WE in adults. However, non-alcoholic WE, which can result from gastrointestinal tract diseases and/or surgery, hyperemesis gravidarum and other conditions, is considered underdiagnosed. While inadequate thiamine intake is the cause in children with prolonged malnutrition, WE is becoming increasingly prevalent in paediatric patients with malignancies and prolonged intensive care unit stays.

MRI shows typical symmetric signal alterations along the medial thalami, periaqueductal grey matter, quadrigeminal plate and mammillary bodies (Figs. 22, 23 and 59). The dorsal medulla, cranial nerves, cerebellum and perirolandic cortex are also affected in some patients, typically with non-alcoholic WE [48]. The lesions are hyperintense on DWI,

Fig. 32 Primary CNS lymphoma. A 46-year-old male with headache, collapse and vomiting. **a, b** Non-enhanced axial CT images show hyperdense lesions along the medial thalami (arrows) with adjacent low attenuation. An additional subependymal hyperdense lesion (arrowheads) is present along the frontal horn of the right lateral ventricle. There is also dilation of the ventricles with periventricular oedema and effacement of cortical sulci, consistent with acute hydrocephalus



FLAIR and T2-weighted images, hypointense to isointense on T1-weighted images and showing some degree of contrast enhancement in around a half of the cases. Diffusivity varies from decreased to increased and may be reversible [49]. WE is a readily treatable severe condition, which should be suspected and diagnosed on MRI.

Metronidazole-induced encephalopathy (MIE) is a rare complication of this widely used antimicrobial medication, with clinical presentation that can simulate WE. One of the possible mechanisms of metronidazole toxicity is through production of inhibitory thiamine analogue metabolites. The characteristic MR finding is bilateral T2 hyperintensity of the cerebellar dentate nuclei, along with involvement of splenium of the corpus callosum, periaqueductal grey matter and dorsal brainstem. The signal abnormality of the periaqueductal grey matter and dorsal midbrain may be indistinguishable from WE; however, lesions of the mammillary bodies and medial thalami are extremely rare in MIE, while lesions of the dentate nuclei are quite unusual for WE. Cases of possible combined WE and MIE have also been described [50, 51].

Acute hyperammonaemic encephalopathy

Acute hyperammonaemic encephalopathy is a life-threatening condition that is most commonly caused by severe liver disease, but it may also occur with non-cirrhotic conditions causing increased ammonia production (such as infections by urea-producing bacteria and multiple myeloma) or decreased ammonia elimination—primarily genetic disorders of urea cycle enzymes, portosystemic shunts and drugs (such as paracetamol and valproate). Patients present with progressive drowsiness and seizures, secondary to brain oedema and intracranial hypertension. Acute hyperammonaemic encephalopathy can progress to

coma and death or lead to long-term sequelae, including intellectual impairment [50].

The characteristic MRI findings are bilateral symmetric signal abnormalities in the cortex of the insula and cingulate gyrus, usually accompanied by thalamic involvement (Figs. 24, 25 and 59). The affected areas of cortical and deep grey matter show hyperintensity on T2-weighted images, which is more striking on FLAIR and DWI, while decreased diffusivity may be present on ADC maps. The basal ganglia are usually spared, along with periorlandic and occipital cortices [52, 53].

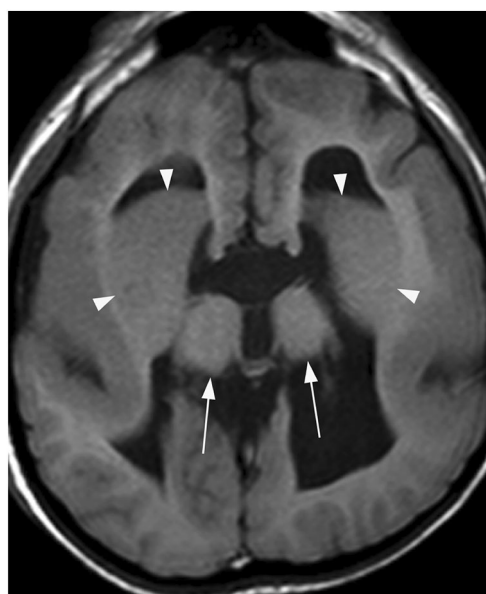


Fig. 33 Tubulinopathy. A 10-year-old girl with mental retardation. There is a dysmorphic appearance of bilateral basal ganglia with fused and malformed caudate nucleus and putamen (arrowheads) on axial T1-weighted image. The thalami are hypoplastic (arrows). There is pachygyria in the insular regions along with the absence of the corpus callosum, Z-shaped brainstem and hypoplasia of the vermis and cerebellum (not shown)

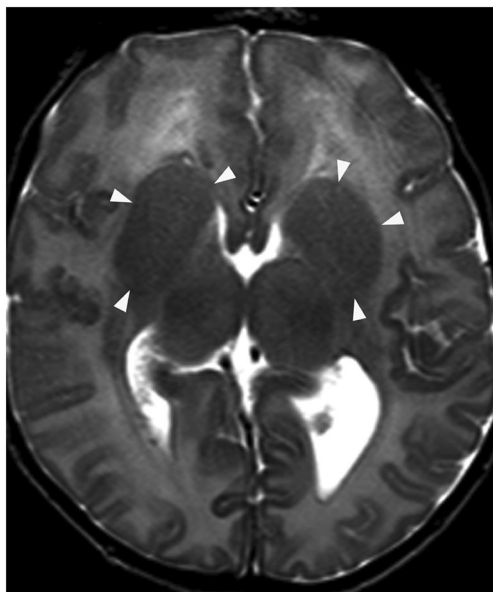


Fig. 34 Tubulinopathy. A 1-month-old girl with failure to thrive. The basal ganglia appear as large round structures with fusion of the caudate and putamen (arrowheads) on axial T2-weighted image. The thalami are slightly asymmetric

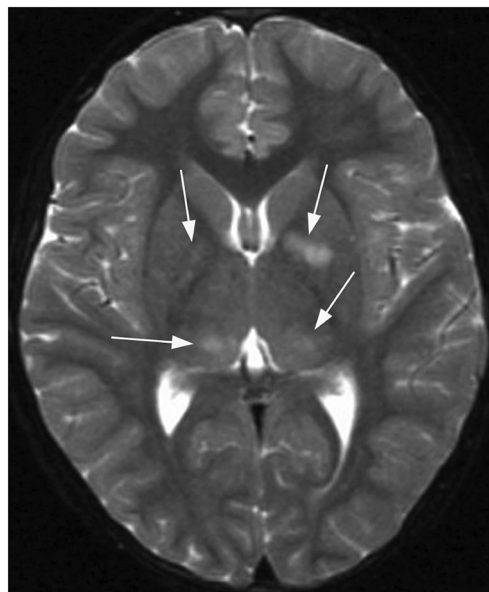


Fig. 36 FASIs in NF-1. Asymmetric ill-defined patchy hyperintensities consistent with FASIs (arrows) are seen in the basal ganglia and thalami on axial T2-weighted image

Inflammatory/infectious

Thalamic involvement, along with white matter lesions, is commonly encountered in children with acute disseminated encephalomyelitis (ADEM). Basal ganglia may also be affected and ADEM is therefore discussed in the “[Pathology involving both the basal ganglia and thalami](#)” section.

Acute necrotising encephalitis

A subset of encephalitides associated with respiratory viruses present as acute necrotising encephalitis (ANE), a rapidly progressive encephalopathy that is typically involving bilateral thalami. In contrast to ADEM, the inflammation is characteristically absent, whereas necrosis and haemorrhage are the predominant findings. ANE is usually preceded by a virus-associated febrile illness, most commonly influenza but also

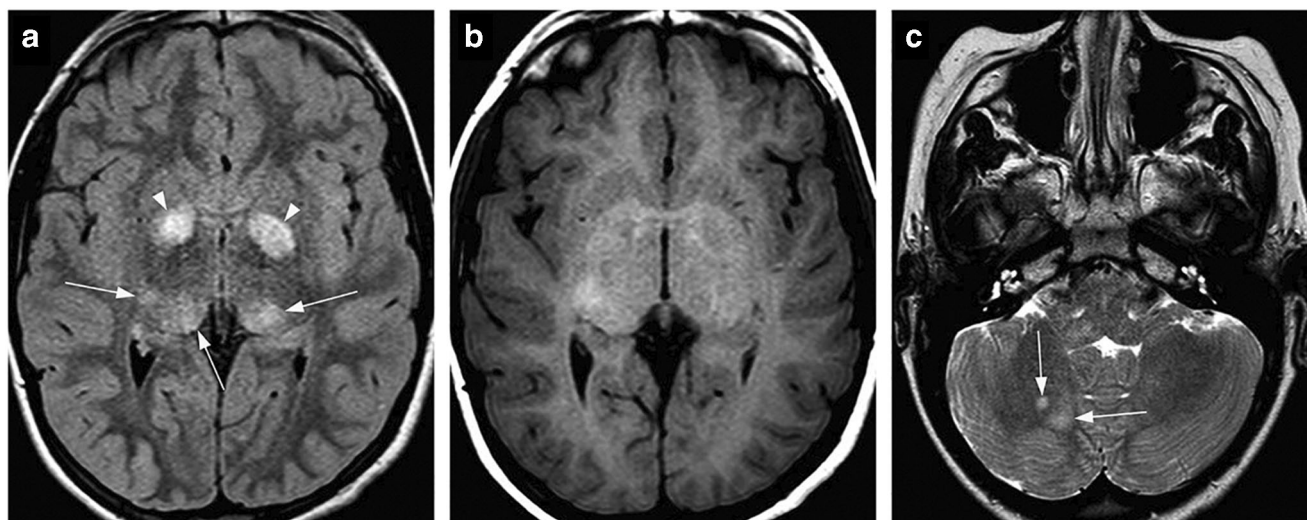


Fig. 35 Focal abnormal signal intensities (FASIs) in NF-1. An 8-year-old boy with confirmed diagnosis of neurofibromatosis type 1 on genetic testing. **a** Axial FLAIR image demonstrates patchy bilateral focal abnormal signal intensities (FASIs) in the globi pallidi (arrowheads) and the

posterior thalami (arrows). **b** On T1-weighted image, some of the lesions appear slightly hyperintense. **c** Axial T2-weighted image shows additional FASIs in the cerebellum (arrows)



Fig. 37 Primary familial brain calcification. A 30-year-old male with primary familial brain calcification (PFBC). Axial CT image demonstrates extensive calcifications in the basal ganglia, thalami and subcortical white matter. The putamina appear atrophic. There are also cerebellar calcifications in bilateral corpus medullare (not shown)

other agents including coronavirus disease 2019 (COVID-19), followed by rapid deterioration [54–56]. This entity occurs predominantly, but not exclusively in young children and has also been known as acute necrotising encephalitis in children (ANEC). ANE may occur sporadically; however, there are recurrent and familial forms associated with mutations in RANBP2 gene [54].

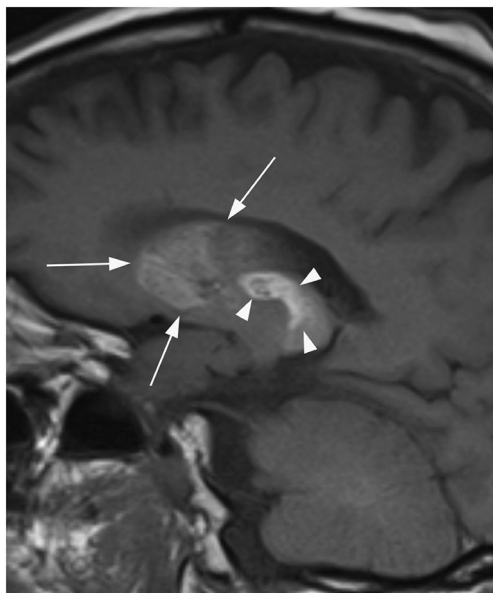


Fig. 38 Primary familial brain calcification. A 57-year-old male with PFBC. Calcifications of the basal ganglia (arrows) and thalamus (arrowheads) are predominantly hyperintense on this sagittal T1-weighted image

The very characteristic imaging findings are bilateral symmetric concentric haemorrhagic lesions of the thalami, best seen on SW-MRI/T2* images, with surrounding oedema, usually accompanied by centrally low and peripherally increased diffusivity (Figs. 26 and 59). This imaging appearance may also be seen with deep venous thrombosis; however, the internal cerebral veins are patent in patients with ANE. The brainstem and subinsular areas, as well as the cerebellum and basal ganglia, can also be affected [54, 55].

Vascular/ischaemic

Artery of Percheron infarction

In most individuals, the arterial supply of paramedian thalami is provided by pairs of thalamo-perforating arteries arising from P1 segments of both posterior cerebral arteries (PCAs). However, in a minority of cases, these perforating vessels stem from a single trunk arising from only one of the PCAs, known as the artery of Percheron. This variant is associated with an asymmetric fusion variant of the basilar tip.

An occlusion of this vessel results in bilateral thalamic infarctions with or without involvement of the rostral midbrain, and cardioembolic disease is considered the most frequent cause. The presenting acute symptoms include visual disturbances, confusion and coma [57, 58].

CT shows paramedian hypodense lesions of both thalami (Figs. 27a and 59), which are generally symmetric. While CT may be initially normal, as with other acute infarcts, MRI is much more sensitive demonstrating bright DWI signal with decreased diffusivity (Fig. 27 b and c) and T2 hyperintensity. The “midbrain V sign” is an additional characteristic imaging feature, which has been reported in the majority of patients. It consists of high signal intensity on FLAIR images that extends bilaterally along the midbrain surface at the interpeduncular cistern [58]. Volume loss with CSF-like density, signal intensity and diffusivity is found in chronic lesions (Fig. 28).

Deep cerebral venous thrombosis

Patients with deep cerebral venous thrombosis (DCVT) tend to present with a few days’ history of headache and reduced consciousness. DCVT may be isolated or a part of a more widespread cerebral venous thrombosis, and it is associated with worse outcomes than dural venous thrombosis, due to the lack of a substantial collateral drainage pathways. Thrombosis of both internal cerebral veins leads to bilateral thalamic lesions, with variable involvement of the basal ganglia, internal capsule, midbrain and upper cerebellum [59].

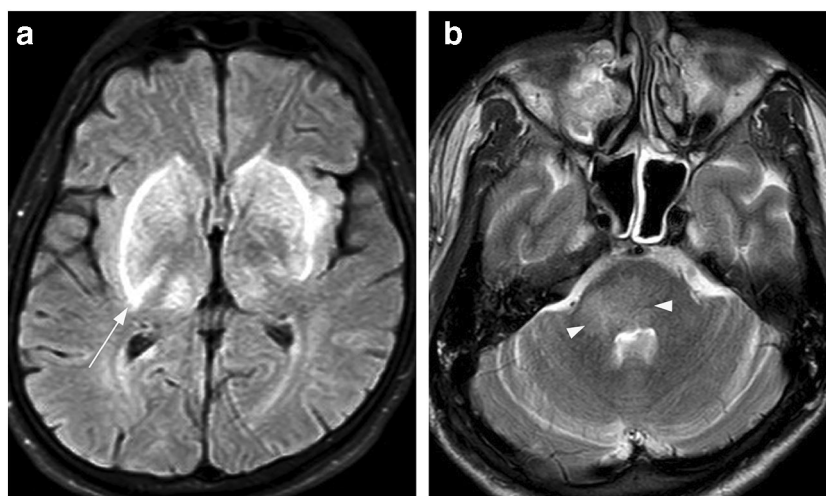


Fig. 39 Ethylene glycol intoxication. A 25-year-old male found unconscious at home, after having his drink spiked with ethylene glycol (antifreeze) the night before. The initial CT scan was unremarkable (not shown). **a** MRI 2 days later demonstrates bilateral symmetric swelling and hyperintensity in the basal ganglia and thalami on axial FLAIR

image. The signal alteration is more prominent along the lateral margin of the putamina, with a suggestion of the lentiform fork sign on the right side (arrow). **b** Axial T2-weighted image through the pons shows increased signal and mild swelling of the dorsal brainstem (arrowheads) extending to the right middle cerebellar peduncle

On CT, there is a prominent hyperdensity of the occluded veins with hypodense and frequently haemorrhagic lesions of the thalami (Figs. 29 and 59) and, in some cases, basal ganglia. Depending on the presence of blood products and infarction, the MRI findings vary and are commonly heterogeneous, including T2 hyperintensity and hypointensity, low and high T1 signal (Fig. 30), as well as diffusion abnormality ranging from increased to decreased. In contrast to arterial infarcts, the observed signal abnormality is primarily due to venous congestion and resultant vasogenic oedema, rather than cytotoxic oedema. The lesions are characteristically bilateral, however strikingly asymmetric in some cases [60].

Dural arterio-venous fistula/vascular malformation

Non-haemorrhagic presentations of dural arterio-venous (AV) fistulas (dAVF) include dementia, which results from venous hypertension in the cortex or, less frequently, in bilateral thalami. The drainage of an dAVF into the deep venous system, primarily vein of Galen, causes bithalamic oedema and rapidly progressive dementia.

Mild swelling with decreased attenuation of the thalami may be seen on CT, while MRI demonstrates diffusely increased T2 signal intensity and diffusivity (high signal on ADC maps) of bilateral thalami with associated mild mass effect. There are no

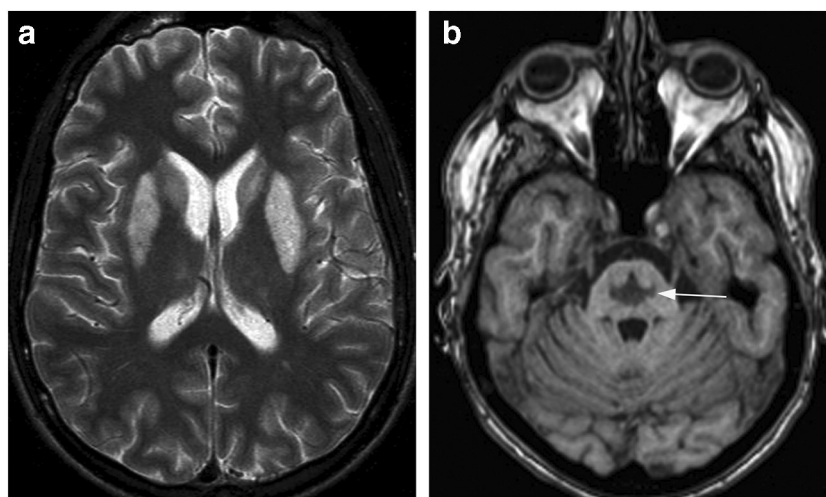


Fig. 40 Osmotic demyelination syndrome (ODS)—extrapontine myelinolysis (EPM) and central pontine myelinolysis (CPM). A 46-year-old man with a background of alcohol abuse presented with hyponatraemia, which was corrected and followed by increasing neurological deficits, including quadriparesis and loss of consciousness. **a**

Axial T2-weighted image at the basal ganglia level shows bilateral symmetric high signal intensity of the putamen and caudate head. There are also subtle hyperintensities in both thalami. **b** Axial T1-weighted image through the posterior fossa reveals a hypointense lesion in the pons with “trident” appearance (arrow), characteristic for CPM

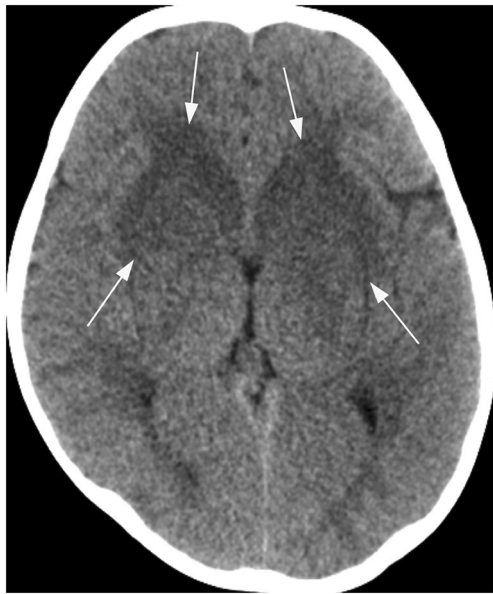


Fig. 41 ODS—extrapontine myelinolysis (EPM). A 7-year-old girl with a background of leukaemia presented with fever, vomiting and horizontal nystagmus. Hyponatraemia was established on admission and promptly adjusted. There is bilateral symmetric swelling and hypodensity of the basal ganglia centred at the caudate head and anterior lentiform nucleus (arrows) on non-enhanced axial CT image

signs of DCVT and no haemorrhage, although microbleeds may be present on SW-MRI. The diagnosis is established by catheter angiogram (cerebral DSA), which can then be followed by endovascular embolisation treatment [61].

Neoplastic causes

Diffuse midline glioma

In the updated WHO 2016 classification of tumours of the central nervous system, a new entity, diffuse midline glioma with H3K27M mutant, has been added, referring to neoplasms previously designated as paediatric diffuse intrinsic pontine

gliomas [62]. Further research has demonstrated that this mutation also occurs in other adult and paediatric midline and paramedial tumours, including thalamic gliomas [63]. Neoplastic lesions of the thalamus are relatively rare, predominantly affecting young adults and children. The deep localisation and the proximity to critical structures implies incomplete resection or non-resectability and poor prognosis. It has been recently found that bilateral thalamic gliomas, in contrast to their unilateral counterparts, frequently harbour mutations in EGFR oncogene, while H3K27M mutants are actually rare. Additionally, genomically tailored therapy (with tyrosine kinase inhibitors) showed encouraging results in a few paediatric patients with such bithalamic neoplasms [60, 64].

Both bilateral and unilateral thalamic gliomas show variable alterations in signal, diffusivity and contrast enhancement, but hyperintensity on T2-weighted and FLAIR images is typical. In contrast to other entities described in this review, a prominent mass effect is their characteristic feature (Figs. 31 and 59).

Primary CNS lymphoma

Primary CNS lymphoma (PCNSL) most commonly arises from the deep brain structures and periventricular regions, usually contacting a CSF surface and with a tendency to spread along the subependymal lining. Medial thalami may be involved, occasionally in a bilateral symmetric fashion. In some cases, the lesions are not in contact with CSF surfaces and basal ganglia can also be affected. The typical imaging features are homogeneous intra-axial solitary or multiple well-defined masses, hyperdense (but of lower attenuation compared to acute blood clots) on non-enhanced CT (Fig. 32) and of low to isointense T2 signal, with marked surrounding vasogenic oedema. The lesions characteristically show dense homogeneous enhancement and very low diffusion with dark appearance on ADC maps (primarily due to high cellularity).

Fig. 42 Brain MRI changes with vigabatrin therapy. A 50-week-old girl with infantile spasms treated with vigabatrin. **a, b** Axial T2-weighted images demonstrate bilateral symmetric hyperintensity of the thalami (arrowheads), basal ganglia (arrows), dentate nuclei (arrowheads) and brainstem (arrows). There is no associated mass effect. The findings were asymptomatic and resolved completely following discontinuation of vigabatrin. Courtesy of Kshitij (Kish) Mankand

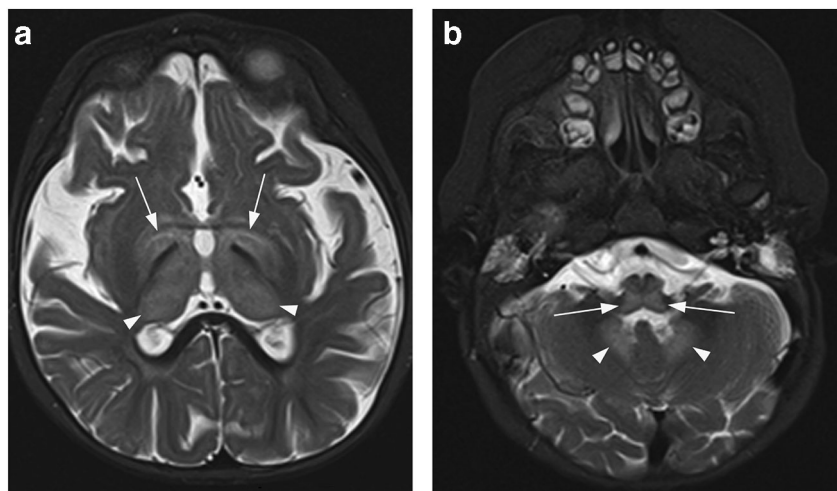
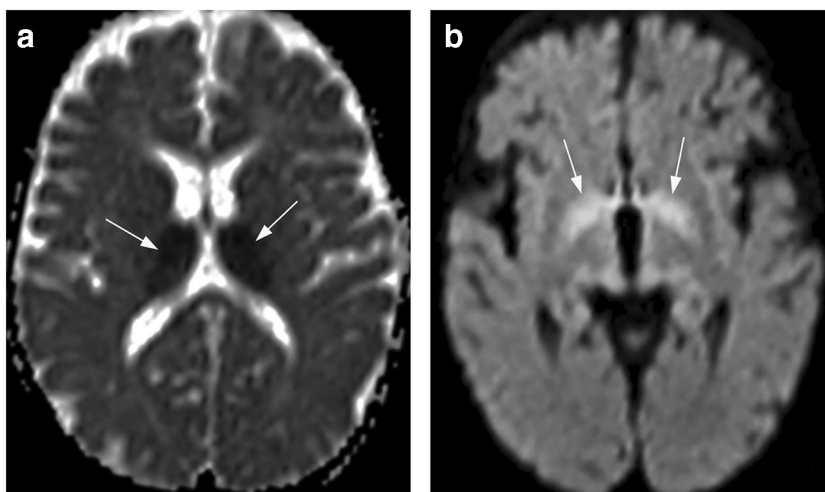


Fig. 43 Brain MRI changes with vigabatrin therapy. A 42-week-old girl treated with vigabatrin for epileptic encephalopathy. **a** There is decreased diffusivity of the thalami with low signal (arrows) on axial ADC map. **b** DWI at a lower level shows hyperintensity of the globi pallidi (arrows). Courtesy of Kshitij (Kish) Mankand



Although the incidence of PCNSL had decreased slightly in the mid-1990s, concordantly with the decreasing rates of AIDS, it has been increasing in the elderly immunocompetent population [65–67]. When hyperdense homogeneous mass lesions with prominent surrounding oedema are seen along the ventricular surfaces on non-enhanced CT scan, the possibility of PCNSL should be raised.

Pathology involving both the basal ganglia and thalami

Inherited metabolic/genetic

Tubulinopathies or tubulin-related cortical dysgenesis

The tubulinopathies are a recently described heterogeneous group of brain malformations with a wide spectrum of clinical severity, which are caused by mutation of one of the seven genes encoding different isotypes of tubulin [68]. Tubulins

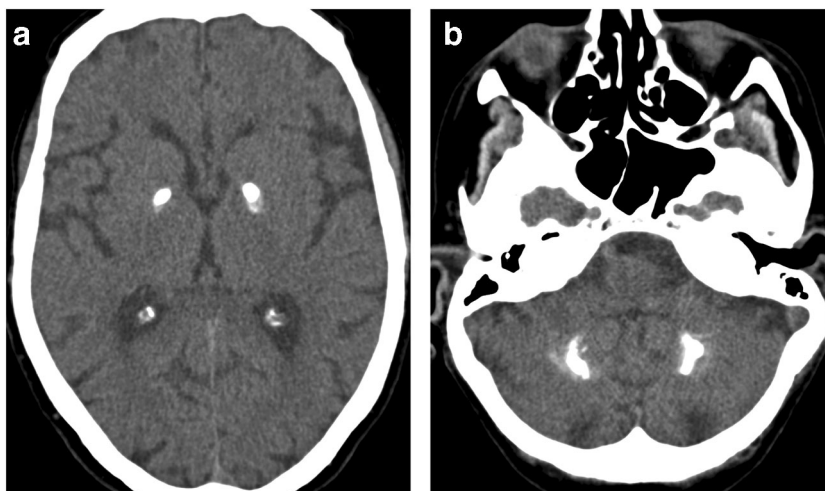
and microtubule-associated proteins play an important role in cortical development. The diagnosis of a tubulinopathy is based on the presence of characteristic brain malformations on MRI and genetic testing.

Dysmorphic deep grey matter structures are the hallmark of the disease (Figs. 33, 34 and 59) and a consequence of abnormal white matter organisation in the internal capsules, such as hypoplasia of the anterior internal capsule. In most cases, the basal ganglia appear as large round structures in which the caudate, putamen and globus pallidus are indistinguishable, and the thalami are hypertrophic. In the microlissencephaly subtype, the basal ganglia are either not visible or severely hypoplastic. Furthermore, tubulinopathies are associated with brainstem hypoplasia and various malformations of the cerebellum, cerebral cortex and corpus callosum [69].

Neurofibromatosis type 1

Neurofibromatosis type 1 (NF-1) is the most common neurocutaneous syndrome/phacomatosis. The classic

Fig. 44 Hyperparathyroidism. A 28-year-old male presented with new-onset tremor and hyperparathyroidism was established on laboratory testing. **a, b** CT demonstrates symmetric dense calcifications in the globi pallidi and dentate nuclei



manifestations include café-au-lait macules, skinfold freckling, neurofibromas, optic pathway gliomas, hamartomas, Lisch nodules (iris hamartomas), characteristic bone lesions, such as sphenoid bone dysplasia, and arteriopathies, such as the Moya-Moya syndrome.

One of the predominant neuroimaging features are focal abnormal signal intensities (FASI), which are present in at least 60–80% of paediatric NF-1 patients. These are scattered ill-defined T2 hyperintense areas without mass effect in the basal ganglia, thalami, brainstem, cerebellum and occasionally cerebral hemispheres (Figs. 35, 36 and 59). FASIs can also show mild hyperintensity on T1-weighted images (Fig. 35b), while a minimal mass effect may occasionally be seen. These lesions are generally not visible on CT and very rarely enhance with gadolinium-based contrast agents. FASIs likely represent areas of vacuolar changes of myelin without evidence of demyelination. The importance of these findings is unknown and the causative relation with cognitive dysfunction is debated. It remains unclear why these changes frequently regress over time and even completely disappear, but can also reappear or temporarily increase in size in some cases [70–72]. The main differential diagnosis of FASIs is low-grade gliomas, which usually demonstrate a more substantial mass effect and, in some cases, contrast enhancement.

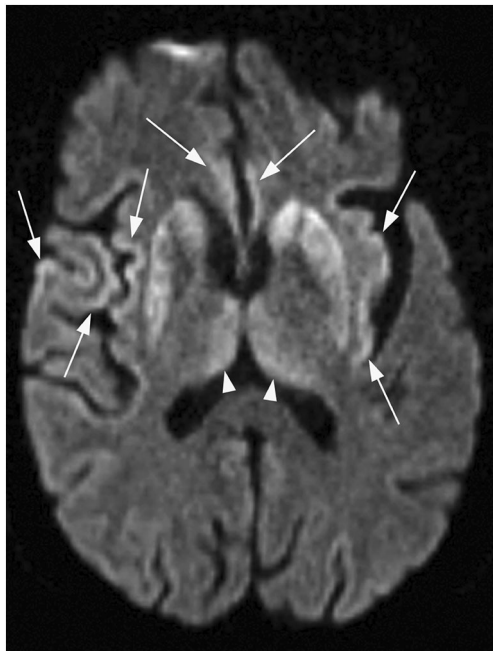


Fig. 45 Creutzfeldt–Jakob disease (CJD). A 69-year-old male with a 5-month history of progressive generalised weakness, aphasia and cognitive decline and confirmed Creutzfeldt–Jakob disease (CJD). Axial DWI shows high signal intensity of bilateral striatum and dorsomedial thalami (“hockey stick” sign, arrowheads). There are also areas of cortical hyperintensity in the right operculum, as well as in bilateral insulae and cingulate gyri (arrows)

Primary familial brain calcification (Fahr disease)

Primary familial brain calcification (PFBC), formerly known as (familial) idiopathic basal ganglia calcification or Fahr disease, is a rare autosomal dominant neurodegenerative disease characterised by abnormal calcium deposits bilaterally in the basal ganglia and other brain regions. The disease usually presents as a combination of abnormal movements, cognitive and psychiatric manifestations, and is clinically indistinguishable from other adult-onset neurodegenerative disorders. Disease onset is usually in the fourth or sixth decade, although PFBC has been described in all age groups [73, 74].

In addition to the basal ganglia, the thalami (especially the posterolateral part), cerebellar dentate nuclei and subcortical white matter are also frequently affected on imaging studies and best seen on CT (Figs. 37 and 38). Less frequently, calcifications can be present in the cerebral and cerebellar cortex as well as brainstem. Confluent cerebral white matter abnormalities may also be associated. Secondary bilateral calcification is present in a variety of genetic, developmental, metabolic, infectious and other conditions. So the main goals in the evaluation of patients with movement disorder, cognitive impairment and psychiatric symptoms, in whom brain calcifications are detected on imaging, are to rule out metabolic disorders, primarily hypoparathyroidism as the most common cause of secondary calcifications, and to find out about the possible family history of the disease.

Other conditions with similar intracranial calcification patterns include Cockayne syndrome and carbonic anhydrase

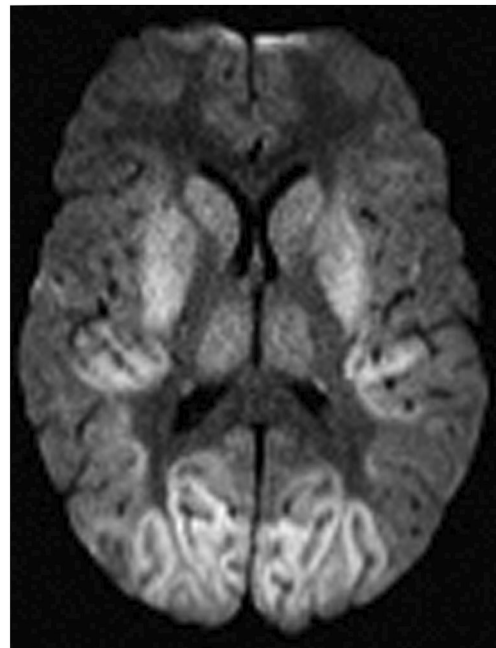
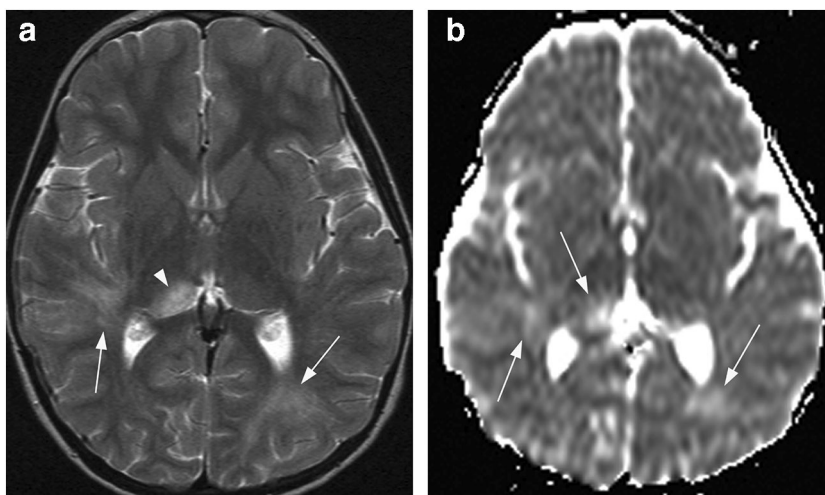


Fig. 46 CJD. A 61-year-old female with rapidly progressive dementia, progressive motor and sensory impairment. CJD was confirmed. There is hyperintensity of bilateral basal ganglia, thalami and occipital cortices, along with partial temporal cortex involvement on axial DWI

Fig. 47 ADEM. A 4-year-old girl presented with behavioural change and seizure following upper respiratory infection. **a** Axial T2-weighted image at the basal ganglia level reveals focal high signal intensity of the dorsal right thalamus (arrowhead). There are also hyperintense white matter changes in the right temporal and left occipital lobes (arrows). **b** The lesions demonstrate increased diffusivity on the corresponding ADC map (arrows)



deficiency type 2 [73, 75–77]. Labrune syndrome and Coats plus syndrome show dense rock-like calcifications; however, there are also white matter signal alterations, cysts and contrast enhancement [76].

Acquired metabolic/toxic

Ethylene glycol intoxication

Ethylene glycol (EG) is a colourless, odourless liquid and is the principal component of anti-freeze. EG ingestion is usually accidental. The life-threatening features are due to the metabolites of ethylene glycol in the same metabolic pathway as methanol. The

accumulation of glycolic acid leads to metabolic acidosis and subsequent encephalopathy. The metabolic effects occur 12–24 h post-ingestion, comparable to methanol [77, 78].

Symmetric involvement of the central deep parts of the brain is the characteristic imaging finding of acute EG toxicity (within the first few days). A diffuse hypodensity of bilateral basal ganglia and thalami extending into the brainstem and adjacent cerebral hemispheres with mild mass effect is the typical pattern seen on the initial CT scan, which may, however, remain unremarkable. MRI reveals bilateral high T2 signal within the central basal portions of the brain (Figs. 39 and 59), primarily at the thalami and basal ganglia, hippocampi and amygdala, as well as the dorsal midbrain and pons. The signal abnormality may extend

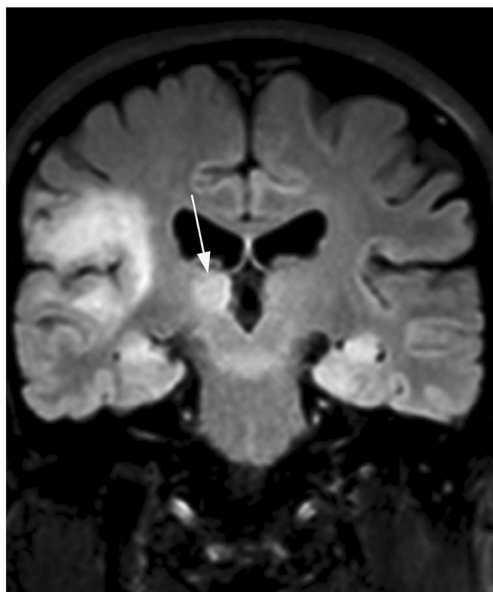


Fig. 48 West Nile viral encephalitis. A 71-year-old male with severe headache, high fever, disorientation, tremors and abnormal movements due to West Nile virus encephalitis. Coronal FLAIR image shows hyperintensity of the right thalamus (arrow), right periopercular fronto-insulo-temporal region, bilateral hippocampi and left uncus

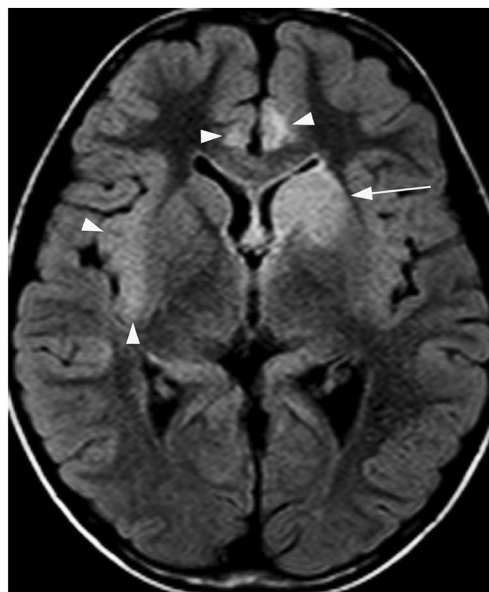


Fig. 49 EBV viral encephalitis. A 6-year-old boy with Epstein–Barr virus encephalitis. There is a hyperintense lesion with mild mass effect involving the left caudate head and ventral putamen (arrow) on axial FLAIR image. Furthermore, there are cortical lesions of high signal intensity in bilateral cingulate gyri and right insula (arrowheads)

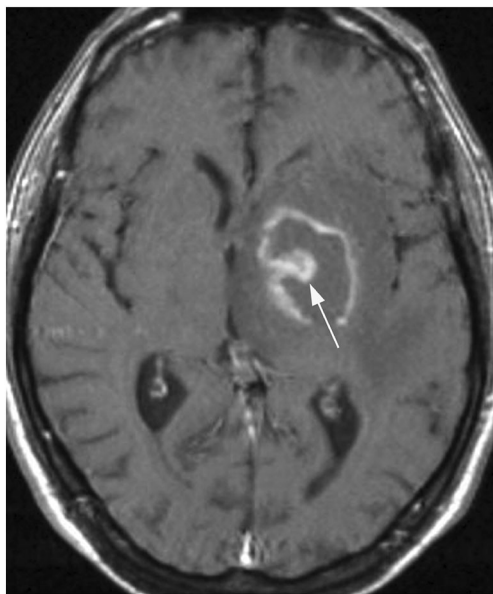


Fig. 50 Cerebral toxoplasmosis. A 32-year-old man with known HIV infection and a 5-day history of increasing confusion, headache and fever. Axial post-contrast T1-weighted image demonstrates an oval enhancing lesion at the left basal ganglia with surrounding vasogenic oedema and prominent mass effect. The enhancement is peripheral with an internal nodular extension (arrow), representing the “eccentric target” sign of toxoplasmosis

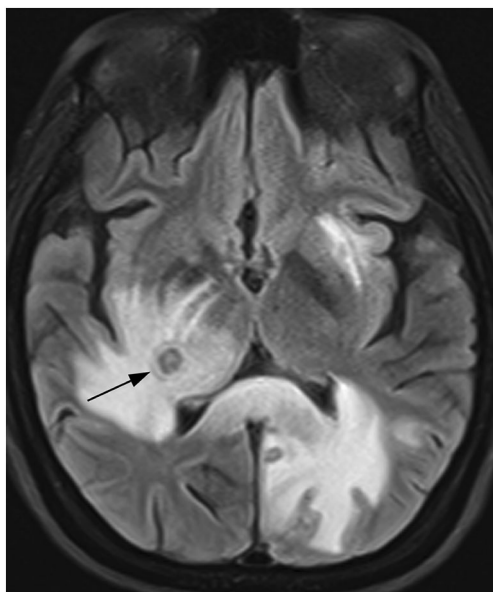


Fig. 51 Cerebral toxoplasmosis. A 38-year-old woman presenting with fever, headache, blurred vision, seizures and left-sided weakness was found to be HIV positive. **a** There are at least three areas of vasogenic oedema in this axial FLAIR image. Within the oedema of the right hemisphere, there is a round retrolenticular lesion with internal layers—concentric alternating hypointense and hyperintense areas (arrow). This characteristic appearance represents the “concentric target” sign of toxoplasmosis

into the adjacent portions of the cerebellum, brainstem and insulae, along with a mild mass effect. Haemorrhagic lesions of bilateral globus pallidus or putamen, suggesting CO and methanol intoxication, have also been reported [77–80].

Osmotic demyelination syndrome

Osmotic demyelination syndrome (ODS) is classically associated with a swift adjustment of hyponatraemia. However, it can result from a wide variety of electrolyte abnormalities and their correction, frequently encountered in chronically debilitated patients. ODS is histologically characterised by non-inflammatory destruction of myelin sheaths with sparing of the underlying axons. Features of the syndrome include quadriplegia and neurocognitive changes in the presence of typical lesions on brain MRI, representing central pontine myelinolysis (CPM) and extrapontine myelinolysis (EPM) [81].

There is, however, commonly a delay of the imaging features of several days or even weeks after the onset of symptoms, and reduced diffusivity on ADC maps may be the earliest finding. The hallmark of EPM is the striking symmetry of signal alterations, a feature of metabolic abnormalities, with T2 hyperintensity in the striatum, thalamus, external and extreme capsule (Fig. 40a). Corresponding hypodensities could be seen on CT (Fig. 41). The hippocampus, cerebellum and cerebral cortex may also be affected, while diffusivity depends on the scan timing. EPM may be seen without or in conjunction with CPM, which demonstrates the characteristic trident-shaped T2 hyperintense area with low T1 signal in the central pons (Fig. 40b) sparing the corticospinal tracts [81]. At least in some cases, EPM may precede CPM on imaging studies [82].

Brain MRI changes with vigabatrin therapy

Vigabatrin, an effective antiepileptic medication for infantile spasms, is responsible for development of brain abnormalities on MRI in around 25% of treated infants. The characteristic imaging findings of symmetric high T2 signal and reduced diffusion are seen in the thalami, which may be accompanied with involvement of globi pallidi, brainstem tegmentum and cerebellar dentate nuclei (Figs. 42, 43 and 59) [83, 84]. These reversible and generally completely asymptomatic findings are associated with peak vigabatrin dosage. However, hyperkinetic movement disorders and life-threatening acute encephalopathy may develop in rare cases. The uncommon symptomatic MRI changes do not appear to be dose-dependent and could be associated with concomitant hormonal therapy. Vigabatrin-associated MRI abnormalities have not been found in older children and adults [84].

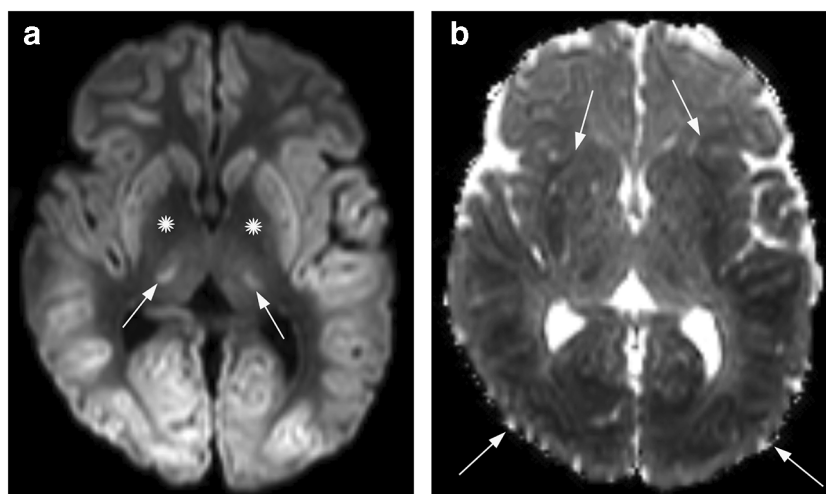


Fig. 52 Hypoxic–ischaemic encephalopathy (HIE). A 44-year-old female following resuscitation after ventricular fibrillation and cardiac arrest. **a** There is bilateral hyperintensity of the striatum and predominantly posterior cortical grey matter, along with focal thalamic lesions (arrows) on axial DWI. The lesions are so diffuse and widespread that the image might even appear normal (with a wider window setting), except for the

fact that the globi pallidi (*) and most of the thalami are spared and not as bright. **b** There is reduced diffusivity of the lesions on corresponding ADC map (arrows), consistent with cytotoxic oedema. In contrast to most other clinical settings, the abnormally low ADC signal is actually more conspicuous than the DWI hyperintensity

Endocrinological disorders related to parathyroid hormone disturbances

Cerebral calcifications are classified into three groups: physiological, idiopathic and secondary to calcium metabolism alterations. The most common aetiology of prominent bilateral intracranial calcifications are various types of hypoparathyroidism and pseudohypoparathyroidism, which can be caused by numerous disease processes. The observed bilateral symmetric calcifications in the globi pallidi, putamen and caudate nuclei on CT with correspondent hypointense signal on T2-weighted and SWI-MRI are sometimes referred to as Fahr syndrome. The thalami, subcortical white matter and cerebellar dentate nuclei are usually affected to a lesser extent (Fig. 44), followed by the cerebral cortex, hippocampus, subcortical and cerebellar white matter.

The extent of calcification is variable, depending on the stage of the disease and duration of metabolic abnormalities [85, 86]. Associated findings in primary hypoparathyroidism are diffuse patchy osteolytic lesions in the skull, whereas plaque-like dural calcifications and vascular calcifications, most notably of carotid arteries, are encountered in secondary hyperparathyroidism.

Creutzfeldt–Jakob disease

Creutzfeldt–Jakob disease (CJD) is a rapidly progressive, fatal neurodegenerative disease typically characterised by dementia, ataxia, myoclonus and behavioural changes. CJD is a rare disorder with an annual incidence of 1–2 per million worldwide and is caused by accumulation of an abnormally shaped membrane-bound prion protein in neurons. It is subdivided

Fig. 53 HIE. Term neonate with peripartal asphyxia and convulsions. **a** There is bilateral decreased diffusivity with low ADC values compatible with cytotoxic oedema in the globi pallidi and ventrolateral thalami (arrows). **b** There is absence of the normal high signal in the myelinated PLIC (arrows), which should be present in a term neonate on axial T1-weighted image. This is known as the “absent posterior limb” sign

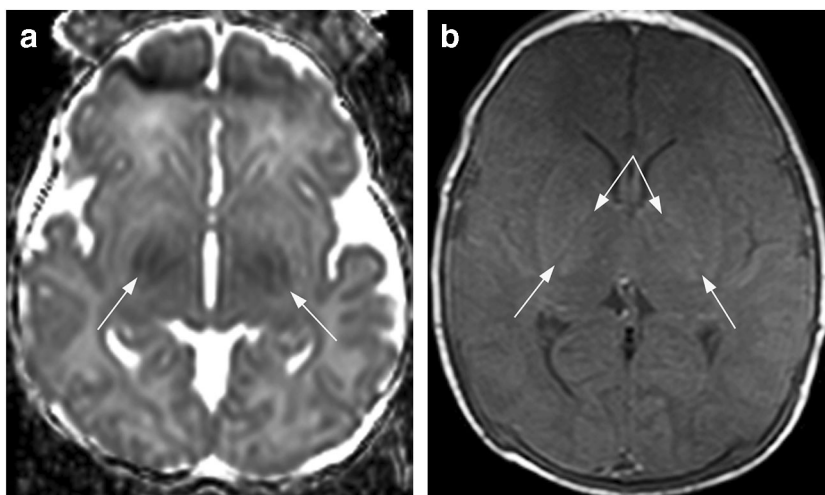
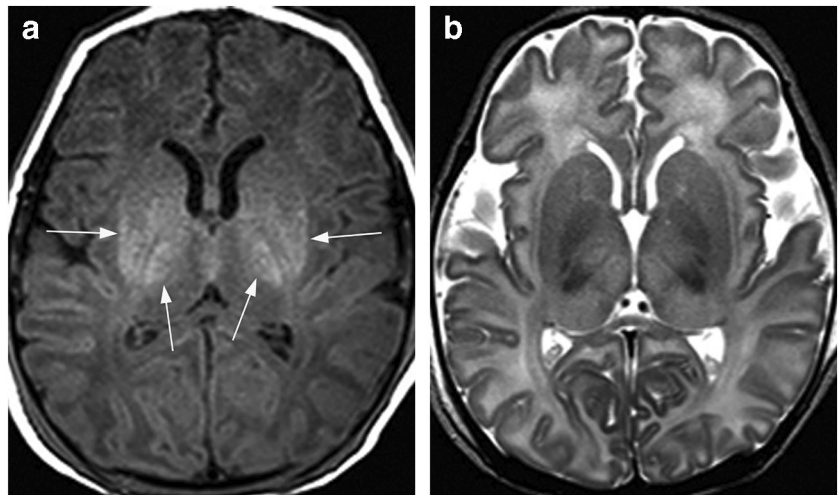


Fig. 54 HIE. A 5-day-old term neonate with severe perinatal asphyxia. **a** Axial T1-weighted and **b** T2-weighted images demonstrate bilateral symmetric signal alteration in the ventrolateral thalami, globi pallidi and posterior putamina, which are hyperintense (arrows) and hypointense, respectively. The findings are compatible with HIE. Note the bilateral high T1 signal of myelin in the posterior limb of the internal capsule (PLIC), which is normal in neonates after 37 weeks of gestational age



into sporadic, familial and acquired forms. About 85–90% of cases are classified as sporadic CJD (sCJD), for which no aetiology can be identified. Genetic or familial CJD (fCJD), which is caused by 4 common and many other mutations in the prion protein gene, accounts for 10–15% of the cases. The acquired (infectious) form consists of iatrogenic CJD and variant CJD (vCJD, which originated as a zoonosis via consumption of contaminated beef) and comprises less than 1% of the cases [87].

MRI of the brain with DWI sequences is the most useful test with over 90% accuracy and should be obtained in all patients with a rapidly progressive neurological syndrome. The findings include hyperintensity on both FLAIR and DWI that is confined to the grey matter

in the cortex (“cortical ribboning”), striatum (putamen and caudate nuclei), medial and/or posterior thalamus, or a combination of these areas, without any thickening or oedema (Figs. 45, 46 and 59). Decreased diffusivity with low signal on ADC maps is frequently present, but this is not very conspicuous and may change over time. In addition to bilateral findings, unilateral cortical and deep grey matter hyperintensity is frequently observed (Fig. 59) and represents a typical CJD pattern (in contrast to almost invariably symmetric lesions in metabolic and toxic disorders).

The MRI criteria for sCJD are DWI signal abnormality from either at least two cortical regions or both the caudate nucleus and putamen [87, 88]. Cortical DWI hyperintensity also appears to be a presymptomatic marker, as the abnormalities on MRI have been found to antedate the onset of sCJD [89]. Bilateral symmetric posterior thalamic hyperintensity on FLAIR and DWI is known as the pulvinar sign (which along with involvement of dorsomedial thalami gives the “hockey stick” appearance) and is considered pathognomonic for vCJD, however only if the signal in the thalami is brighter than in the caudate and putamina [87].



Fig. 55 Hypertensive haematomas. A 75-year-old female presenting with left hemiparesis and Glasgow coma score (GCS) 6. Non-enhanced axial CT image shows right greater than left hyperdense lesions (arrows) at the lentiform nucleus and posterior limb of the internal capsule with a thin rim of low attenuation, consistent with acute hypertensive haematomas

Infectious/inflammatory

Acute disseminated or demyelinating encephalomyelitis

Acute disseminated encephalomyelitis aka ADEM is a usually transitory, monophasic and self-limiting immune-mediated inflammatory disease that can involve the brain and the spinal cord, typically affecting young children and adolescents. A preceding viral infection or less frequently immunisation is believed to trigger the inflammatory process based on cross-reactivity. However, many cases do not have a clear history of an infectious trigger, and an autoimmune aetiology is

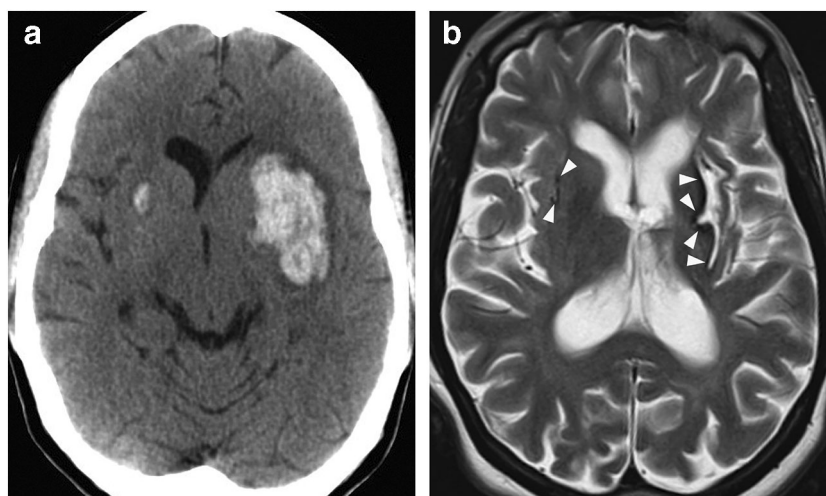


Fig. 56 Hypertensive haematomas. A 59-year-old male with sudden loss of consciousness. **a** There are left greater than right acute hypertensive haemorrhages centred at putamina on this non-enhanced axial CT image. There are also adjacent surrounding areas of low attenuation, consistent

with extruded serum and oedema around the blood clot, and a prominent mass effect on the left. **b** Follow-up T2-weighted image 2 years later reveals corresponding slit-like lesions with peripheral hypointensity (arrowheads) representing haemosiderin staining

considered. In roughly 40% of the cases, antibodies to the myelin oligodendrocyte glycoprotein (MOG) are found [90]. Most patients recover completely with concomitant resolution of the imaging findings. In a minority of cases, the disease shows a multiphasic course or eventually progresses to multiple sclerosis [91].

On MRI, in addition to the white matter (and possibly spinal cord lesions), the basal ganglia and thalami are often bilaterally but asymmetrically involved with ill-defined T2 hyperintense lesions (Figs. 47 and 59) and variable heterogeneous contrast enhancement. Diffusivity of the lesions is usually increased (Fig. 47b); however, low diffusion with peripheral dark band on ADC maps

is not uncommon and likely corresponds to advancing demyelination. The lesions may be hard to distinguish from other demyelinating diseases and infectious encephalitis (with selective grey matter involvement). ADEM associated with anti-MOG antibodies may also be combined with autoimmune encephalitis [92].

Acute haemorrhagic encephalomyelitis (AHEM, Hurst disease) is a rare and severe form characterised by rapidly progressive tumefactive white matter lesions and haemorrhagic foci, which are hypointense on GRE T2* or SW-MRI, with variable basal ganglia and thalamic involvement. AHEM with thalamic involvement may occasionally have an appearance very similar to ANE.

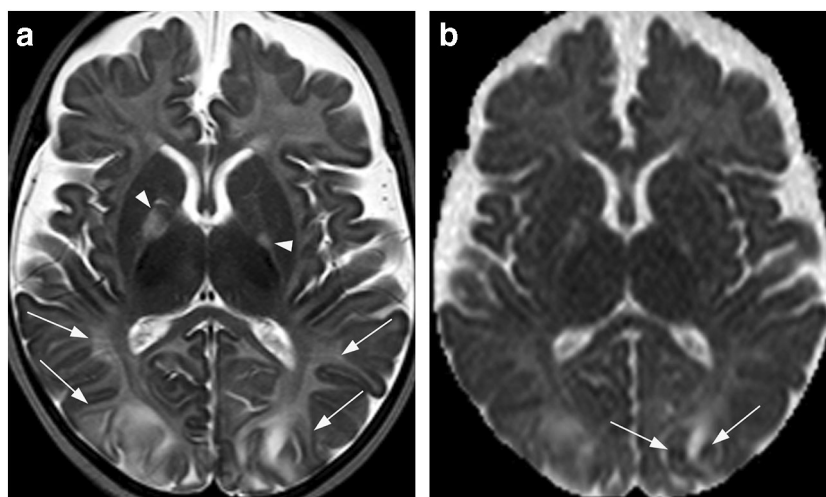
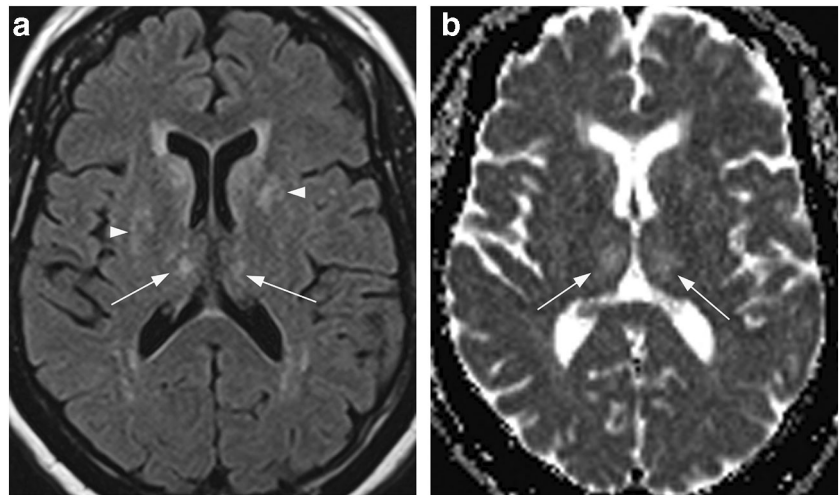


Fig. 57 Posterior reversible encephalopathy syndrome (PRES). A 2-month-old boy with PRES. **a** Axial T2-weighted image reveals bilateral confluent hyperintense areas in the cortico-subcortical parieto-occipital regions (arrowheads) along with right greater than left involvement of the

globi pallidi (arrowheads). **b** The lesions are predominantly showing increased diffusivity with high signal on the corresponding ADC map representing vasogenic oedema. There are, however, a few small cortical areas of reduced diffusivity (arrows) indicative of cytotoxic oedema

Fig. 58 PRES. A 68-year-old male presenting with mental status change, headache, ataxia and dizziness. High blood pressure on exam. **a** There are scattered hyperintense lesions in bilateral caudate heads, lentiform nuclei (arrowheads), thalami (arrows) and periventricular white matter on axial FLAIR image. **b** Corresponding ADC map shows mildly increased diffusivity of the lesions, best seen in the thalami (arrows)



Viral encephalitis

Viruses have a propensity to affect grey matter structures, leading to a fairly common, usually asymmetrical, high T2 signal intensity on MRI and hypodensity on CT in bilateral thalami and/or basal ganglia. Consequently, viral infection should always be taken into consideration when such lesions are found in an appropriate clinical setting [93]. Some of the viruses characteristically lead to a specific localisation and/or imaging appearance of lesions in the CNS; however, they may also present with non-specific findings, while other infections and non-infectious diseases may simulate their typical presentation [93].

Arboviruses (arthropod borne viruses) include three different groups of infectious agents that are transmitted by insects, most commonly mosquitoes. Flaviviridae is the most prominent group that includes agents causing Japanese and West Nile, as well as tick-borne encephalitis. The characteristic imaging findings include bilateral focal patchy thalamic lesions that are of low attenuation on CT and of high T2 signal intensity, typically bright on DWI (usually with reduced diffusivity on ADC maps, at least in some parts). The basal ganglia and brainstem are frequently affected, and cortical abnormalities may also be found (Figs. 48 and 59). There is some mass effect (with expansion of the anatomic structures, not a focal mass) in larger lesions and haemorrhages may be seen, while contrast enhancement is variable. The spinal cord and cauda equina can also be involved [94, 95].

Epstein–Barr virus is one of the members of herpesvirus family that can cause neurologic diseases. Most cases of EBV encephalitis occur in children as a rare complication of infectious mononucleosis [96]. EBV encephalitis is frequently associated with abnormalities in the deep grey matter, and bilateral involvement of the basal ganglia and thalami is characteristic, frequently with associated cortical lesions (Fig. 49) [97].

Cerebral toxoplasmosis

Cerebral toxoplasmosis, caused by the protozoan parasite *Toxoplasma gondii*, is the most common opportunistic CNS infection in AIDS patients, who are especially susceptible to reactivation of a latent infection when their CD4 count falls below 100 cells/ μ L [98].

The lesions are typically located in the deep grey matter and at corticomedullary junction, appearing as multiple (or solitary) areas of low attenuation on unenhanced CT and exhibiting nodular or ring enhancement on post-contrast CT and T1-weighted MR images. Ring-enhancing lesions can show an internal eccentric nodule, referred to as the “eccentric target sign” (Figs. 50 and 59), which is highly specific for toxoplasmosis, but seen in less than 30% of the cases. Another specific MRI feature is the “concentric target sign” in T2-weighted and FLAIR images with alternating concentric layers of hypo- and hyperintensities (a hypointense core, an intermediate hyperintense area and a peripheral hypointense zone), surrounded by high signal of vasogenic oedema (Figs. 51 and 59).

The lesions of toxoplasmosis demonstrate decreased rCBV on perfusion imaging (which is typical for inflammatory and infectious lesions) and usually central high signal of increased diffusivity on ADC maps, in contrast to PCNSL, which is the main differential diagnosis in HIV-infected patients [98, 99].

Vascular/ischaemic

Hypoxic–ischaemic encephalopathy and status marmoratus

The pattern of brain injury in global hypoxia depends on the level of brain maturation at the time of insult and the severity and duration of the event. Anoxic injury may range from mild to moderate and severe. It is the severe

P R E D O M I N A N T L Y B A S A L G A N G L I A	Hypoglycaemia BL BG and diffuse cortical GM on DWI	AIE BL striatum (+/- hippocampi & other areas)	Hypoglycaemia unilateral striatum on T1w and CT	Cryptococcosis BL scattered focal BG lesions	CID striatum & cortex (+/- thalami) on DWI	NF-1 FASIs Scattered, ill-defined on T2w & T1w	
	WD striatum (+/- brainstem, thalami & GP)	Leigh Sy BL symmetric BG & brainstem (+/- thalami)	Methanol poisoning BL putamen (+/- haemorrhage) and frontal WM	Uraemia / Acidosis BL lentiform fork sign	Ethylene glycol central brain (BG & thalami + brainstem)	Vigabatrin BL thalami and BG + brainstem & dentate	
	WD/chronic liver failure bright GP on T1w	Gd/Mn deposition T1 bright GP	Kernicterus BL GP (+ subthalamic nucleus)	GA Type 1 BL BG & WM + wide Sylvian fissures	HIE Adult symmetric deep & cortical GM on ADC	HIE Neonate absent PLIC T1 bright central GM	
	CO poisoning BL focal GP lesions	PKAN BL eye of tiger sign	Germinoma UL or BL T2* dark, hemiatrophy	HD BL striatum atrophy	Tubulinopathy fused malformed BG + other findings	PRES BL WM and GM oedema	
	P R I M A R I L Y T H A L A M I	AoP infarct BL focal infarcts (+/- midbrain)	ANE BL concentric haemorrhagic thalamic lesions	DCVT swelling +/- haemorrhage & venous clot	Midline glioma prominent mass effect	Viral encephalitis asymmetric central & cortical GM	ADEM asymmetric central GM & WM
		Hypermonaemia BL GM of insula, cingulate & thalami	WE BL paramedial + periaqueductal & mammillary	Gangliosidosis T1 bright & T2 dark thalami	Toluene toxicity T2 dark thalami & hyperintense WM + atrophy	Toxoplasmosis Eccentric target sign	Toxoplasmosis Concentric target sign
		B A S A L G A N G L I A A N D T H A L A M I					

injury that affects the central grey matter structures in infants, young children and adults.

Perinatal asphyxia is the most important cause of HIE and the damaged areas parallel the myelinating regions. Severe HIE in preterm neonates results in lesions of the thalami,

dorsal brainstem and anterior vermis. Conversely, in term neonates and infants up to 1 year, the globi pallidi, posterior putamina, ventrolateral thalami, hippocampi, dorsal brainstem and sensorimotor cortex are most affected. When bilateral basal ganglia lesions are seen in a neonate and there is little

◀ **Fig. 59** Summary overview of most pathologies listed in this review paper. **Predominantly involving the basal ganglia.** Leigh Sy—BL symmetric BG and brainstem (+/- thalami); glutaric aciduria type 1—BL BG and WM + wide Sylvian fissures; WD—BL symmetric striatum on T2w (+/- brainstem and thalami), GP on T1w; HD—BL atrophy of striatum—“boxed-out” frontal horns; PKAN—BL GP “eye of the tiger” sign; CO poisoning—BL focal GP lesions; kernicterus—BL GP (+ subthalamic nucleus); chronic HE/Mn/Gd deposition—BL GP on T1w; methanol poisoning—BL putamen (+ haemorrhage) and frontal WM; uremic encephalopathy/metabolic acidosis—BL lentiform fork sign; hypoglycaemia—BL BG and diffuse cortical GM on DWI; hyperglycaemia—unilateral striatum on T1w and CT; autoimmune encephalitis—BL striatum (+/- hippocampi and other areas); cryptococcosis—scattered focal BL BG lesions; germinoma—UL or BL on T2*w, hemiatrophy. **Predominantly involving the thalami.** Gangliosidosis—T1 bright and T2 dark thalami; toluene toxicity—T2 dark thalami and hyperintense WM, atrophy; WE—BL paramedial thalami (+ periaqueductal GM and mammillary bodies); acute hyperammonaemia—BL GM of insula, cingulate and thalami; ANE—BL concentric haemorrhagic thalamic lesions; artery of Percheron infarction—BL focal thalamic infarcts (+/- midbrain); DCVT—thalamic swelling with haemorrhage and venous thrombosis; bithalamic glioma—prominent mass effect. Affecting the **basal ganglia and thalami.** Tubulinopathy—fused malformed BG + other findings; NF-1 FASI—scattered patchy ill-defined; EG poisoning—BL BG and thalami; vigabatrin-associated MRI changes—BL thalami and BG (+ brainstem and dentate nuclei); CJD—BL or UL striatum and cortex (+/- thalami—“hockey stick” sign) on DWI; ADEM—asymmetric central GM and WM; viral encephalitis—asymmetric central and cortical GM; toxoplasmosis—eccentric and concentric target sign; HIE adult—symmetric central and cortical GM on ADC; HIE neonate—absent PLIC, T1 bright central GM; PRES—BL WM and GM oedema. ADEM, acute disseminated encephalomyelitis; AIE, autoimmune encephalitis; AoP, artery of Percheron; ANE, acute necrotising encephalitis; BG, basal ganglia; BL, bilateral; CJD, Creutzfeldt–Jakob disease; CO, carbon monoxide; DCVT, deep cerebral venous thrombosis; FASIs, focal abnormal signal intensities; GA, glutaric aciduria; GM, grey matter; GP, globus pallidus; HD, Huntington disease; HIE, hypoxic–ischaemic encephalopathy; PKAN, pantothenate kinase-associated neurodegeneration; PRES, posterior reversible encephalopathy syndrome; UL, unilateral; WD, Wilson disease; WE, Wernicke encephalopathy; WM, white matter

evidence for perinatal hypoxia, inborn errors of metabolism, such as sulphite oxidase deficiency, should be considered as a differential diagnosis [100]. HIE in older children and adults causes diffuse injury to the grey matter with symmetric involvement of the basal ganglia, thalami and cortex (Figs. 52 and 59).

The affected areas show decreased diffusivity followed by T2 hyperintensity on MRI and hypodensity on CT. Diffusion MR imaging in perinatal HIE reliably shows hyperintense signal on DWI and reduced diffusivity on ADC maps after 24 h (Fig. 53a), which peaks at 3–5 days after the hypoxic event, which represents the optimal timeframe to scan the neonates. Afterwards, pseudonormalisation of diffusivity occurs on ADC maps. T2 hyperintensity of the basal ganglia and thalami is generally present after 2 days and slowly disappears over time. By the third day, T1 shortening will be seen in the injured areas (Fig. 53b) and remain for many months [100,

101]. This leads to a characteristic reversal of normal T1 hyperintensity in the myelinated posterior limb of the internal capsule (PLIC) compared to the adjacent deep grey matter structures (Figs. 54 and 59) in term neonates (the basal ganglia and thalami become brighter than PLIC on T1-weighted images).

The diffusion abnormalities are essentially always present on MRI scan following anoxic injury in adults (most commonly following cardiac arrest) and older children. Although the clinical context of HIE is mostly clear, an alternative diagnosis or combined pathophysiology may be considered in the unconscious patient of unknown aetiology, such as toxic encephalopathy or metabolic acidosis.

Status marmoratus or “état marbré” is a rare manifestation of the chronic features of profound perinatal HIE in full-term neonates. The initial ischaemic damage evolves to gliosis and is mixed with an abnormal or excessive myelination in the second part of the first year of life, causing a marbled appearance of the basal ganglia and thalami [102]. On MRI, the hypermyelination is most apparent in the putamen. There is abnormal T2 hyperintensity throughout the basal ganglia and thalami, often combined with severe cerebral atrophy.

Hypertensive haematoma

Hypertensive haemorrhages typically occur in areas supplied by penetrating vessels with the most common locations being the central grey matter, primarily the putamen (around 65%) and thalamus (about 20%), followed by the pons and medial cerebellum. The imaging modality in the acute setting is usually CT, which reveals hyperdense lesion with attenuation values of blood clot in these characteristic locations and is highly suggestive of the diagnosis. Thin peripheral contrast enhancement may be observed around the haematoma [103].

Simultaneous bilateral hypertensive basal ganglia and/or thalamic haemorrhages may rarely be encountered in the acute setting (Figs. 55 and 56b), usually asymmetric [104, 105]. The hypertensive haematomas typically dissect the brain without a considerable amount of associated tissue necrosis, so that chronic lesions are transformed into slit-like cavities with peripheral low T2 signal due to haemosiderin staining (Fig. 56b), which is accentuated on SW-MRI or GRE T2* images [103]. In contrast to acute lesions, chronic bilateral hypertensive haematomas are not an uncommon finding in deep grey matter.

Posterior reversible encephalopathy syndrome

Posterior reversible encephalopathy syndrome (PRES) is classically and commonly triggered by an acute hypertensive state. However, multiple other conditions may predispose to PRES. Damage to the vascular endothelium with subsequent

Table 1 A summary overview listing the clinical, imaging and biochemical findings in the disease entities discussed in this paper

Deep grey matter lesions	Imaging findings		Clinical findings	Biochemistry
	Characteristic	Common or possible		
a. Predominantly involving the basal ganglia				
Leigh syndrome	BL symmetric putamen (+/- brainstem) T2 hyperintensity Reduced diffusivity in acute phase	BL symmetric T2 hyperintensity subthalamic nucleus, substantia nigra, caudate nucleus, globus pallidus, dorsomedial thalamus, dentate nuclei	Progressive neurodegeneration in infancy and early childhood—feeding difficulties, psychomotor retardation, ataxia	Mitochondrial disease, mutations in > 75 genes; elevated lactate
Glutaric aciduria type 1	BL symmetric caudate and putamen T2 hyperintensity + wide Sylvian fissures, subdural hygromas and delayed myelination	Confluent WM T2 hyperintensity Subependymal nodules along lateral ventricles Macrocephaly	Acute encephalopathy in infancy precipitated by infection, immunisation or surgery—psychomotor regression with dystonia; insidious without crises	Deficiency of glutaryl-CoA dehydrogenase—newborn screening; metabolite levels, enzyme analysis, two mutations
Wilson disease	BL symmetric putamen and caudate T2 hyperintensity (concentric-laminar) BL symmetric GP T1 hyperintensity	Brainstem and thalami T2 hyperintensity—midbrain with sparing of red nuclei and superior colliculi produces “face of the giant panda”	Extrapyramidal and behavioural symptoms Kayser–Fleischer ring around the iris	ATP7B gene mutations—copper accumulation; low ceruloplasmin levels, high urine copper
Huntington disease	BL symmetric atrophy of putamen and caudate head—“boxed-out” frontal horns	BL symmetric caudate and putamen T2 hyperintensity in juvenile-onset HD; diffuse atrophy, primarily frontal, in advanced stages	Triad of motor, cognitive and psychiatric symptoms; adult-onset HD typically hyperkinetic, juvenile form hypokinetic motor disorder	Mutant (multiple CAG repeats) huntingtin protein aggregates in axonal terminals; direct genetic test
PKAN	BL symmetric GP T2 hypointensity with central hyperintensity—“eye of the tiger” sign	Generalised atrophy	Progressive dystonia, spasticity, dysarthria and vision loss	Two PANK2 gene mutations
Carbon monoxide	Globus pallidus and cerebral WM BL focal T2 hyperintense lesions, reduced diffusivity	BL cerebellar, hippocampal and other deep GM lesions; haemorrhage; cerebral WM reduced diffusivity with delayed leukoencephalopathy	Nausea, headache and dizziness to confusion and loss of consciousness; delayed leukoencephalopathy days to weeks later	Elevated blood levels of carboxyhaemoglobin (HbCO)
Bilirubin encephalopathy	BL symmetric GP and subthalamic nucleus T2 hyperintensity—chronic; BL symmetric GP and subthalamic nucleus T1 hyperintensity—acute	BL symmetric substantia nigra and cerebellar nuclei T2 hyperintensity in chronic phase	Infants with severe jaundice, poor feeding, lethargy, hypertonia or hypotonia, apnea	Very high bilirubin blood levels
Chronic hepatic encephalopathy/-manganese toxicity	BL symmetric GP T1 hyperintensity	BL symmetric dentate nucleus, substantia nigra, subthalamic nucleus and tectum T1 hyperintensity; corticospinal tracts T2 hyperintensity	Neuropsychiatric abnormalities in the setting of cirrhosis and portal hypertension or portal-systemic shunts	Elevated serum ammonia levels High levels of manganese
Methanol	BL symmetric (dorsolateral) putamen and fronto-insular WM T2 hyperintensity; haemorrhage and reduced diffusivity	BL involvement of other basal ganglia, including isolated GP; (peripheral) contrast enhancement	Acute visual disturbances followed by headache, nausea, fatigue, abdominal pain; seizures and coma	Severe metabolic acidosis with high anion gap and increased osmolal gap
Uremic encephalopathy/-metabolic acidosis	BL symmetric putamen and GP T2 hyperintense swelling with even higher signal of the rim and	Increased diffusivity along “the fork”; central areas of reduced diffusivity; caudate may be involved	Nausea, vomiting, fatigue, anorexia, muscle cramps, pruritus, mental status	Very low glomerular filtration rate and creatinine clearance

Table 1 (continued)

Deep grey matter lesions	Imaging findings		Clinical findings	Biochemistry
	Characteristic	Common or possible		
Hypoglycaemia	medullary laminae—“lentiform fork” sign BL symmetric BG and diffuse cortical GM reduced diffusivity and/or WM—posterior limb of internal capsule and splenium of corpus callosum	BL subcortical WM; UL lesions BL occipito-parietal GM and WM in neonates	changes; most commonly in end-stage renal disease Anxiety, dysarthria, confusion, loss of consciousness, seizures, coma; may simulate stroke	(generally under 10–15 mL/min) Very low plasma glucose concentration
Hyperglycaemia	UL putamen (+/- caudate and GP) CT hyperdensity and T1 hyperintensity	Asymmetric in very rare BL cases	Hemichorea-hemiballismus (continuous irregular and involuntary jerky movements on one side) in patients with poorly controlled diabetes mellitus	Elevated blood glucose level and glycosylated haemoglobin (HbA1c)
Autoimmune encephalitis	BL putamen and caudate T2 hyperintensity	Involvement of BL hippocampi and other limbic structures	Chorea and behavioural disorders	Anti-CV2/CRMP5 antibodies (or other antibodies against neuronal antigens)
Cryptococcosis	BL scattered focal CSF-like T2 hyperintense BG lesions, some of which enhance with contrast	Surrounding oedema; lesions in adjacent areas; ventriculomegaly	Usually insidious onset in HIV-positive and other immunosuppressed patients with headache, fever and malaise	Serum or CSF cryptococcal polysaccharide antigen (CrAg); CSF or blood culture
Germinoma	UL or BL asymmetric GP and putamen SW-MRI or T2* hypointense lesions; ipsilateral hemiatrophy in UL cases	Cysts, calcification, haemorrhage, mass effect; subtle CT hyperdensity, T1 and T2 hyperintensity	Slowly progressive hemiparesis, psychosis and cognitive decline in the second decade of life	Elevated human chorionic gonadotropin (hCG) in some cases
b. Predominantly involving the thalami				
Gangliosidosis (GM1 and GM2)	BL symmetric thalamus T2 hypointensity and T1 hyperintensity, CT hyperdensity (infantile form, also other lysosomal storage diseases); cerebellar atrophy (adult and juvenile forms)	BL symmetric putamen and caudate mild T2 hyperintensity, diffuse hypomyelination with sparing of corpus callosum	Rapidly evolving motor weakness, developmental delay, deafness and blindness (infantile form); motor disturbances and intellectual disabilities (adult and juvenile forms)	Measurement of lysosomal enzyme activity in blood samples; detection of genetic mutations
Toluene toxicity	BL symmetric thalamus T2 hypointensity, BL WM T2 hyperintensity, loss of WM–GM differentiation, global atrophy	BL basal ganglia and cortex T2 hypointensity	Insomnia, cerebellar dysfunction, secondary Parkinsonism, visual and hearing loss, attention deficit, memory dysfunctions and visuospatial impairment, dementia	No definite laboratory test Liver enzymes may be elevated; urinary metabolite (hippuric acid) with a high level of chronic use
Wernicke encephalopathy	BL symmetric dorsomedial thalamus, periaqueductal GM and mammillary body T2 hyperintensity, best seen on FLAIR and DWI	Contrast enhancement may be present; BL symmetric perirolandic cortex and cranial nerve nuclei T2 and DWI hyperintensity (non-alcoholic WE)	Classic triad: confusion, ataxia and ophthalmoplegia; nystagmus, delirium, hypotension Malnutrition—alcoholic and non-alcoholic	No definite laboratory test; frequent lactic acidosis
Acute hyperammonaemic encephalopathy	BL symmetric cortical GM of insula and cingulate gyrus T2 hyperintensity, best seen on FLAIR and DWI	BL symmetric thalamus T2 hyperintensity; reduced diffusivity may be present	Progressive drowsiness and seizures; liver disease, other conditions causing increased ammonia	Elevated serum ammonia level; serum amino acid levels, urinary tests and

Table 1 (continued)

Deep grey matter lesions	Imaging findings		Clinical findings	Biochemistry
	Characteristic	Common or possible		
Acute necrotising encephalopathy	BL symmetric thalamus concentric haemorrhagic lesions (SW-MRI/T2*), centrally low and peripherally increased diffusivity	Brainstem lesion (even without thalamic involvement), subinsular areas, cerebellum and BG	production or decreased elimination, including urea cycle defects (in paediatric patients) Respiratory viral infection followed by acute encephalopathy with seizures and rapid alteration of consciousness, mostly in young children; also recurrent and familial forms	DNA mutation analysis for urea cycle defects No specific laboratory test; usually elevated CSF protein, serum transaminase levels; mutations in RANBP2 gene (recurrent and familial forms)
Artery of Percheron infarction	BL paramedian thalamus focal infarcts—CT hypodensity, reduced diffusivity, T2 hyperintensity	Midbrain involvement: “midbrain V” sign—high signal on FLAIR extends BL along the interpeduncular cistern	Acute visual disturbances, confusion and coma Predominantly cardioembolic stroke	No specific laboratory test
Deep cerebral venous thrombosis	BL usually asymmetric thalamus swelling—T2 hyperintense and CT hypodense, frequent haemorrhage; CT hyperdense deep venous structures	BL symmetric or strikingly asymmetric (almost UL); BG, internal capsule, midbrain, upper cerebellum involvement	Acute to chronic headache, intracranial hypertension, focal neurological deficits, seizures, encephalopathy Predominantly in young women	Hypercoagulable panel, evaluation of risk factors
Dural arterio-venous fistula	BL thalamus mild swelling, T2 hyperintensity and increased diffusivity; dAVF diagnosed on DSA	Microbleeds may be present on SW-MRI; BL thalamus mild CT hypodensity; possible signs of dAVF on CTA and MRI	Rapidly progressive dementia	No specific laboratory test
Diffuse midline glioma/thalamic glioma	UL or BL thalamus, sometimes symmetric; prominent mass effect, T2 hyperintensity	Variable contrast enhancement, variable diffusivity	Headache and vomiting (hydrocephalus), motor deficits, confusion	Mutations in EGFR oncogene (BL thalamic glioma); H3K27M mutation (UL glioma)
PCNSL	BL or UL periventricular (medial thalami); CT hyperdense, T2 hypo-/isointense lesions with low diffusivity and homogeneous enhancement	Solitary or multiple well-defined masses with marked surrounding vasogenic oedema, subependymal spread	Cognitive decline, personality changes, confusion, focal neurological deficits, headache, nausea and vomiting	No definitive laboratory test; CSF cytology and flow cytology may be positive
c. Involving both the basal ganglia and the thalami				
Tubulinopathies	BL fused malformed BG; BL hypertrophic thalamus; hypoplasia of anterior internal capsule	Brainstem hypoplasia; various cerebellar, cortical GM and corpus callosum malformations	Wide spectrum of clinical severity—microcephaly, developmental delay and epilepsy	Detection of genetic mutations
NF-1 FASI	BL asymmetric BG, thalamus, brainstem and cerebellum patchy ill-defined T2 hyperintensities without mass effect	Mild T1 hyperintensity; minimal mass effect; rare contrast enhancement	Incidental findings—frequently regress, may reappear, in patients with symptoms and signs related to NF-1	Detection of genetic mutations
Primary familial brain calcifications	BL BG, thalamus (posterolateral), dentate nucleus, subcortical WM calcification on CT;	Calcifications in cerebral cortex, cerebellar cortex and brainstem; confluent	Abnormal movements, cognitive and psychiatric manifestations with insidious onset	Detection of genetic mutations; exclusion of other disorders

Table 1 (continued)

Deep grey matter lesions	Imaging findings		Clinical findings	Biochemistry
	Characteristic	Common or possible		
Ethylene glycol intoxication	MRI-SW/T2*/T2 hypointense, T1 hyperintense to hypointense BL symmetric central deep brain (BG, thalamus, hippocampi, amygdala, dorsal brainstem) T2 hyperintensity	white matter abnormalities BL symmetric central deep brain CT hypodensity; involvement of insulae and cerebellum; mild mass effect; haemorrhage	Initial inebriation is followed by congestive heart failure and then severe acute kidney failure	Metabolic acidosis with high anion gap and osmolal gap, hypocalcaemia
ODS—CPM and EPM	CPM: central pons with sparing of corticospinal tracts EPM: BL symmetric putamen, caudate, thalamus, external and extreme capsule—T2 hyperintensity and T1 hypointensity; CT hypodensity	Reduced diffusivity in the early phase; hippocampus, cerebellum and cerebral cortex may be involved; EPM may precede CPM on imaging studies	Neurocognitive changes (delirium), lethargy, quadriparesis, following swift adjustment of hyponatraemia (and other electrolyte abnormalities—chronically debilitated patients)	Initial serum hyponatraemia (or other electrolyte abnormality) that was then rapidly corrected
Vigabatrin-associated MRI changes	BL symmetric thalamus T2 hyperintensity and reduced diffusivity	BL symmetric involvement of GP, brainstem tegmentum and cerebellar dentate nucleus	An incidental reversible finding in around 25% of treated infants; hyperkinetic movement disorders and acute encephalopathy in very rare cases	No specific laboratory test; associated with peak vigabatrin dosage
Parathyroid hormone disturbances	BL symmetric BG calcifications on CT; MRI-SW/T2*/T2 hypointense, T1 hyperintense to hypointense	BL calcifications in thalamus, subcortical WM, dentate nucleus, cerebral cortex, hippocampus and cerebellar WM; dural and vascular calcifications	An incidental finding, symptoms and signs from the underlying condition (hypoparathyroidism and pseudohypoparathyroidism)	Serum levels of parathyroid hormone, calcium, phosphorus, magnesium, calcitonin
CJD	BL or UL putamen and caudate as well as cortical GM (“cortical ribboning”) hyperintensity on DWI and FLAIR images, without thickening or oedema	Involvement of dorsomedial thalami—“hockey stick” sign or posterior thalami—“pulvinar” sign; reduced diffusivity	Rapidly progressive dementia and myoclonus, akinetic mutism, visual signs, extrapyramidal signs	CSF RT-QuIC (real-time quaking-induced conversion of normal prion protein), 14-3-3 CSF assay
ADEM	BL asymmetric thalamus and/or BG ill-defined T2 hyperintense lesions, along with patchy T2 hyperintense cerebral WM lesions	Variable contrast enhancement; central elongated spinal cord lesions; diffusivity increased, peripherally low; AHM: haemorrhagic foci	Abrupt encephalopathy, often following an infection, in paediatric patients—fever, headache, nausea and vomiting, confusion, vision impairment, drowsiness, seizures	No specific laboratory test; MOG antibodies may be present
Viral encephalitis	BL asymmetric thalamus and/or BG signal alterations with mild mass effect, frequently also cortical GM—CT hypodense, T2 hyperintense; reduced diffusivity (at least in some parts)	Spinal cord and cauda equina involvement; variable contrast enhancement; haemorrhage	Headache, fever, confusion, seizures, flu-like symptoms, nausea and vomiting, numbness, weakness	Detection of serum antibodies for some viruses, detection of viral RNA or DNA by PCR
Cerebral toxoplasmosis	Scattered deep GM CT hypodense enhancing lesions with surrounding	Corticomedullary junction lesions; solitary lesion;	Headache, fever, altered mental status in AIDS and other	Detection of serum antibodies; very low CD4 count

Table 1 (continued)

Deep grey matter lesions	Imaging findings		Clinical findings	Biochemistry
	Characteristic	Common or possible		
	vasogenic oedema; “concentric target” sign: alternating dark and bright layers on T2w/FLAIR images; “eccentric target” sign: ring enhancement with eccentric nodule; decreased rCBV	high diffusivity of the lesions	immunocompromised patients; in utero infection	
Hypoxic–ischaemic encephalopathy	BL symmetric thalamus, BG, perirolandic cortex, hippocampus decreased diffusivity followed by T2 hyperintensity and CT hypodensity; BL symmetric deep GM T1 hyperintensity, “absent PLIC” sign (neonates)	Dorsal brainstem, anterior vermis (neonates)	Perinatal asphyxia; cardiac arrest, drowning and other causes of anoxia	No specific laboratory test
Hypertensive haematoma	UL putamen or/and thalamus – Acute: haemorrhage with mass effect and surrounding hypodensity on CT – Chronic: slit-like cavities with peripheral MRI-SW/T2*/T2 hypointensity	Pons Medial cerebellum BL lesions	Sudden onset altered mental status, speech disorders, weakness, numbness, visual disturbances; acute hypertension	No specific laboratory test
PRES	BL near-symmetric to asymmetric posterior cerebral subcortical T2 hyperintensity and increased diffusivity	BL BG, thalamus and anterior frontal involvement; contrast enhancement; low diffusivity—indicative of infarction; “central variant”: predominant brainstem and BG involvement, also thalamus and periventricular WM	Headache, altered mental status, seizures, visual disturbances, nausea/vomiting, focal deficits; associated conditions: acute hypertension (including eclampsia), sepsis, immunosuppressant drugs, chemotherapy	No specific laboratory test

BL bilateral, WM white matter, WD Wilson disease, GP globus pallidus, HD Huntington disease, PKAN pantothenate kinase-associated neurodegeneration, GM grey matter, UL unilateral, CSF cerebrospinal fluid, anti-CV2/CRMP5 collapsin response mediator protein 5, BG basal ganglia, SWI-MR susceptibility-weighted magnetic resonance imaging, HIV human immunodeficiency virus, CT computer tomography, DWI diffusion-weighted imaging, FLAIR fluid-attenuated inversion recovery, dAVF dural arterio-venous fistula, PCNSL primary central nervous system lymphoma, NF-1 neurofibromatosis type 1, ODS osmotic demyelination syndrome, CPM central pontine myelinolysis, EPM extrapontine myelinolysis, MRI magnetic resonance imaging, CJD Creutzfeldt–Jakob disease, ADEM acute disseminated/demyelinating encephalomyelitis, AHM acute haemorrhagic encephalomyelitis, MOG myelin oligodendrocyte glycoprotein, RNA ribonucleic acid, DNA deoxyribonucleic acid, PCR polymerase chain reaction, rCBV relative cerebral blood volume, AIDS acquired immunodeficiency syndrome, PLIC posterior limb of the internal capsule, PRES posterior reversible encephalopathy syndrome

disruption of cerebral vascular autoregulation is the cornerstone of the pathophysiology, resulting in vasogenic oedema.

Typical MRI findings include patchy, near-symmetrical T2 hyperintense areas in the subcortical regions of the posterior cerebral hemispheres (Fig. 57a). The overlying cortex is frequently involved, and there may be some patchy contrast enhancement. The diffusivity is typically increased with high signal on ADC maps. In some cases, however, there are areas

with decreased diffusivity, indicating irreversible infarction (Fig. 57b). Other parts of the brain, including anterior frontal lobes and infratentorial structures, may also be affected [106, 107].

A recent review of over 550 reported cases found that the atypical locations of PRES are most commonly in the cerebellum, brainstem and deep white matter, along with the basal ganglia (in 24.3%) and thalamus (in 20.5%). The common

symptoms of such PRES include headaches, altered mental status, seizures, visual disturbances, nausea or vomiting and focal neurological deficits. The frequent predisposing factors include hypertension, renal diseases, immunosuppressant drugs and chemotherapy/chemoradiotherapy [107].

In the classic presentation of PRES, the basal ganglia are involved in only 10–20% of patients (Figs. 57 and 59). However, a “central variant” PRES shows predominant involvement of the brainstem and the basal ganglia with variable involvement of the thalami and periventricular white matter, while the parieto-occipital and posterior frontal cortico-subcortical regions are spared (Fig. 58). Differential diagnosis can be very broad because of the atypical imaging features and could include osmotic demyelination, encephalitis and demyelination [106].

Conclusion

A systematic approach combining imaging, clinical and demographic data is necessary when encountering lesions of the central grey matter on scans of the brain. Knowledge of the exact localisation of the abnormalities and the characteristic findings on various MR sequences, and occasionally on CT, allows for narrowing down the differential considerations and even establishing the final diagnosis in some cases. In addition to the findings in the basal ganglia and thalami, answers to 3 main questions are very helpful when such lesions are found on imaging studies:

- 1 Imaging—Is there involvement of additional areas of the brain? More specifically, of the following three:
 - (a) Brainstem
 - (b) Cortex
 - (c) White matter
- 2 Demographics—What is the patient’s age?
- 3 Clinical—Acute or chronic presentation?

A summary imaging overview showing the most characteristic disease patterns involving the basal ganglia and thalami discussed in this paper is provided in Fig. 59. The various disease entities are furthermore summarised in Table 1.

Author declarations Idea for this review: Zoran Rumboldt and Luc van den Hauwe.

Literature search and data analysis: Sofie Van Cauter, Mariasavina Severino, Rosamaria Ammendola, Brecht Van Berkel, Hrvoje Vavro, Luc van den Hauwe, and Zoran Rumboldt.

Drafting of the article: Sofie Van Cauter, Mariasavina Severino, and Zoran Rumboldt.

Critical revision of the manuscript: Sofie Van Cauter, Mariasavina Severino, Rosamaria Ammendola, Brecht Van Berkel, Hrvoje Vavro, Luc van den Hauwe, and Zoran Rumboldt.

Funding information No funding was received.

Compliance with ethical standards

Conflict of interest The authors declare they have no conflict of interest.

Ethical approval This review article was conducted retrospectively from data obtained for clinical purposes. We consulted extensively with the IRB of Ziekenhuis Oost-Limburg who determined that our study did not need ethical approval. An IRB official waiver of ethical approval was granted from the IRB of Ziekenhuis Oost-Limburg.

Informed consent This review article was conducted retrospectively from data obtained for clinical purposes. This article does not contain any studies with human participants performed by any of the authors.

References

1. Hoch MJ, Bruno MT, Faustin A, Cruz N, Mogilner AY, Crandall L, Wisniewski T, Devinsky O, Shepherd TM (2019) 3T MRI whole-brain microscopy discrimination of subcortical anatomy, part 2: basal forebrain. *AJNR Am J Neuroradiol* 40(7):1095–1105. <https://doi.org/10.3174/ajnr.A6088>
2. ten Donkelaar HJ, Lammens M, Akira H (2014) *Clinical neuroembryology: development and developmental disorders of the human central nervous system*. Springer, New York
3. Dixon AKB, David J., Ellis, Harold; Logan Bari M. (2015) *Brain: selected images*. In: *Human sectional anatomy: atlas of body sections, CT and MRI images*, fourth edition. CRC
4. Adams LC, Bressemer K, Boker SM, Bender YY, Norenberg D, Hamm B, Makowski MR (2017) Diagnostic performance of susceptibility-weighted magnetic resonance imaging for the detection of calcifications: a systematic review and meta-analysis. *Sci Rep* 7(1):15506. <https://doi.org/10.1038/s41598-017-15860-1>
5. Henkelman RM, Watts JF, Kucharczyk W (1991) High signal intensity in MR images of calcified brain tissue. *Radiology* 179(1):199–206. <https://doi.org/10.1148/radiology.179.1.1848714>
6. Tullo S, Patel R, Devenyi GA, Salaciak A, Bedford SA, Farzin S, Wlodarski N, Tardif CL, Group P-AR, JCS B, Chakravarty MM (2019) MR-based age-related effects on the striatum, globus pallidus, and thalamus in healthy individuals across the adult lifespan. *Hum Brain Mapp* 40(18):5269–5288. <https://doi.org/10.1002/hbm.24771>
7. Baertling F, Rodenburg RJ, Schaper J, Smeitink JA, Koopman WJ, Mayatepek E, Morava E, Distelmaier F (2014) A guide to diagnosis and treatment of Leigh syndrome. *J Neurol Neurosurg Psychiatry* 85(3):257–265. <https://doi.org/10.1136/jnnp-2012-304426>
8. Arii J, Tanabe Y (2000) Leigh syndrome: serial MR imaging and clinical follow-up. *AJNR Am J Neuroradiol* 21(8):1502–1509
9. Kolker S, Christensen E, Leonard JV, Greenberg CR, Boneh A, Burlina AB, Burlina AP, Dixon M, Duran M, Garcia Cazorla A, Goodman SI, Koeller DM, Kyllerman M, Muhlhausen C, Muller E, Okun JG, Wilcken B, Hoffmann GF, Burgard P (2011) Diagnosis and management of glutaric aciduria type I—revised

- recommendations. *J Inher Metab Dis* 34(3):677–694. <https://doi.org/10.1007/s10545-011-9289-5>
10. Nunes J, Loureiro S, Carvalho S, Pais RP, Alfaiate C, Faria A, Garcia P, Diogo L (2013) Brain MRI findings as an important diagnostic clue in glutaric aciduria type 1. *Neuroradiol J* 26(2):155–161. <https://doi.org/10.1177/197140091302600204>
 11. Christian CW, States LJ (2017) Medical mimics of child abuse. *AJR Am J Roentgenol* 208(5):982–990. <https://doi.org/10.2214/AJR.16.17450>
 12. Ranjan A, Kalita J, Kumar S, Bhoi SK, Misra UK (2015) A study of MRI changes in Wilson disease and its correlation with clinical features and outcome. *Clin Neurol Neurosurg* 138:31–36. <https://doi.org/10.1016/j.clineuro.2015.07.013>
 13. Kim TJ, Kim IO, Kim WS, Cheon JE, Moon SG, Kwon JW, Seo JK, Yeon KM (2006) MR imaging of the brain in Wilson disease of childhood: findings before and after treatment with clinical correlation. *AJNR Am J Neuroradiol* 27(6):1373–1378
 14. Sinha S, Taly AB, Ravishankar S, Prashanth LK, Venugopal KS, Arunodaya GR, Vasudev MK, Swamy HS (2006) Wilson's disease: cranial MRI observations and clinical correlation. *Neuroradiology* 48(9):613–621. <https://doi.org/10.1007/s00234-006-0101-4>
 15. Scahill RI, Andre R, Tabrizi SJ, Aylward EH (2017) Structural imaging in premanifest and manifest Huntington disease. *Handb Clin Neurol* 144:247–261. <https://doi.org/10.1016/B978-0-12-801893-4.00020-1>
 16. Hobbs NZ, Barnes J, Frost C, Henley SM, Wild EJ, Macdonald K, Barker RA, Scahill RI, Fox NC, Tabrizi SJ (2010) Onset and progression of pathologic atrophy in Huntington disease: a longitudinal MR imaging study. *AJNR Am J Neuroradiol* 31(6):1036–1041. <https://doi.org/10.3174/ajnr.A2018>
 17. Amaral LL, Gaddikeri S, Chapman PR, Roy R, Gaddikeri RS, Marussi VH, Bag AK (2015) Neurodegeneration with brain iron accumulation: clinico-radiological approach to diagnosis. *J Neuroimaging* 25(4):539–551. <https://doi.org/10.1111/jon.12195>
 18. McNeill A, Birchall D, Hayflick SJ, Gregory A, Schenk JF, Zimmerman EA, Shang H, Miyajima H, Chinnery PF (2008) T2* and FSE MRI distinguishes four subtypes of neurodegeneration with brain iron accumulation. *Neurology* 70(18):1614–1619. <https://doi.org/10.1212/01.wnl.0000310985.40011.d6>
 19. Beppu T (2013) The role of MR imaging in assessment of brain damage from carbon monoxide poisoning: a review of the literature. *Am J Neuroradiol* 35(4):625–631. <https://doi.org/10.3174/ajnr.A3489>
 20. Jeon SB, Sohn CH, Seo DW, Oh BJ, Lim KS, Kang DW, Kim WY (2018) Acute brain lesions on magnetic resonance imaging and delayed neurological sequelae in carbon monoxide poisoning. *JAMA Neurol* 75(4):436–443. <https://doi.org/10.1001/jamaneurol.2017.4618>
 21. Wisnowski JL, Panigrahy A, Painter MJ, Watchko JF (2014) Magnetic resonance imaging of bilirubin encephalopathy: current limitations and future promise. *Semin Perinatol* 38(7):422–428. <https://doi.org/10.1053/j.semperi.2014.08.005>
 22. Rovira A, Alonso J, Cordoba J (2008) MR imaging findings in hepatic encephalopathy. *AJNR Am J Neuroradiol* 29(9):1612–1621. <https://doi.org/10.3174/ajnr.A1139>
 23. Choi JW, Moon WJ (2019) Gadolinium deposition in the brain: current updates. *Korean J Radiol* 20(1):134–147. <https://doi.org/10.3348/kjr.2018.0356>
 24. Gulani V, Calamante F, Shellock FG, Kanal E, Reeder SB, International Society for Magnetic Resonance in M (2017) Gadolinium deposition in the brain: summary of evidence and recommendations. *Lancet Neurol* 16(7):564–570. [https://doi.org/10.1016/S1474-4422\(17\)30158-8](https://doi.org/10.1016/S1474-4422(17)30158-8)
 25. Zakharov S, Kotikova K, Vaneckova M, Seidl Z, Nurieva O, Navratil T, Caganova B, Pelclova D (2016) Acute methanol poisoning: prevalence and predisposing factors of haemorrhagic and non-haemorrhagic brain lesions. *Basic Clin Pharmacol Toxicol* 119(2):228–238. <https://doi.org/10.1111/bcpt.12559>
 26. Taheri MS, Moghaddam HH, Moharamzad Y, Dadgari S, Nahvi V (2010) The value of brain CT findings in acute methanol toxicity. *Eur J Radiol* 73(2):211–214. <https://doi.org/10.1016/j.ejrad.2008.11.006>
 27. Kumar G, Goyal MK (2010) Lentiform fork sign: a unique MRI picture. Is metabolic acidosis responsible? *Clin Neurol Neurosurg* 112(9):805–812. <https://doi.org/10.1016/j.clineuro.2010.06.006>
 28. Kim DM, Lee IH, Song CJ (2016) Uremic encephalopathy: MR imaging findings and clinical correlation. *AJNR Am J Neuroradiol* 37(9):1604–1609. <https://doi.org/10.3174/ajnr.A4776>
 29. Bathla G, Policeni B, Agarwal A (2014) Neuroimaging in patients with abnormal blood glucose levels. *AJNR Am J Neuroradiol* 35(5):833–840. <https://doi.org/10.3174/ajnr.A3486>
 30. Wong DS, Poskitt KJ, Chau V, Miller SP, Roland E, Hill A, Tam EW (2013) Brain injury patterns in hypoglycemia in neonatal encephalopathy. *AJNR Am J Neuroradiol* 34(7):1456–1461. <https://doi.org/10.3174/ajnr.A3423>
 31. Aquino JH, Spitz M, Pereira JS (2015) Hemichorea-hemiballismus as the first sign of type 1b diabetes during adolescence and its recurrence in the setting of infection. *J Child Neurol* 30(10):1362–1365. <https://doi.org/10.1177/0883073814553972>
 32. Oh SH, Lee KY, Im JH, Lee MS (2002) Chorea associated with non-ketotic hyperglycemia and hyperintensity basal ganglia lesion on T1-weighted brain MRI study: a meta-analysis of 53 cases including four present cases. *J Neurol Sci* 200(1–2):57–62. [https://doi.org/10.1016/s0022-510x\(02\)00133-8](https://doi.org/10.1016/s0022-510x(02)00133-8)
 33. Kelley BP, Patel SC, Marin HL, Corrigan JJ, Mitsias PD, Griffith B (2017) Autoimmune encephalitis: pathophysiology and imaging review of an overlooked diagnosis. *AJNR Am J Neuroradiol* 38(6):1070–1078. <https://doi.org/10.3174/ajnr.A5086>
 34. Crespo-Burillo JA, Hernando-Quintana N, Ruiz-Palomino P, Martin-Martinez J (2015) Chorea secondary to striatal encephalitis due to anti-CV2/CRMP5 antibodies. Case description and review of the literature. *Neurologia* 30(7):451–453. <https://doi.org/10.1016/j.nrl.2013.10.007>
 35. da Rocha AJ, Nunes RH, Maia AC Jr, do Amaral LL (2015) Recognizing autoimmune-mediated encephalitis in the differential diagnosis of limbic disorders. *AJNR Am J Neuroradiol* 36(12):2196–2205. <https://doi.org/10.3174/ajnr.A4408>
 36. Charlier C, Dromer F, Leveque C, Chartier L, Cordoliani YS, Fontanet A, Launay O, Lortholary O, French Cryptococcosis Study G (2008) Cryptococcal neuroradiological lesions correlate with severity during cryptococcal meningoencephalitis in HIV-positive patients in the HAART era. *PLoS One* 3(4):e1950. <https://doi.org/10.1371/journal.pone.0001950>
 37. Corti M, Villafane MF, Negroni R, Arechavala A, Maiolo E (2008) Magnetic resonance imaging findings in AIDS patients with central nervous system cryptococcosis. *Rev Iberoam Micol* 25(4):211–214. [https://doi.org/10.1016/s1130-1406\(08\)70051-2](https://doi.org/10.1016/s1130-1406(08)70051-2)
 38. Zhong Y, Zhou Z, Fang X, Peng F, Zhang W (2017) Magnetic resonance imaging study of cryptococcal neuroradiological lesions in HIV-negative cryptococcal meningitis. *Eur J Clin Microbiol Infect Dis* 36(8):1367–1372. <https://doi.org/10.1007/s10096-017-2941-8>
 39. Lou X, Ma L, Wang FL, Tang ZP, Huang H, Cai YQ, Wong EH (2009) Susceptibility-weighted imaging in the diagnosis of early basal ganglia germinoma. *AJNR Am J Neuroradiol* 30(9):1694–1699. <https://doi.org/10.3174/ajnr.A1696>
 40. Phi JH, Cho BK, Kim SK, Paeng JC, Kim IO, Kim IH, Kim DG, Jung HW, Kim JE, Wang KC (2010) Germinomas in the basal ganglia: magnetic resonance imaging classification and the

- prognosis. *J Neuro-Oncol* 99(2):227–236. <https://doi.org/10.1007/s11060-010-0119-7>
41. Patterson MC (2013) Gangliosidoses. *Handb Clin Neurol* 113:1707–1708. <https://doi.org/10.1016/B978-0-444-59565-2.00039-3>
 42. Gururaj A, Sztrihai L, Hertecant J, Johansen JG, Georgiou T, Campos Y, Drousiotou A, d’Azzo A (2005) Magnetic resonance imaging findings and novel mutations in GM1 gangliosidosis. *J Child Neurol* 20(1):57–60. <https://doi.org/10.1177/08830738050200010901>
 43. Steenweg ME, Vanderver A, Blaser S, Bizzi A, de Koning TJ, Mancini GM, van Wieringen WN, Barkhof F, Wolf NI, van der Knaap MS (2010) Magnetic resonance imaging pattern recognition in hypomyelinating disorders. *Brain* 133(10):2971–2982. <https://doi.org/10.1093/brain/awq257>
 44. Autti T, Joensuu R, Aberg L (2007) Decreased T2 signal in the thalami may be a sign of lysosomal storage disease. *Neuroradiology* 49(7):571–578. <https://doi.org/10.1007/s00234-007-0220-6>
 45. Kumar D, Ramanathan S, Khanna M, Palaniappan Y (2014) Bithalamic T2 hypointensity: a diagnostic clue for Sandhoff’s disease. *Neurol India* 62(4):481–482. <https://doi.org/10.4103/0028-3886.141311>
 46. Cocozza S, Russo C, Pontillo G, Pisani A, Brunetti A (2018) Neuroimaging in Fabry disease: current knowledge and future directions. *Insights Imaging* 9(6):1077–1088. <https://doi.org/10.1007/s13244-018-0664-8>
 47. Aydin K, Sencer S, Demir T, Ogel K, Tunaci A, Minareci O (2002) Cranial MR findings in chronic toluene abuse by inhalation. *AJNR Am J Neuroradiol* 23(7):1173–1179
 48. Zuccoli G, Santa Cruz D, Bertolini M, Rovira A, Gallucci M, Carollo C, Pipitone N (2009) MR imaging findings in 56 patients with Wernicke encephalopathy: nonalcoholics may differ from alcoholics. *AJNR Am J Neuroradiol* 30(1):171–176. <https://doi.org/10.3174/ajnr.A1280>
 49. Manzo G, De Gennaro A, Cozzolino A, Serino A, Fenza G, Manto A (2014) MR imaging findings in alcoholic and nonalcoholic acute Wernicke’s encephalopathy: a review. *Biomed Res Int* 2014:503596–503512. <https://doi.org/10.1155/2014/503596>
 50. Mach JC, Russell J (2020) A combined case of Wernicke and metronidazole induced encephalopathy? Overlapping pathophysiologic pathways and MR imaging features. *Clin Neurol Neurosurg* 196:106034. <https://doi.org/10.1016/j.clineuro.2020.106034>
 51. Kim E, Na DG, Kim EY, Kim JH, Son KR, Chang KH (2007) MR imaging of metronidazole-induced encephalopathy: lesion distribution and diffusion-weighted imaging findings. *AJNR Am J Neuroradiol* 28(9):1652–1658. <https://doi.org/10.3174/ajnr.A0655>
 52. U-King-Im JM, Yu E, Bartlett E, Soobrah R, Kucharczyk W (2011) Acute hyperammonemic encephalopathy in adults: imaging findings. *AJNR Am J Neuroradiol* 32(2):413–418. <https://doi.org/10.3174/ajnr.A2290>
 53. Reis E, Coolen T, Lolli V (2020) MRI findings in acute hyperammonemic encephalopathy: three cases of different etiologies: teaching point: to recognize MRI findings in acute hyperammonemic encephalopathy. *J Belg Soc Radiol* 104(1):9. <https://doi.org/10.5334/jbsr.2017>
 54. Wu X, Wu W, Pan W, Wu L, Liu K, Zhang HL (2015) Acute necrotizing encephalopathy: an underrecognized clinicoradiologic disorder. *Mediat Inflamm* 2015:792578–792510. <https://doi.org/10.1155/2015/792578>
 55. Poyiadji N, Shahin G, Noujaim D, Stone M, Patel S, Griffith B (2020) COVID-19-associated acute hemorrhagic necrotizing encephalopathy: CT and MRI features. *Radiology* 296(2):E119–E120. <https://doi.org/10.1148/radiol.2020201187>
 56. Varatharaj A, Thomas N, Ellul MA, Davies NWS, Pollak TA, Tenorio EL, Sultan M, Easton A, Breen G, Zandi M, Coles JP, Manji H, Al-Shahi Salman R, Menon DK, Nicholson TR, Benjamin LA, Carson A, Smith C, Turner MR, Solomon T, Kneen R, Pett SL, Galea I, Thomas RH, Michael BD, CoroNerve Study G (2020) Neurological and neuropsychiatric complications of COVID-19 in 153 patients: a UK-wide surveillance study. *Lancet Psychiatry* doi:[https://doi.org/10.1016/S2215-0366\(20\)30287-X](https://doi.org/10.1016/S2215-0366(20)30287-X)
 57. Arauz A, Patino-Rodriguez HM, Vargas-Gonzalez JC, Arguelles-Morales N, Silos H, Ruiz-Franco A, Ochoa MA (2014) Clinical spectrum of artery of Percheron infarct: clinical-radiological correlations. *J Stroke Cerebrovasc Dis* 23(5):1083–1088. <https://doi.org/10.1016/j.jstrokecerebrovasdis.2013.09.011>
 58. Lazzaro NA, Wright B, Castillo M, Fischbein NJ, Glastonbury CM, Hildenbrand PG, Wiggins RH, Quigley EP, Osborn AG (2010) Artery of Percheron infarction: imaging patterns and clinical spectrum. *AJNR Am J Neuroradiol* 31(7):1283–1289. <https://doi.org/10.3174/ajnr.A2044>
 59. Linn J, Pfefferkom T, Ivanicova K, Muller-Schunk S, Hartz S, Wiesmann M, Dichgans M, Bruckmann H (2009) Noncontrast CT in deep cerebral venous thrombosis and sinus thrombosis: comparison of its diagnostic value for both entities. *AJNR Am J Neuroradiol* 30(4):728–735. <https://doi.org/10.3174/ajnr.A1451>
 60. Chen XY, Wang Q, Wang X, Wong KS (2017) Clinical features of thalamic stroke. *Curr Treat Options Neurol* 19(2):5. <https://doi.org/10.1007/s11940-017-0441-x>
 61. Holekamp TF, Mollman ME, Murphy RK, Kolar GR, Kramer NM, Derdeyn CP, Moran CJ, Perrin RJ, Rich KM, Lanzino G, Zipfel GJ (2016) Dural arteriovenous fistula-induced thalamic dementia: report of 4 cases. *J Neurosurg* 124(6):1752–1765. <https://doi.org/10.3171/2015.5.JNS15473>
 62. Louis DN, Perry A, Reifenberger G, von Deimling A, Figarella-Branger D, Cavenee WK, Ohgaki H, Wiestler OD, Kleihues P, Ellison DW (2016) The 2016 World Health Organization classification of tumors of the central nervous system: a summary. *Acta Neuropathol* 131(6):803–820. <https://doi.org/10.1007/s00401-016-1545-1>
 63. Kleinschmidt-DeMasters BK, Mulcahy Levy JM (2018) H3 K27M-mutant gliomas in adults vs. children share similar histological features and adverse prognosis. *Clin Neuropathol* 37(2):53–63. <https://doi.org/10.5414/NP301085>
 64. Mondal G, Lee JC, Ravindranathan A, Villanueva-Meyer JE, Tran QT, Allen SJ, Barreto J, Gupta R, Doo P, Van Ziffle J, Onodera C, Devine P, Grenert JP, Samuel D, Li R, Metrock LK, Jin LW, Antony R, Alashari M, Cheshier S, Whipple NS, Bruggers C, Raffel C, Gupta N, Kline CN, Reddy A, Banerjee A, Hall MD, Mehta MP, Khatib Z, Maher OM, Brathwaite C, Pekmezci M, Phillips JJ, Bollen AW, Tihan T, Lucas JT Jr, Broniscer A, Berger MS, Perry A, Orr BA, Solomon DA (2020) Pediatric bithalamic gliomas have a distinct epigenetic signature and frequent EGFR exon 20 insertions resulting in potential sensitivity to targeted kinase inhibition. *Acta Neuropathol* 139:1071–1088. <https://doi.org/10.1007/s00401-020-02155-5>
 65. Lolli V, Tampieri D, Melancon D, Delpilar Cortes M (2010) Imaging in primary central nervous system lymphoma. *Neuroradiol J* 23(6):680–689. <https://doi.org/10.1177/197140091002300606>
 66. Guo R, Zhang X, Niu C, Xi Y, Yin H, Lin H, Chang T (2019) Primary central nervous system small lymphocytic lymphoma in the bilateral ventricles: two case reports. *BMC Neurol* 19(1):200. <https://doi.org/10.1186/s12883-019-1430-3>
 67. Yap KK, Sutherland T, Liew E, Tartaglia CJ, Pang M, Trost N (2012) Magnetic resonance features of primary central nervous system lymphoma in the immunocompetent patient: a pictorial

- essay. *J Med Imaging Radiat Oncol* 56(2):179–186. <https://doi.org/10.1111/j.1754-9485.2012.02345.x>
68. Amrom D, Tanyalcin I, Verhelst H, Deconinck N, Brouhard GJ, Decarie JC, Vanderhasselt T, Das S, Hamdan FF, Lissens W, Michaud JL, Jansen AC (2014) Polymicrogyria with dysmorphic basal ganglia? Think tubulin! *Clin Genet* 85(2):178–183. <https://doi.org/10.1111/cge.12141>
 69. Bahi-Buisson N, Poirier K, Fourniol F, Saillour Y, Valence S, Lebrun N, Hully M, Bianco CF, Boddaert N, Elie C, Lascelles K, Souville I, Consortium LI-T, Beldjord C, Chelly J (2014) The wide spectrum of tubulinopathies: what are the key features for the diagnosis? *Brain* 137(Pt 6):1676–1700. <https://doi.org/10.1093/brain/awu082>
 70. Petrak B, Lisy J, Kraus J, Kyncl M, Zatrava T (2008) Focal areas of high-signal intensity on brain T2-weighted magnetic resonance imaging scans are significant for the diagnosis of neurofibromatosis Von Recklinghausen type 1. *Pediatrics* 121(Supplement 2):S147. <https://doi.org/10.1542/peds.2007-2022CCCCC>
 71. Salman MS, Hossain S, Gorun S, Alqublan L, Bunge M, Rozovsky K (2018) Cerebellar radiological abnormalities in children with neurofibromatosis type 1: part 2 - a neuroimaging natural history study with clinical correlations. *Cerebellum Ataxias* 5:13. <https://doi.org/10.1186/s40673-018-0092-z>
 72. Friedrich RE, Nuding MA (2016) Optic pathway glioma and cerebral focal abnormal signal intensity in patients with neurofibromatosis type 1: characteristics, treatment choices and follow-up in 134 affected individuals and a brief review of the literature. *Anticancer Res* 36(8):4095–4121
 73. Manyam BV (2005) What is and what is not ‘Fahr’s disease’. *Parkinsonism Relat Disord* 11(2):73–80. <https://doi.org/10.1016/j.parkreldis.2004.12.001>
 74. Quintans B, Oliveira J, Sobrido MJ (2018) Primary familial brain calcifications. *Handb Clin Neurol* 147:307–317. <https://doi.org/10.1016/B978-0-444-63233-3.00020-8>
 75. Livingston JH, Stivaros S, Warren D, Crow YJ (2014) Intracranial calcification in childhood: a review of aetiologies and recognizable phenotypes. *Dev Med Child Neurol* 56(7):612–626. <https://doi.org/10.1111/dmcn.12359>
 76. Livingston JH, Mayer J, Jenkinson E, Kasher P, Stivaros S, Berger A, Cordelli DM, Ferreira P, Jefferson R, Kutschke G, Lundberg S, Ounap K, Prabhakar P, Soh C, Stewart H, Stone J, van der Knaap MS, van Esch H, van Mol C, Wakeling E, Whitney A, Rice GI, Crow YJ (2014) Leukoencephalopathy with calcifications and cysts: a purely neurological disorder distinct from coats plus. *Neuropediatrics* 45(3):175–182. <https://doi.org/10.1055/s-0033-1364180>
 77. Moore MM, Kanekar SG, Dhamija R (2008) Ethylene glycol toxicity: chemistry, pathogenesis, and imaging. *Radiol Case Rep* 3(1):122. <https://doi.org/10.2484/rcr.v3i1.122>
 78. Rumboldt Z, Vavro H, Spero M (2019) Exogenous toxins and CNS injuries. In: Barkhof F, Jäger R, Thumer M, Rovira A (eds) *Clinical neuroradiology*. Springer, Berlin. https://doi.org/10.1007/978-3-319-61423-6_66-1
 79. Malhotra A, Mongelluzzo G, Wu X, Durand D, Kalra VB, LeSar B, Liu R (2017) Ethylene glycol toxicity: MRI brain findings. *Clin Neuroradiol* 27(1):109–113. <https://doi.org/10.1007/s00062-016-0525-0>
 80. Boukobza M, Baud FJ, Gourlain H, Champion S, Malissin I, Megarbane B (2015) Neuroimaging findings and follow-up in two cases of severe ethylene glycol intoxication with full recovery. *J Neurol Sci* 359(1–2):343–346. <https://doi.org/10.1016/j.jns.2015.11.023>
 81. Alleman AM (2014) Osmotic demyelination syndrome: central pontine myelinolysis and extrapontine myelinolysis. *Semin Ultrasound CT MR* 35(2):153–159. <https://doi.org/10.1053/j.sult.2013.09.009>
 82. Garg P, Aggarwal A, Malhotra R, Dhall S (2019) Osmotic demyelination syndrome - evolution of extrapontine before pontine myelinolysis on magnetic resonance imaging. *J Neurosci Rural Pract* 10(1):126–135. https://doi.org/10.4103/jnpr.jnpr_240_18
 83. Hussain K, Walsh TJ, Chazen JL (2016) Brain MRI findings with vigabatrin therapy: case report and literature review. *Clin Imaging* 40(1):180–182. <https://doi.org/10.1016/j.clinimag.2015.07.016>
 84. Hussain SA, Tsao J, Li M, Schwarz MD, Zhou R, Wu JY, Salamon N, Sankar R (2017) Risk of vigabatrin-associated brain abnormalities on MRI in the treatment of infantile spasms is dose-dependent. *Epilepsia* 58(4):674–682. <https://doi.org/10.1111/epi.13712>
 85. Perugula ML, Lippmann S (2016) Fahr’s disease or Fahr’s syndrome? *Innov Clin Neurosci* 13(7–8):45–46
 86. Lee YJ, Park S, Kim YW, Park KM, Kim IH, Park JH, Park BS (2018) A case of seizure revealing Fahr’s syndrome with primary hypoparathyroidism. *Am J Case Rep* 19:1430–1433. <https://doi.org/10.12659/AJCR.913382>
 87. Rudge P, Hyare H, Green A, Collinge J, Mead S (2018) Imaging and CSF analyses effectively distinguish CJD from its mimics. *J Neurol Neurosurg Psychiatry* 89(5):461–466. <https://doi.org/10.1136/jnnp-2017-316853>
 88. Tschampa HJ, Zerr I, Urbach H (2007) Radiological assessment of Creutzfeldt-Jakob disease. *Eur Radiol* 17(5):1200–1211. <https://doi.org/10.1007/s00330-006-0456-2>
 89. Maeda K, Sugihara Y, Shiraishi T, Hirai A, Satoh K (2019) Cortical hyperintensity on diffusion-weighted images as the pre-symptomatic marker of sporadic Creutzfeldt-Jakob disease. *Intern Med* 58(5):727–729. <https://doi.org/10.2169/internalmedicine.1155-18>
 90. Baumann M, Hennes EM, Schanda K, Karenfort M, Kornek B, Seidl R, Diepold K, Lauffer H, Marquardt I, Strautmanis J, Syrbe S, Vieker S, Hofberger R, Reindl M, Rostasy K (2016) Children with multiphasic disseminated encephalomyelitis and antibodies to the myelin oligodendrocyte glycoprotein (MOG): extending the spectrum of MOG antibody positive diseases. *Mult Scler* 22(14):1821–1829. <https://doi.org/10.1177/1352458516631038>
 91. Pohl D, Alper G, Van Haren K, Kornberg AJ, Lucchinetti CF, Tenembaum S, Belman AL (2016) Acute disseminated encephalomyelitis: updates on an inflammatory CNS syndrome. *Neurology* 87(9 Suppl 2):S38–S45. <https://doi.org/10.1212/WNL.0000000000002825>
 92. Armangue T, Olive-Cirera G, Martinez-Hernandez E, Sepulveda M, Ruiz-Garcia R, Munoz-Batista M, Arino H, Gonzalez-Alvarez V, Felipe-Rucian A, Jesus Martinez-Gonzalez M, Cantarin-Extremera V, Concepcion Miranda-Herrero M, Monge-Galindo L, Tomas-Vila M, Miravet E, Malaga I, Arrambide G, Auger C, Tintore M, Montalban X, Vanderver A, Graus F, Saiz A, Dalmau J, Spanish Pediatric anti MOGSG (2020) Associations of paediatric demyelinating and encephalitic syndromes with myelin oligodendrocyte glycoprotein antibodies: a multicentre observational study. *Lancet Neurol* 19(3):234–246. [https://doi.org/10.1016/S1474-4422\(19\)30488-0](https://doi.org/10.1016/S1474-4422(19)30488-0)
 93. Beattie GC, Glaser CA, Sheriff H, Messenger S, Preas CP, Shahkarami M, Venkatesan A (2013) Encephalitis with thalamic and basal ganglia abnormalities: etiologies, neuroimaging, and potential role of respiratory viruses. *Clin Infect Dis* 56(6):825–832. <https://doi.org/10.1093/cid/cis990>
 94. Rumboldt Z (2008) Imaging of topographic viral CNS infections. *Neuroimaging Clin N Am* 18(1):85–92; viii. <https://doi.org/10.1016/j.nic.2007.12.006>
 95. Petropoulou KA, Gordon SM, Prayson RA, Ruggieri PM (2005) West Nile virus meningoencephalitis: MR imaging findings. *AJNR Am J Neuroradiol* 26(8):1986–1995
 96. Akkoc G, Kadayifci EK, Karaaslan A, Atici S, Yakut N, Ocal Demir S, Soysal A, Bakir M (2016) Epstein-Barr virus

- encephalitis in an immunocompetent child: a case report and management of Epstein-Barr virus encephalitis. *Case Rep Infect Dis* 2016:7549252–7549254. <https://doi.org/10.1155/2016/7549252>
97. Soares BP, Provenzale JM (2016) Imaging of herpesvirus infections of the CNS. *Am J Roentgenol* 206(1):39–48. <https://doi.org/10.2214/ajr.15.15314>
98. Smith AB, Smirniotopoulos JG, Rushing EJ (2008) From the archives of the AFIP: central nervous system infections associated with human immunodeficiency virus infection: radiologic-pathologic correlation. *Radiographics* 28(7):2033–2058. <https://doi.org/10.1148/rg.287085135>
99. Roche AD, Rowley D, Brett FM, Looby S (2018) Concentric and eccentric target MRI signs in a case of HIV-associated cerebral toxoplasmosis. *Case Rep Neurol Med* 2018:9876514–9876513. <https://doi.org/10.1155/2018/9876514>
100. Huang BY, Castillo M (2008) Hypoxic-ischemic brain injury: imaging findings from birth to adulthood. *Radiographics* 28(2):417–439; quiz 617. <https://doi.org/10.1148/rg.282075066>
101. Chao CP, Zaleski CG, Patton AC (2006) Neonatal hypoxic-ischemic encephalopathy: multimodality imaging findings. *Radiographics* 26(Suppl 1):S159–S172. <https://doi.org/10.1148/rg.26si065504>
102. Malamud MDN (1950) Status marmoratus: a form of cerebral palsy following either birth injury or inflammation of the central nervous system. *J Pediatr* 37(4):610–619. [https://doi.org/10.1016/S0022-3476\(50\)80272-X](https://doi.org/10.1016/S0022-3476(50)80272-X)
103. Rumboldt Z (2012) Hypertensive hematoma. In: Rumboldt Z, Castillo M, Huang BY, Rossi A (eds) *Brain imaging with MRI and CT: an image pattern approach*. Cambridge University Press, Cambridge, pp 364–365
104. Yang Z, Chen J, Mu J (2017) Simultaneous bilateral basal ganglia hemorrhage. *Curr Drug Deliv* 14(6):807–815. <https://doi.org/10.2174/1567201813666160607202811>
105. Yen CP, Lin CL, Kwan AL, Lieu AS, Hwang SL, Lin CN, Howng SL (2005) Simultaneous multiple hypertensive intracerebral haemorrhages. *Acta Neurochir* 147(4):393–399; discussion 399. <https://doi.org/10.1007/s00701-004-0433-y>
106. McKinney AM, Jagadeesan BD, Truwit CL (2013) Central-variant posterior reversible encephalopathy syndrome: brainstem or basal ganglia involvement lacking cortical or subcortical cerebral edema. *AJR Am J Roentgenol* 201(3):631–638. <https://doi.org/10.2214/AJR.12.9677>
107. Li K, Yang Y, Guo D, Sun D, Li C (2020) Clinical and MRI features of posterior reversible encephalopathy syndrome with atypical regions: a descriptive study with a large sample size. *Front Neurol* 11:194. <https://doi.org/10.3389/fneur.2020.00194>

Publisher's note Springer Nature remains neutral with regard to jurisdictional claims in published maps and institutional affiliations.