

# Overview and management of different post-COVID conditions

---

**Janković Makek, Mateja; Babić, Zdravko; Barun, Barbara; Bašić-Jukić, Nikolina; Bilić, Ervina; Borovečki, Fran; Cerovečki, Venija; Čivljak, Rok; Domislović, Viktor; Gabrić, Ivo Darko; ...**

*Source / Izvornik:* **Rad Hrvatske akademije znanosti i umjetnosti. Medicinske znanosti, 2022, 552, 70 - 81**

**Journal article, Published version**

**Rad u časopisu, Objavljena verzija rada (izdavačev PDF)**

*Permanent link / Trajna poveznica:* <https://um.nsk.hr/um:nbn:hr:184:150355>

*Rights / Prava:* [Attribution-NonCommercial 4.0 International](#)/[Imenovanje-Nekomercijalno 4.0 međunarodna](#)

*Download date / Datum preuzimanja:* **2025-02-02**



*Repository / Repozitorij:*

[Repository of the University of Rijeka, Faculty of Medicine - FMRI Repository](#)



# Overview and management of different post-COVID conditions

Mateja Janković Makek<sup>1</sup>, Zdravko Babić<sup>2</sup>, Barbara Barun<sup>3</sup>, Nikolina Bašić-Jukić<sup>4</sup>, Ervina Bilic<sup>3</sup>, Fran Borovečki<sup>3</sup>, Venija Cerovečki<sup>5</sup>, Rok Čivljak<sup>6</sup>, Viktor Domislović<sup>7</sup>, Ivo Darko Gabrić<sup>2</sup>, Mario Habek<sup>3</sup>, Irzal Hadžibegović<sup>8</sup>, Nenad Jakšić<sup>9</sup>, Tajana Jalušić Glunčić<sup>1</sup>, Željko Krznarić<sup>7</sup>, Ivica Lukšić<sup>10</sup>, Đivo Ljubičić<sup>11</sup>, Darko Marčinko<sup>9</sup>, Alemka Markotić<sup>6</sup>, Ante Marušić<sup>12</sup>, Porin Perić<sup>13</sup>, Željka Petelin Gadže<sup>3</sup>, Delfa Radić Krišto<sup>14</sup>, Gzim Redžepi<sup>15</sup>, Davor Sporiš<sup>16</sup>, Miroslav Samaržija<sup>1</sup>

## OPEN ACCESS

### Correspondence:

Miroslav Samaržija  
predstojnik.kpb@kbc-zagreb.  
hr

This article was submitted to RAD  
CASA - Medical Sciences  
as the original article

### Conflict of Interest Statement:

The authors declare that the research was conducted in the absence of any commercial or financial relationships that could be construed as a potential conflict of interest.

**Received:** 2 June 2022

**Accepted:** 7 June 2022

**Published:** 30 June 2022

### Citation:

Janković Makek M, Babić Z, Barun B, Bašić-Jukić N, Bilic E, Borovečki F, Cerovečki V, Čivljak R, Domislović V, Gabrić I D, Habek M, Hadžibegović I, Jakšić N, Jalušić Glunčić T, Krznarić Ž, Lukšić I, Ljubičić Đ, Marčinko D, Markotić A, Marušić A, Perić P, Petelin Gadže Ž, Radić Krišto D, Redžepi G, Sporiš D, Samaržija M. Overview and management of different post-COVID conditions  
552=58-59 (2022): 70-81  
DOI: 10.21857/mwo1vc32oy

Copyright (C) 2022 Janković Makek M, Babić Z, Barun B, Bašić-Jukić N, Bilic E, Borovečki F, Cerovečki V, Čivljak R, Domislović V, Gabrić I D, Habek M, Hadžibegović I, Jakšić N, Jalušić Glunčić T, Krznarić Ž, Lukšić I, Ljubičić Đ, Marčinko D, Markotić A, Marušić A, Perić P, Petelin Gadže Ž, Radić Krišto D, Redžepi G, Sporiš D, Samaržija M. This is an open-access article distributed under the terms of the Creative Commons Attribution License (CC BY).

The use, distribution or reproduction in other forums is permitted, provided the original author(s) and the copyright owner(s) are credited and that the original publication in this journal is cited, in accordance with accepted academic practice. No use, distribution or reproduction is permitted which does not comply with these terms.

<sup>1</sup> Department of Respiratory Diseases Jordanovac, University Hospital Centre Zagreb, University of Zagreb, School of Medicine

<sup>2</sup> Department of Cardiology, Sestre milosrdnice University Hospital Center, Zagreb, Croatia

<sup>3</sup> Department of Neurology, University Hospital Centre Zagreb, Croatia

<sup>4</sup> Department of Nephrology, Arterial Hypertension, Dialysis and Transplantation, University Hospital Centre Zagreb, Croatia

<sup>5</sup> Department of Family Medicine, School of Medicine, University of Zagreb

<sup>6</sup> University Hospital for Infectious Diseases "Dr. Fran Mihaljević", University of Zagreb School of Medicine, Zagreb, Croatia

<sup>7</sup> Department of Internal Medicine, Unit of Gastroenterology and Hepatology, University Hospital Centre Zagreb, Croatia

<sup>8</sup> Department of Cardiology, University Hospital Dubrava, Zagreb, Croatia

<sup>9</sup> Department of Psychiatry and Psychological Medicine, University Hospital Centre Zagreb, Croatia

<sup>10</sup> Clinical Department of Maxillofacial and Oral Surgery, University Hospital Dubrava, Zagreb, Croatia

<sup>11</sup> Department of Pulmonology, University Hospital Dubrava, Zagreb, Croatia

<sup>12</sup> Department of Radiology, University Hospital Centre Zagreb, Croatia

<sup>13</sup> Department of Rheumatology and Rehabilitation, University Hospital Centre Zagreb, Croatia

<sup>14</sup> Department of Hematology, Clinical Hospital Merkur, Zagreb, Croatia

<sup>15</sup> Primamed Hospital, Zagreb, Croatia

<sup>16</sup> Department of Neurology, Clinical Hospital Dubrava, Zagreb, Croatia

## ABSTRACT:

Coronavirus disease 2019 (COVID-19) pandemic resulted in global healthcare crises and strained health resources, both in the acute and chronic phase of the disease. Similarly to post-acute viral syndromes described in survivors of other virulent coronavirus epidemics, there are increasing reports of persistent and prolonged symptoms after acute COVID-19. These reports and studies have helped contribute to the recognition of post-COVID-19, a syndrome characterized by persistent symptoms and/or delayed or long-term complications beyond 4 weeks from the onset of symptoms. Here, we provide a comprehensive review of different manifestations of post-COVID conditions and propose a framework for the identification of patients at higher risk for post-COVID and their coordinated management through dedicated COVID-19 outpatient clinics.

**KEYWORDS:** COVID-19, post COVID conditions, coronavirus, SARS-CoV-2

## SAŽETAK:

PREGLED I UPRAVLJANJE RAZLIČITIM POST-COVID UVJETIMA

Pandemija bolesti koronavirusa 2019. (COVID-19) rezultirala je globalnom zdravstvenom krizom i opterećenim zdravstvenim resursima, kako u akutnoj tako i u kroničnoj fazi bolesti. Slično kao i kod postakutnih virusnih sindroma opisanih u preživjelih od drugih virulentnih epidemija koronavirusa,

sve je više izvješća o postojanim i produljenim simptomima nakon akutnog COVID-19. Ova izvješća i studije pomogle su pridonijeti prepoznavanju post-COVID-19, sindroma kojeg karakteriziraju trajni simptomi i/ili odgođene ili dugotrajne komplikacije nakon 4 tjedna od početka simptoma. Ovdje pružamo sveobuhvatan pregled različitih manifestacija stanja nakon COVID-a i predlažemo okvir za identifikaciju pacijenata s većim rizikom od post-COVID-a i njihovo koordinirano liječenje kroz namjenske ambulante za COVID-19.

**KLJUČNE RIJEČI:** COVID-19, post COVID uvjeti, koronavirus, SARS-CoV2

## INTRODUCTION

Pandemic of COVID-19, disease caused by SARS-CoV-2 virus, resulted in many persons surviving the acute disease phase. According to the available literature, as well as the experience gathered in our daily work, many of these patients will experience a wide range of symptoms in the period following the acute infection (1-3). Currently, the most widely used term describing the condition is the „post-COVID conditions“. The World Health Organization (WHO) defines this condition as occurring “in individuals with a history of probable or confirmed SARS-CoV-2 infection, usually 3 months from the onset of COVID-19, with symptoms that last for at least 2 months and cannot be explained by an alternative diagnosis“ (4). Despite multiple definitions, there are still no widely accepted clinical diagnostic criteria for post-COVID conditions. Still, the 10th revision of the International Statistical Classification of Diseases and Related Health Problems (ICD) has assigned a code (U09.9) that encompasses all unspecified post-COVID conditions. However, it is still not clear whether the constellation of symptoms following SARS-CoV-2 infection represents a completely new syndrome, unique for COVID-19, or an overlap with the syndrome of recovery after other infectious diseases and disease caused critical conditions. However, it has been shown, in our population as well as in other published cohorts, that the presence of post-COVID symptoms is independent of the severity of acute COVID-19 (5). The distribution of humane ACE2 receptors in different tissues, especially in the circulatory system, enables the wide spread of SARS-CoV-2. Thus, both symptoms of acute COVID-19 and post-COVID conditions vary and may involve a wide range of different organic systems (6).

## PULMONARY MANIFESTATIONS OF POST-COVID CONDITIONS

In general, three out of four most common physical symptoms following acute COVID-19 are related to the respiratory system: dyspnea, cough, and chest pain/tightness. These symptoms may reflect certain structural issues such as interstitial lung disease (with the tendency of developing pulmonary fibrosis) and/or thromboembolic events (with possible emergence of chronic thromboembolic pulmonary hypertension, CTEPH). For diagnostic purposes, we commonly use imaging methods (chest X-ray, high resolution CT (HRCT) of the chest, perfusion/ventilation scintigraphy), lung function tests (spirometry with reversibility testing and diffusing capacity test), and echocardiography. In case a thromboembolic event is diagnosed, treatment recommendations are clear and do not differ significantly from the treatment of embolisms not related to SARS-CoV-2 infection. If there are no other risk factors for blood clotting, aside from COVID-19, recommended treatment time is three to six months with warfarin or one of the new anticoagulants (NOACs) (7). Those who still complain of dyspnea after the treatment period, as well as those with larger embolic masses in the acute phase, should be referred for echocardiography in order to timely diagnose CTEPH. However, in the available literature we still do not have evidence of CTEPH incidence rise (8). The reason behind it may be that pulmonary embolisms connected with COVID-19 are mechanistically different and commonly smaller and peripheral. Moreover, more time is needed for the conclusion, given that CTEPH usually occurs within two years of the acute embolism event (8). Radiologically visible changes have been described in up to 70% of patients following COVID-19 pneumonia three months after the onset of the disease. Moreover, they were still present in 24% of patients even after 12 months (9-12). Organizing pneumonia is the most common manifestation of interstitial lung disease following acute COVID-19 (13). Among lung function tests, predominant are the reduction in diffusing lung capacity for carbon monoxide (DLCO) and restrictive pattern in spirometry, while obstructive pattern is less common and seen in less than 10% of patients (11,14). Typical radiological pattern of OP includes peripheral consolidations with air bronchogram and ground glass opacities (GGO), while solitary or multiple masses/

nodules, perilobar pattern, atoll sign, linear opacifications and progressive fibrosis belong to atypical findings (15). There is no clear guidance or algorithm for both the treatment of parenchymal changes and prevention of fibrosis in the subacute or chronic phase following SARS-CoV-2 infection. Still, in the case of OP, similarly to the management of other OP causes, glucocorticoids seem like a reasonable choice. Dosage and treatment duration depend on the severity of lung parenchyma affection and the level of lung function impairment and vary from 0,25–0,5 mg/kg prednisone for up to 14 days without tapering to pulse doses of prednisone or methylprednisolone with gradual tapering over the weeks/months of the recovery period. A recent prospective

observational study showed first evidence of glucocorticoid effectiveness in patients with OP after acute COVID-19 pneumonia (13). Lastly, in the management of patients with impaired lung function, multidisciplinary approach and pulmonary rehabilitation represent cornerstone therapy. Pulmonary rehabilitation is mostly implemented in the outpatient setting, beginning at least four weeks after the end of acute COVID-19, but can be stationary in the most severe cases, usually immediately or shortly after the end of acute, infective COVID-19 phase. Proposed algorithm for outpatient evaluation of patients with pulmonary post-COVID conditions is shown in Figure 1.

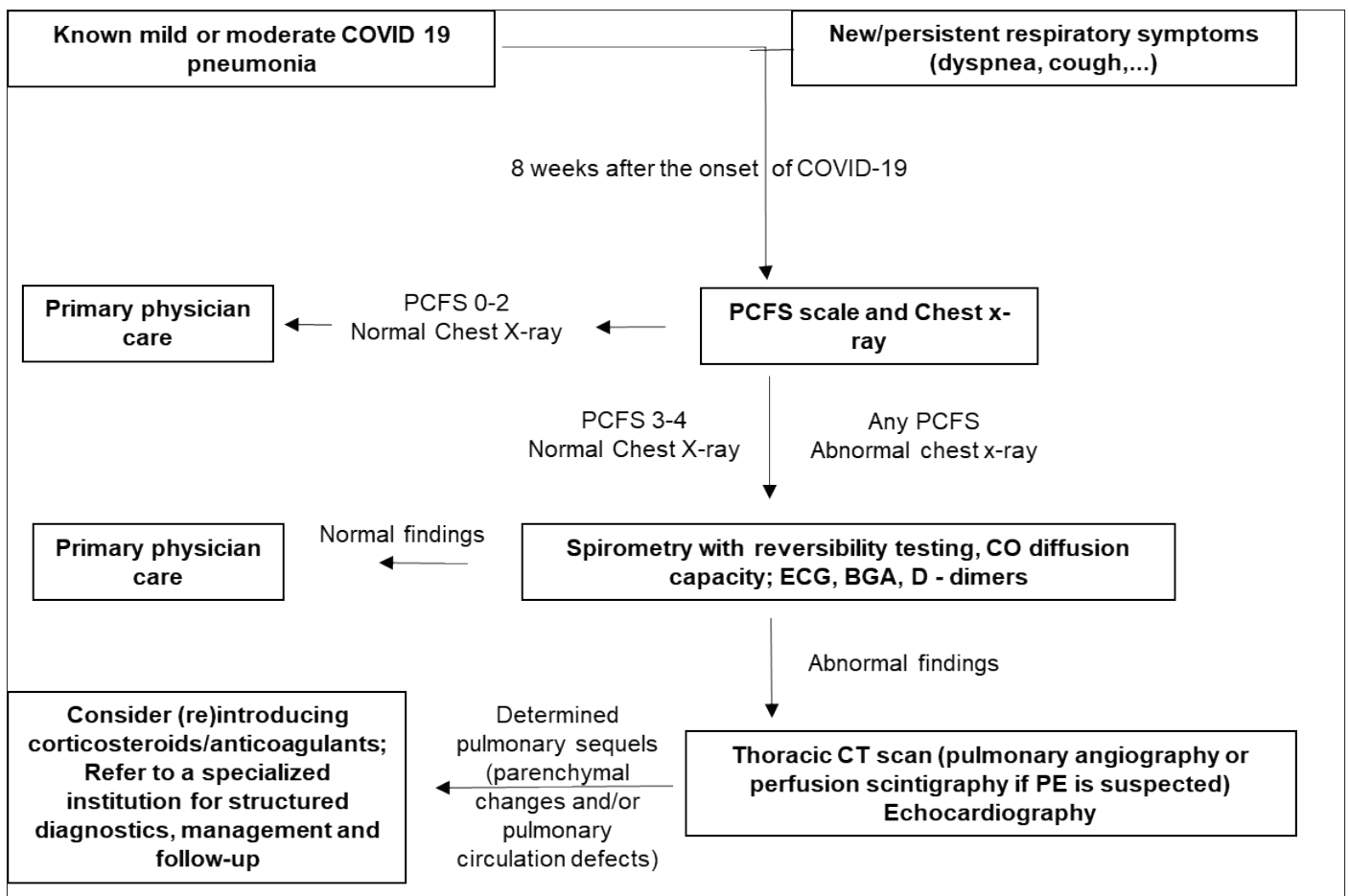


Figure 1. Proposed algorithm for out-patient evaluation of patients with pulmonary manifestation of post-COVID conditions.

ABGA – arterial blood-gas analysis; CO – carbon monoxide; ECG – electrocardiogram; PCFS – post covid functional status

**CARDIAC MANIFESTATIONS OF POST-COVID CONDITIONS**

Cardiovascular symptoms, such as chest pain, palpitations, or higher resting heart frequencies, are among the most common in patients after acute COVID-19. Syndromes such as myocarditis, postural orthostatic tachycardia and pericarditis may also occur. Although small pericardial effusions in post-COVID are relatively common, clear symptomatic pericarditis is rare. Postural orthostatic tachycardia syndrome (POTS) is defined as an inappropriate increase in heart rate without a change in blood pressure when moving from a supine to an upright position. Treatment of POTS varies depending on the degree of symptoms and usually involves a combination of physical exercise and behavioral therapy, and sometimes drug therapy. Given the increased likelihood of a major adverse cardiac event (MACE) in the months following discharge, hospitalized patients with preexisting risk factors for cardiovascular events should be closely monitored after COVID-19. In addition, hospitalized patients with acute COVID-19 who show biomarker evidence of myocardial injury or have had a clear myocardial infarction (most commonly myocardial infarction type 2) require cardiac treatment to determine whether there is underlying coronary artery disease unmasked by increased metabolic demand conditions due to systemic inflammation and to prescribe further

medical, interventional, or cardiac surgical therapy. Overcoming COVID-19 often results in chronic fatigue syndrome (CFS), which is defined as severe, disabling fatigue after exertion that affects physical and mental functioning. To diagnose CFS, symptoms must persist for at least 50% of the time for at least 6 months. Cognitive behavioral therapy with gradual exercise may be an effective treatment in CFS, while pharmacological treatment with antidepressants, steroids, and vitamin supplements has shown mixed results in small clinical trials. COVID-19 is also characterized by marked deconditioning that requires gradual exercise as the only therapy in the post-COVID period (16,17). The tendency to significantly reduce (probably due to patients' fear of hospitalization and infection) the number of patients with acute myocardial infarction and other cardiac diseases in hospitalized patients, especially during the first waves of the COVID-19 pandemic, is monitored across Europe and the United States, but also in our country (18). In addition, the pandemic is accompanied by an increased incidence of some less common complications of myocardial infarction, such as myocardial rupture or cardiogenic shock with consequent long-term decrease in the ejection fraction of the heart and symptoms of its failure. It is to be expected that this will require additional efforts by health systems in treating and monitoring these patients (Figure 2).

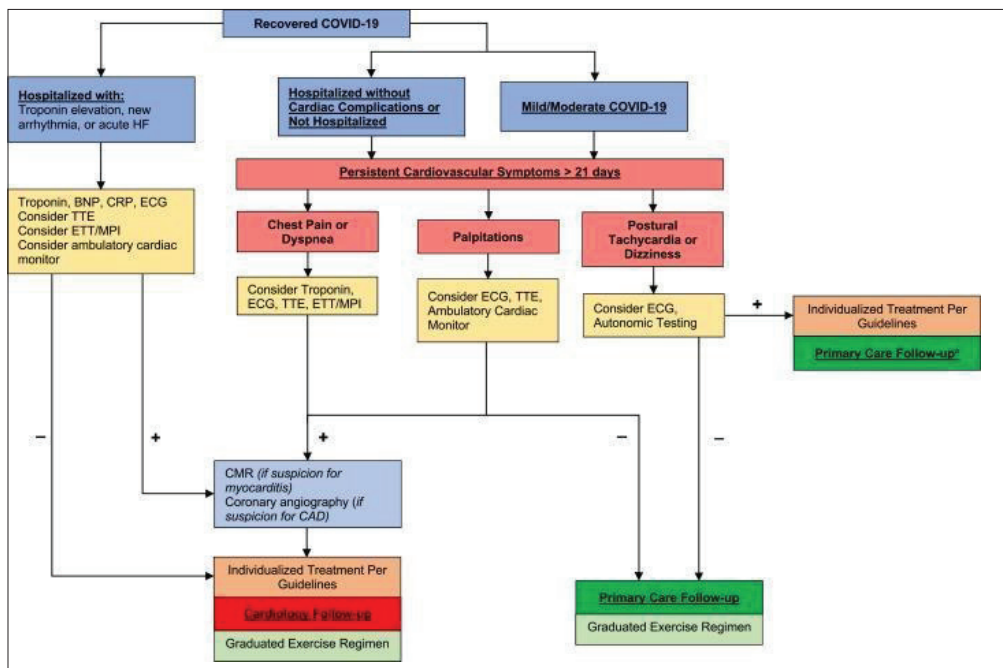


Figure 2. Proposed algorithm for the treatment of patients recovering from COVID-19 with persistent cardiovascular symptoms or previously COVID-19 hospitalized patients with cardiac complications (16)

## NEUROLOGICAL MANIFESTATIONS OF POST-COVID CONDITIONS

Neurological manifestations of post-COVID include a broad spectrum of nonfocal symptoms and signs, such as chronic fatigue, memory disturbances, hyposmia, headache and heaviness in extremities but also include a plethora of focal and specific manifestations of central or peripheral nervous system disturbances. SARS-CoV-2 infection is associated with cognitive and neurodegenerative disorders, demyelinated disorders of the central nervous system (CNS), autoimmune encephalitis, epilepsy as well as with disorders of peripheral nervous system (PNS) (19-21). Coronavirus could be detected in the CNS of patients with Parkinson's disease (PD), Alzheimer's disease (AD) and multiple sclerosis (MS) (10-25). According to human and animal experimental models, SARS-CoV-2 could enter the brain as well as brainstem directly, probably via olfactory nerve, without prior infection of the lungs (23,24). There are several mechanisms which connect movement disorders, especially PD with COVID-19 (22). Even though etiology of PD remains unclear, neuroinflammation of dopaminergic neurons is a potential cause and the presence of the antibodies against coronaviruses in the cerebrospinal fluid (CSF) of PD patients was detected two decades ago (19,22). Also, demyelinated disorders of central nervous system (CNS) such as acute disseminated encephalomyelitis (ADEM), transverse myelitis (TM), MS and neuromyelitis optical spectrum disorder (NMOSD) are associated with SARS-CoV-2 infection (26-28). Current research data have shown that the most common pattern of demyelinated disruption is non-specific encephalitis or encephalomyelitis. The most common manifestation of isolated spinal cord involvement was longitudinal extensive transverse myelitis (LETM). Although SARS-CoV-2 is neurotrophic and passes blood-brain barrier, it is more likely that demyelinated disorders of CNS occur para- or post-infectious due to immune related mechanisms. Autoimmune response in patients with COVID-19 could lead to autoimmune encephalitis or new onset refractory status epilepticus (NORSE), especially in patients with severe manifestations of COVID-19 with respiratory insufficiency. Therapeutic approach in autoimmune encephalitis and NORSE comprises of immunomodulatory treatment (corticosteroids, intravenous immunoglobulins (IVIg) 0.4 g/kg and plasma exchange) together with clinical and electrophysiological follow up (electroencephalographic monitoring) as well as broad differential diagnostic assessment in order to exclude other potential etiologies (29-31). Epileptic seizures could be present either in the post-COVID syndrome or as a manifestation of prolonged COVID-19 (31-33). Post-COVID syndrome could also have PNS involvement: acute and chronic neuropathies, muscle disorders, autoimmune disorder of neuromuscular junction, post infectious disorders of the sensory ganglia and consecutive neuropathic pain (34). These disorders are immune mediated or could develop because of prolonged treatment of

severe COVID-19. The most common disorders of PNS are autoimmune neuropathies and sometimes it is difficult to distinguish certain forms of Guillain-Barre syndrome from acute onset chronic inflammatory demyelinating polyneuropathy. In case of acute inflammatory polyneuropathy, special attention should be paid on the possible autonomic nervous system involvement. It is important to follow up the patient clinically as well as with the electroneurographic assessment and treatment should be individualized (33,34). Treatment approach according to the guidelines includes: IVIG 2 g/kg, corticosteroids, and plasma exchange. Neuropathic pain of radicular distribution could also be a part of post-COVID syndrome. Regardless of prior COVID-19, in case of suspicion on sensory ganglionopathy, diagnostic work up is mandatory including standardized protocol and treatment of consecutive neuropathic pain according to the guidelines (pregabalin, gabapentin, dual antidepressants and topic analgesia if appropriate). In persons with PNS disorders, immune mediated disorders are more prevalent after COVID-19. But one should keep in mind possible PNS complication of prolonged stay in the intensive care units such as critical illness polyneuropathies of myopathies (34,35).

## PSYCHIATRIC MANIFESTATIONS OF POST-COVID CONDITIONS

Approximately 40% of people suffering from acute COVID-19 exhibit signs of a psychiatric disorder, including a vast spectrum of symptoms such as depression, anxiety, phobias, obsessive-compulsive behavior, somatizations, insomnia and lack of appetite, psychoticism, hostility and interpersonal sensitivity (36,37). Also, elevated levels of psychiatric disturbances have been detected even 3 to 7 months post-illness, with a higher risk among women, persons who underwent intensive care treatment and those with longer hospitalization stays, those with multiple comorbidities as well as patients with more intense psychological problems at the start of treatment (38,39). In addition, specific personality traits, namely depressive and cyclothymic temperaments and emotional dysregulation, are known predictors of psychological problems in the post-COVID period (40). Latest research suggests that among some individuals, psychiatric disturbances remain up to 12 months after the onset of COVID-19 (41). Because of occasional delirium and psychotic/manic symptoms in patients who were treated in intensive care units (42), the need for long-term psychiatric and psychological assessment of these individuals is more than evident. Our team has stressed out the importance of psychodynamic understanding of COVID-19 pandemic and individual reactions to this illness (43), as well as the necessity to promote global empathy in order for these patients, and the society as a whole, to achieve psychological growth (44). Evaluation and diagnostics of patients with post-COVID syndrome, particularly those with the elevated risk of developing psychiatric disorders (38-40), should include

psychiatric check-ups and pragmatic clinical assessment via psychometric scales aimed at determining the intensity of psychiatric symptoms. Although unidimensional scales are available, given the large number of different psychiatric symptoms that can emerge, multidimensional psychometric scales seem a better option (e.g., the Symptom Checklist-90-Revised - SCL-90-R). A downside of multidimensional scales is their length so the choice of psychological instruments usually depends on the broader clinical context and psychophysical state of the patient. These psychometric scales have already been used and/or validated in previous research with domestic clinical samples (45-47). For patients with post-COVID syndrome whose results suggest the presence of psychiatric symptoms or who seek out professional help, a face-to-face psychiatric appointment should be organized in the shortest possible time frame. Possible treatments include supportive psychotherapy, psychological counseling or psychoeducation by a psychiatrist or clinical psychologist. In the case of clinically significant psychiatric symptoms, medication therapy should be implemented based on the guidelines for specific psychiatric disorders. However, clinicians should always keep in mind the possibly complex and unique health status (i.e., increased risk of multiple somatic comorbidities) of each post-COVID patient (48,49).

#### HEMATOLOGICAL MANIFESTATIONS OF POST-COVID CONDITIONS

The most common hematological manifestations following acute COVID-19 are laboratory abnormalities. Prothrombotic state, characterized by increased level of factor VIII and plasminogen-activator type I inhibitor (PAI-1), can persist up to four months after acute COVID-19 (50). Lymphocytopenia is commonly seen and may persist at five weeks from the disease onset, especially in patients with severe acute COVID-19 (51). In contrast, neutropenia is rare, but may present a sign of bone marrow suppression due to the inflammatory response (52). Thrombocytopenia, a well-known complication of different viral infections, is another commonly found disorder in patients following acute COVID-19, especially in elderly and patients with lymphopenia (53). Elevated level of D-dimer could be a useful parameter of prothrombotic condition, but there is no connection between D-dimer level and development of late venous thromboembolic events (VTE) (54). Most clinicians consider D-dimer levels as reliable parameter together with clinical predictors of VTE to decide the length of thromboprophylaxis. COVID-19 has been associated with hyperferritinemia which is linked to increased mortality. Levels could be increased more than 2 months after the acute disease (55). But, some patients will have iron deficiency and anemia. COVID-19 induced coagulopathy (CIC) is an immune thrombotic state that develops in acute COVID-19, but persists in chronic COVID-19 with more prothrombotic incidents, less hemorrhagic events (56). Hyperinflammatory

state develops endotheliitis and activation of coagulation cascade, fibrinolysis disruption, thrombin development (57,58). Risk of thrombotic complications in post-COVID period is probably related to the duration and severity of hyperinflammatory condition, but it is unknown for how long this condition could last. Prolonged thromboprophylaxis decreases the risk of thrombotic events, but increases the risk of bleeding. Results from recent studies have shown that the incidence of thrombotic complications in post-COVID era has not been significant, but at present time we don't have a clear ratio of benefits and risks of prolonged thromboprophylaxis (59). Standardized tools for VTE risk assessment should be used in the group of patients with higher VTE risk who need prolonged thromboprophylaxis, up to 6 weeks). Standard risk factors include active malignant disease, immobility, high BMI, recent trauma, thrombophilia, surgical procedure, personal or family history of VTE. Regular monitoring of blood results and evaluation of the individualized thrombotic risk for VTE are essential for both post-acute and chronic COVID-19 (post-COVID) (60,61). Autoimmune thrombocytopenic purpura (ITP), although rarely, has been recognized as a late manifestation of COVID-19, with the highest incidence 3 to 4 weeks after the onset of COVID-19 (62).

#### GASTROINTESTINAL MANIFESTATIONS OF POST-COVID CONDITIONS

The clinical picture of gastrointestinal (GI) post-COVID syndrome is heterogeneous and is similar to the symptoms of irritable bowel syndrome (IBS) which develop after resolution of COVID-19 (63, 64) Some of the symptoms that may be present in GI post-COVID syndrome are anorexia, bloating, abdominal pain, constipation, diarrhea, nausea, or heartburn. In addition to the intestinal symptoms, milder impairment has also been reported in other GI organs in patients with COVID-19, such as liver, pancreas, or spleen. The presumed mechanism of hepatobiliary organ damage is use of hepatotoxic drugs (antibiotics, glucocorticoids, non-steroidal anti-inflammatory agents etc.), systemic inflammatory response, reperfusion liver damage, with a possible direct vital effect (65). Liver damage can be of various types, hepatocellular or cholestatic with possible impairment of all liver enzymes (alkaline phosphatase, gamma-glutamyl transferase, aspartate transferase, alanine transferase). According to the studies, enzyme values returned to normal in most of the patients approximately 2 months after hospital discharge (66). It is important to point out that mortality in patients with liver cirrhosis is higher than in patients without liver cirrhosis, as shown by the study on 754 patients, which supports the fact of significant impact of SARS-CoV-2 on the liver function, especially if there is an underlying liver damage. This is very important in risk stratification and predicting the complicated course of the disease in these patients (67). In addition to the direct viral effect on the GI tract, there are possible indirect complications such as GI

bleeding due to anticoagulant therapy, for example in patients treated for pulmonary embolism after SARS-CoV-2 infection or in patients on prophylactic anticoagulant therapy. On the other hand, a case of simultaneous development of pulmonary embolism and gastrointestinal bleeding in patients without anticoagulant therapy has been described, which also supports the possible direct effect of the virus on intestinal cells and increased risk of bleeding (68). In conclusion, physicians should be aware of a wide range of post-COVID signs and symptoms, from IBS symptoms to liver damage or coagulation impairment. Also, rational drug usage could help in preventing some of the potential GI complications.

### NEPHROLOGICAL MANIFESTATIONS OF THE POST-COVID CONDITIONS

SARS-CoV-2 infection exhibits signs in all organ systems, including kidneys. Studies have revealed kidney injury in 12% of patients (1). Renal complications with the need for renal replacement therapies are present in 5% of all patients after COVID-19 (69). A study including over 4700 patients recovered from acute COVID-19 revealed a 30% decrease in renal function within one year. Additionally, the authors found that patients after COVID-19 have double the incidence of acute kidney injury and end-stage renal disease three times more often than persons who have never had COVID-19 (70).

Dialysis patients have an increased incidence of SARS-CoV-2 infection and higher mortality from acute COVID-19. During post-COVID, cachexia was described as a significant problem in 13% of dialysis patients (71). Renal transplant recipients (RTRs) are a delicate patient population due to chronic immunosuppressive therapy. Mortality rates in recent studies approached 20%, with mortality in patients requiring mechanical ventilation being around 50% (72,73). In the short-term follow-up after acute COVID-19, only 11.5% of RTRs were symptom-free. Most frequent clinical complications include shortness of breath (19.2%) and fatigue (11.5%), while 71.2% of participants had abnormal laboratory findings. Reactivations of opportunistic infections were frequent (74). A recent multicentric study revealed that 15.9% of RTRs required hospital admission after acute COVID-19. Some were readmitted, but a certain proportion represented patients who had mild acute SARS-CoV-2 infection, which did not require hospital treatment. They developed significant clinical and/or laboratory complications which required hospital admission (75). Most frequent indications were pneumonia (24.5%), graft dysfunction (22.4%), sepsis (14.3%) and thrombotic events (10.2%). The strongest indicator of admission after COVID-19 was hospital admission during acute COVID-19, while better graft function decreased the odds of admission after acute COVID-19 (75). Different post-COVID-19 histopathological changes, including the collapsing form of focal segmental glomerulosclerosis were found on indication biopsies

of RTRs with post-COVID renal allograft dysfunction (76). Renal complications are frequent during the acute COVID-19 and should not be neglected during the post-COVID. A structured multidisciplinary approach is required to avoid further deterioration of kidney function in patients with acute kidney injury during the acute SARS-CoV-2 infection and to prevent post-COVID complications in patients with chronic kidney disease.

### ADDRESSING POST-COVID CONDITIONS IN PRIMARY CARE AND FAMILY MEDICINE.

Family physicians (FP) as primary care providers are often the first point of contact for patients experiencing potential post-COVID symptoms (77). It is important to keep in mind that post-COVID syndrome has been identified not only among hospitalized patients with severe symptoms but also among those who were asymptomatic or with mild symptoms. FP should assess these symptoms systematically starting with detailed history and physical examination, followed by judicious test ordering as needed. FP should be equipped to evaluate alternative etiologies of symptoms, validate symptoms as potentially related to post-COVID when appropriate and provide support as needed. Patients with post-COVID symptoms should primarily be managed symptomatically in the primary care setting, avoiding over investigation and considering pre-existing or new comorbidities (78). There is a need for interdisciplinary guidelines for the diagnosis and management of post-COVID conditions, based on joined established criteria to support the provision of appropriate healthcare at the primary care level.

### MUSCULOSKELETAL MANIFESTATIONS OF POST-COVID CONDITIONS

Studies from patients who contracted moderate and severe SARS and COVID-19 have indicated a substantial musculoskeletal burden of these diseases, including skeletal muscle, neurological, bone, and joint disorders (79). Extended ventilator times are also known to induce proinflammatory conditions that lead to muscle and bone frailty, which can reduce overall quality of life. In addition to directly infecting cells outside of the respiratory tract, the inflammatory response in the airway can also lead to systemic inflammation that can impact nearly every organ system, including the musculoskeletal system (79,80). The most common musculoskeletal symptoms are fatigue, myalgia, and arthralgia. Karaarslan and colleagues in their extension cohort study, found that at 3 months, 89% of survivors had at least one symptom, 74.6% had at least one rheumatic and musculoskeletal symptom, and 82.1% had at least one other COVID-19 symptom (81). At 6 months, 59.6% of survivors had at least one symptom, 43.2% had at least one rheumatic and musculoskeletal symptom, and 51.2% had at least one other COVID-19 symptom. Regarding the rheumatic and musculoskeletal symptoms, 31.6% had fatigue, 18.6% had joint pain, and 15.1%



had myalgia; and regarding the other-COVID-19-symptoms, 25.3% had dyspnea, 20% had hair loss, and 17.2% sweat at 6 months. In an adjusted model, female patients were more likely to have fatigue (OR: 1.99, 95% CI: 1.18–3.34), myalgia (3.00, 1.51–5.98), and joint pain (3.39, 1.78–6.50) at 6 months. Less is known about bone and joint than skeletal muscle disorders in patients with COVID-19. Arthralgias are commonly reported in patients with COVID-19, but are often combined with myalgias (81, 82), making it challenging to specifically identify arthralgia prevalence. The reduced BMD observed in patients with SARS was largely thought to be dependent on the extent and duration of treatment with glucocorticoids, which were a mainstay therapy that attempted to reduce inflammation during the initial infection and subsequent early rehabilitation and recovery period (83). However, decreased BMD has also been reported in other acute critical illnesses and may occur independently of treatment with glucocorticoids (84). Osteonecrosis has been frequently reported in patients with severe SARS, with rates from 5% to 58% (79, 85). The majority of these cases involve the femoral head, although the knee, humeral head, talus, calcaneus, and other anatomical sites were affected in lower frequencies (85). Similar to osteoporosis, patients who had higher or longer doses of glucocorticoids had an elevated risk of developing osteonecrosis (79,85). Hypercoagulability has also been noted in both patients with COVID-19 and those with SARS, leading to large-vessel stroke in some patients (79, 86). The SARS-CoV-1 infection can also induce the expression of the E3 ubiquitin ligase gene

TRIM55 in vascular smooth muscle cells, which is associated with leukocyte aggregation and blood vessel inflammation (79). The combination of hypercoagulability, leukocyte aggregation, and vessel inflammation may impair bone microvascular blood flow and contribute to the development of osteonecrosis.

## CONCLUSION

The multi-organ sequelae of COVID-19 beyond the acute phase of infection are increasingly being recognized. Continuation of research, including the identification and characterization of key clinical, serological, imaging and epidemiologic features of COVID-19 in the acute, subacute and chronic phases of disease, will help us to better understand the natural history and pathophysiology of this new disease entity. Currently, healthcare professionals caring for patients after acute COVID-19 have the key role of recognizing, documenting, investigating and managing ongoing or new symptoms, as well as following up organ-specific complications that developed during acute illness. Interdisciplinary cooperation is needed for comprehensive care of these patients in the outpatient setting. Given the global scale of this pandemic, it is apparent that the healthcare needs for patients with sequelae of COVID-19 will continue to increase for the foreseeable future, which will substantially burden the existing outpatient infrastructure. Thus, the development of scalable healthcare models and integration across disciplines for improved mental and physical health of survivors of COVID-19 in the long term is needed.

## REFERENCES

1. Carfi A, Bernabei R, Landi F, Gemelli Against COVID-19 Post-Acute Care Study Group. Persistent Symptoms in Patients After Acute COVID-19. *JAMA*. 2020;324(6):603.
2. Xiong Q, Xu M, Li J, Liu Y, Zhang J, Xu Y, Dong W. Clinical sequelae of COVID-19 survivors in Wuhan, China: a single-centre longitudinal study. *Clin Microbiol Infect*. 2021;27(1):89.
3. Goërtz YMJ, Van Herck M, Delbressine JM, Vaes AW, Meys R, Machado FVC, et al. Persistent symptoms 3 months after a SARS-CoV-2 infection: the post-COVID-19 syndrome? *ERJ Open Res*. 2020;6(4)
4. World Health Organization. A clinical case definition of post-COVID-19 condition by a Delphi consensus, 6 October 2021. [https://www.who.int/publications/i/item/WHO-2019-nCoV-Post\\_COVID-19\\_condition-Clinical\\_case\\_definition-2021.1](https://www.who.int/publications/i/item/WHO-2019-nCoV-Post_COVID-19_condition-Clinical_case_definition-2021.1) (Accessed on March 8th, 2022).
5. Banić M, Janković Makek M, Samaržija M, Muršić D, Boras Z, Trkeš V, et al. Risk factors and severity of functional impairment in long COVID: a single-center experience in Croatia. *Croat Med J*. 2022;63:27-35 <https://doi.org/10.3325/cmj.2022.63.27>
6. Silva Andrade B, Siqueira S, de Assis Soares WR, de Souza Rangel F, Santos NO, Dos Santos Freitas A, et al. Long-COVID and Post-COVID Health Complications: An Up-to-Date Review on Clinical Conditions and Their Possible Molecular Mechanisms. 2021;13(4):700. doi: 10.3390/v13040700.
7. Connors JM, Levy JH. COVID-19 and its implications for thrombosis and anticoagulation. *Blood*. 2020;135(23):2033.
8. Newman J, Boubriak I, Jenkins D, Ng C, Ruggiero A, Screaton N, et al. Rising COVID-19 related acute pulmonary emboli but falling national chronic thromboembolic pulmonary hypertension referrals from a large national dataset. *ERJ Open Res*. 2021;7(4):00431-2021. doi: 10.1183/23120541.00431-2021.
9. Huang C, Huang L, Wang Y, Li X, Ren L, Gu X, et al. 6-month consequences of COVID-19 in patients discharged from hospital: a cohort study. *Lancet*. 2021 Jan 16;397(10270):220-232. doi: 10.1016/S0140-6736(20)32656-8.
10. Parry AH, Wani AH, Shah NN, Jehangir M. Medium-term chest computed tomography (CT) follow-up of COVID-19 pneumonia patients after recovery to assess the rate of resolution and determine the potential predictors of persistent lung changes. *Egyptian Journal of Radiology and Nuclear Medicine* volume 52, Article number:55 (2021)
11. Wu X, Liu X, Zhou Y, Yu H, Li R, Zhan Q, et al 3-month, 6-month, 9-month, and 12-month respiratory outcomes in patients following COVID-19-related hospitalization: a prospective study. *Lancet Respir Med*. 2021;9(7):747.
12. Xiaojun W, Xiaofan L, Yilu Z, Hongying Y, Ruiyun Li, et al. 3-month, 6-month, 9-month, and 12-month respiratory outcomes in patients following COVID-19-related hospitalization: a prospective study. *Lancet Respir Med*. 2021 Jul;9(7):747-754. doi: 10.1016/S2213-2600(21)00174-0.
13. Myall KY, Bukherjee M, Castanheira AM, Lam JL, Benedetti G, Mak SM, et al. Persistent Post-COVID-19 Interstitial Lung Disease. An Observational Study of Corticosteroid Treatment. *Ann Am Thorac Soc*. 2021;18(5):799-806. doi: 10.1513/AnnalsATS.202008-1002OC.
14. Torres-Castro R, Vasconcello-Castillo L, Alsina-Restoy X, Solis-Navarro L, Burgos F, Puppo H, et al. Respiratory function in patients post-infection by COVID-19: a systematic review and meta-analysis. *Pulmonology* Jul-Aug 2021;27(4):328-337. doi: 10.1016/j.pulmoe.2020.10.013.
15. Athol U, Wells et al. Interstitial Lung Disease after COVID-19 Infection: A Catalog of Uncertainties. *Radiology*. Vol. 299, No. 1. Published Online: Jan 26 2021. <https://doi.org/10.1148/radiol.2021204482>
16. Dixit NM, Churchill A, Nsair A, Hsu JJ. Post-Acute COVID-19 Syndrome and the cardiovascular system: What is known? *American Heart Journal Plus: Cardiology Research and Practice*, 5, 2021.
17. Gasecka A, Pruc M, Kukula K, Gilis-Malinowska N, Filipiak KJ, Jaguszewski MJ, Szarpak L. Post-COVID-19 heart syndrome. *Cardiol J*. 2021;28(2):353-354. doi: 10.5603/CJ.a2021.0028.
18. Babić Z, Margetić E, Miličić D. Re: Primary PCI procedures during the COVID-19 pandemic: Global Experience. *Cardiol Croat*. 2020;15(7-8):212-3.
19. Lippi A, Domingues R, Setz C, Outeiro TF, Krisko A. SARS-CoV-2: At the Crossroad Between Aging and Neurodegeneration. *Mov Disord*. 2020 May;35(5):716-720.
20. Rodriguez-Perez AI, Garrido-Gil P, Pedrosa MA, Garcia-Garrote M, Valenzuela R, Navarro G, et al. Angiotensin type 2 receptors: role in aging and neuroinflammation in the substantia nigra. *Brain Behav Immun*. 2019;S0889-1591(19):31128-31136.
21. Antonini A, Leta V, Teo J, Chaudhuri KR. Outcome of Parkinson's disease patients affected by COVID-19. *Mov Disord*. 2020;35(6):905-908.
22. Papa SM, Brundin P, Fung VSC, Kang UJ, Burn DJ, Colosimo C, et al. MDS-Scientific Issues Committee. Impact of the COVID-19 Pandemic on Parkinson's Disease and Movement Disorders. *Mov Disord Clin Pract*. 2020 Apr 16;7(4):357-360.
23. Boutoleau-Bretonnière C, Pouclet-Courtemanche H, Gillet A, Bernard A, Deruet AL, Gouraud I, et al. The Effects of Confinement on Neuropsychiatric Symptoms in Alzheimer's Disease During the COVID-19 Crisis. *J Alzheimers Dis*. 2020;76(1):41-47.

24. Paterson RW, Brown RL, Benjamin L, Nortley R, Wiethoff S, Bharucha T et al. The emerging spectrum of COVID-19 neurology: clinical, radiological and laboratory findings. *Brain* 2020; 143(10):3104–31204.
25. Corrêa DG, de Souza Lima FC, da Cruz Bezerra D, Coutinho AC, Hygino da Cruz LC. COVID-19 associated with encephalo-lomyeloradiculitis and positive anti-aquaporin-4 antibodies: cause or coincidence? *Mult Scler* 2021; 27(6):973–9765.
26. Yavari F, Raji S, Moradi F, Saeidi M. Demyelinating changes alike to multiple sclerosis: a case report of rare manifestations of COVID-19. In: Banerjee TK (ed) *Case reports in neurological medicine*. Hindawi, London, 2020, pp 1–4
27. Ismail II, Salama S. Association of CNS demyelination and COVID-19 infection: an updated systematic review. *J Neurol*. 2021 Aug 12;1–36. doi: 10.1007/s00415-021-10752-x.
28. Manzano GS, McEntire CRS, Martinez-Lage M, Mateen FJ, Hutto SK. Acute Disseminated Encephalomyelitis and Acute Hemorrhagic Leukoencephalitis Following COVID-19: Systematic Review and Meta-synthesis. *Neuro Immunol Neuroinflamm*. 2021 Aug 27;8(6):e1080. doi: 10.1212/NXI.0000000000001080.
29. Guilmot A, Maldonado Sloopjes S, Sellimi A, Bronchain M, Hanseeuw B, et al. Immune-mediated neurological syndromes in SARS-CoV-2-infected patients. *J Neurol*. 2021;268(3):751-757. doi: 10.1007/s00415-020-10108-x.
30. Kincaid KJ, Kung JC, Senetar AJ, Mendoza D, Bonnin DA, Purtlebaugh WL, et al. Post-COVID seizure: A new feature of “long-COVID”. *eNeurologicalSci*. 2021;23:100340. doi: 10.1016/j.ensci.2021.100340.
31. Kuroda N. Epilepsy and COVID-19: Updated evidence and narrative review. *Epilepsy Behav*. 2021;116:107785. doi:10.1016/j.yebeh.2021.107785
32. Manganotti P, Furlanis G, Ajčević M, Moras C, Bonzi L, Pesavento V, Buoite Stella A. Intravenous immunoglobulin response in new-onset refractory status epilepticus (NORSE) COVID-19 adult patients. *J Neurol*. 2021 Mar 11:1–5. doi: 10.1007/s00415-021-10468-y.
33. Nikbakht F, Mohammadkhanizadeh A, Mohammadi E. How does the COVID-19 cause seizure and epilepsy in patients? The potential mechanisms. *Mult Scler Relat Disord*. 2020;46:102535. doi:10.1016/j.msard.2020.102535.
34. Webb S, Wallace VC, Martin-Lopez D, Yogarajah M. Guillain-Barre syndrome following COVID-19: a newly emerging post-infectious complication. *BMJ Case Rep* 2020;14: 1-4. doi: 10.1136/bcr-2020-236182.
35. McWilliam M, Samuel M, Alkufri FH. Neuropathic pain post-COVID-19: a case report. *BMJ Case rep* 2021; 14: 1-3. doi: 10.1136/bcr-2021-243459.
36. Zarghami A, Farjam M, Fakhraei B, Hashemzadeh K, Yazdanpanah MH. A Report of the Telepsychiatric Evaluation of SARS-CoV-2 Patients. *Telemed J E Health*. 2020 Dec;26(12):1461-1465.
37. Xie Q, Liu XB, Xu YM, Zhong BL. Understanding the psychiatric symptoms of COVID-19: a meta-analysis of studies assessing psychiatric symptoms in Chinese patients with and survivors of COVID-19 and SARS by using the Symptom Checklist-90-Revised. *Transl Psychiatry*. 2021 May 17;11(1):290.
38. Fernández-de-Las-Peñas C, Gómez-Mayordomo V, de-la-Llave-Rincón AI, et al. Anxiety, depression and poor sleep quality as long-term post-COVID sequelae in previously hospitalized patients: A multicenter study. *J Infect*. 2021 Jun 27:S0163-4453(21)00319-4.
39. Shanbehzadeh S, Tavahomi M, Zanjari N, Ebrahimi-Takamjani I, Amiri-Arimi S. Physical and mental health complications post-COVID-19: Scoping review. *J Psychosom Res*. 2021 Aug;147:110525.
40. Janiri D, Kotzalidis GD, Giuseppin G, Molinaro M, Modica M, Montanari S, et al. Gemelli Against COVID-19 Post-acute Care Study Group. Psychological Distress After Covid-19 Recovery: Reciprocal Effects With Temperament and Emotional Dysregulation. An Exploratory Study of Patients Over 60 Years of Age Assessed in a Post-acute Care Service. *Front Psychiatry*. 2020 Nov 12;11:590135.
41. Liu D, Baumeister RF, Zhou Y. Mental health outcomes of coronavirus infection survivors: A rapid meta-analysis. *J Psychiatr Res*. 2021 May;137:542-553.
42. Rogers JP, Chesney E, Oliver D, Pollak TA, McGuire P, Fusar-Poli P, et al. Psychiatric and neuropsychiatric presentations associated with severe coronavirus infections: a systematic review and meta-analysis with comparison to the COVID-19 pandemic. *Lancet Psychiatry*. 2020 Jul;7(7):611-627.
43. Marčinko D, Jakovljević M, Jakšić N, Bjedov S, Mindoljević Drakulić A. The Importance of Psychodynamic Approach during COVID-19 Pandemic. *Psychiatr Danub*. 2020 Spring;32(1):15-21.
44. Jakovljevic M, Bjedov S, Jaksic N, Jakovljevic I. COVID-19 Pandemia and Public and Global Mental Health from the Perspective of Global Health Security. *Psychiatr Danub*. 2020 Spring;32(1):6-14.
45. Sagud M, Mihaljević-Peles A, Mück-Seler D, Jakovljević M, Pivac N. Quetiapine augmentation in treatment-resistant depression: a naturalistic study. *Psychopharmacology (Berl)*. 2006 Sep;187(4):511-4.
46. Jovanović N, Kuwert P, Sarajlic Vuković I, Poredos Lavor D, Medved V, et al. Impact of war trauma and posttraumatic stress disorder on psychopathology in Croatian and German patients with severe mental illness. *Croat Med J*. 2010 Apr;51(2):131-6.
47. Jakšić N, Ivezić E, Jokić-Begić N, Surányi Z, Stojanović-Špehar S. Factorial and diagnostic validity of the Beck De-

- pression Inventory-II (BDI-II) in Croatian primary health care. *J Clin Psychol Med Settings*. 2013 Sep;20(3):311-22.
48. Sivan M, Rayner C, Delaney B. Fresh evidence of the scale and scope of long covid. *BMJ*. 2021 Apr 1;373:n853.
  49. Taquet M, Geddes JR, Husain M, Luciano S, Harrison PJ. 6-month neurological and psychiatric outcomes in 236 379 survivors of COVID-19: a retrospective cohort study using electronic health records. *Lancet Psychiatry*. 2021 May;8(5):416-427.
  50. von Meijenfeldt FA, Havervall S, Adelmeijer J, Lundström A, Magnusson M, Mackman N, et al. Sustained prothrombotic changes in COVID-19 patients 4 months after hospital discharge. *Blood Adv*. 2021; 5(3):756-759. doi: 10.1182/bloodadvances.2020003968.
  51. Deng Z, Zhang M, Zhu T, Zhili N, Liu Z, Xiang R, Zhang W, Xu Y. Dynamic changes in peripheral blood lymphocyte subsets in adult patients with COVID-19. *Int J Infect Dis*. 2020; 98:353-358. doi: 10.1016/j.ijid.2020.07.003.
  52. Mank VMF, Mank J, Ogle J, Roberts J. Delayed, transient and self-resolving neutropenia following COVID-19 pneumonia. *BMJ Case Rep*. 2021;14(5): e242596. doi: 10.1136/bcr-2021-242596.
  53. Lippi G, Plebani M, Henry BM. Thrombocytopenia is associated with severe coronavirus disease 2019 (COVID-19) infections: A meta-analysis. *Clin Chim Acta*. 2020; 506:145-148. doi: 10.1016/j.cca.2020.03.022.
  54. Sonnweber T, Sahanic S, Pizzini A, Luger A, Schwabl C, Sonnweber B, et al. Cardiopulmonary recovery after COVID-19: an observational prospective multicentre trial. *Eur Respir J*. 2021;57(4):2003481. doi: 10.1183/13993003.03481-2020.
  55. Sonnweber T, Boehm A, Sahanic S, Pizzini A, Aichner M, Sonnweber B, et al. Persisting alterations of iron homeostasis in COVID-19 are associated with non-resolving lung pathologies and poor patients' performance: a prospective observational cohort study. *Respir Res*. 2020; 21(1):276. doi: 10.1186/s12931-020-01546-2.
  56. Connors JM, Levy JH. COVID-19 and its implications for thrombosis and anticoagulation. *Blood*. 2020; 135(23): 2033-2040. doi:10.1182/blood.2020006000.
  57. Escher R, Breakey N, Lämmle B. Severe COVID-19 infection associated with endothelial activation. *Thromb Res*. 2020; 190:62. doi: 10.1016/j.thromres.2020.04.014.
  58. Pavoni V, Ganesello L, Pazzi M, Stera C, Meconi T, Frigieri FC. Evaluation of coagulation function by rotation thromboelastometry in critically ill patients with severe COVID-19 pneumonia. *J Thromb Thrombolysis*. 2020;50(2):281-286. doi: 10.1007/s11239-020-02130-7.
  59. Nalbandian A, Sehgal K, Gupta A, Madhavan MV, McGroder C, Stevens JS, et al. Post-acute COVID-19 syndrome. *Nat Med*. 2021;27(4):601-615. doi: 10.1038/s41591-021-01283-z.
  60. Schindewolf M, Weitz JI. Broadening the Categories of Patients Eligible for Extended Venous Thromboembolism Treatment. *Thromb Haemost*. 2020;120(1):14-26. doi: 10.1055/s-0039-3400302.
  61. Spyropoulos AC, Lipardi C, Xu J, Peluso C, Spiro TE, De Sanctis Y, et al. Modified IMPROVE VTE Risk Score and Elevated D-Dimer Identify a High Venous Thromboembolism Risk in Acutely Ill Medical Population for Extended Thromboprophylaxis. *TH Open*. 2020;4(1):e59-e65. doi: 10.1055/s-0040-1705137.
  62. Mahévas M, Moulis G, Andres E, Riviere E, Garzaro M, Crickx E, et al. Clinical characteristics, management and outcome of COVID-19-associated immune thrombocytopenia: a French multicentre series. *Br J Haematol*. 2020;190(4):e224-e229. doi: 10.1111/bjh.17024.
  63. Wu Y, Guo C, Tang L, Hong Z, Zhou J, Dong X, et al. Prolonged presence of SARS-CoV-2 viral RNA in fecal samples. *Lancet Gastroenterol Hepatol*. 2020;5:434-435.
  64. Xing YH, Ni W, Wu Q, Li WJ, Li GJ, Wang WD, et al. Prolonged viral shedding in feces of pediatric patients with coronavirus disease 2019. *J Microbiol Immunol Infect*. 2020;53:473-480.
  65. Zhong P, Xu J, Yang D, Shen Y, Wang L, Feng Y, et al. COVID-19-associated gastrointestinal and liver injury: clinical features and potential mechanisms. *Signal Transduct Target Ther*. 2020;5:256.
  66. An YW, Song S, Li WX, Chen YX, Hu XP, Zhao J, et al. Liver function recovery of COVID-19 patients after discharge, a follow-up study. *Int J Med Sci*. 2021;18:176-186.
  67. Marjot T, Moon AM, Cook JA, Abd-Elsalam S, Aloman C, Armstrong MJ, et al. Outcomes following SARS-CoV-2 infection in patients with chronic liver disease: An international registry study. *J Hepatol*. 2021;74:567-577.
  68. Kumar MA, Krishnaswamy M, Arul JN. Post COVID-19 sequelae: venous thromboembolism complicated by lower GI bleed. *BMJ Case Rep*. 2021 Jan 27;14:e241059.
  69. Nalbandian A, Sehgal K, Gupta A, Madhavan MV, McGroder C, Stevens JS. Post-acute COVID-19 syndrome. *Nat Med* 2021; 27(4):601-615.
  70. Bowe B, Xie Y, Xu E, Al-Aly Z. Kidney Outcomes in Long COVID. *J Am Soc Nephrol* 2021; 32(11):2851-62.
  71. Chawki S, Buchard A, Sakhi H, Dardim K, El Sakhawi K, Chawki M, et al. Long-term impact of COVID-19 among maintenance haemodialysis patients. *Clin Kidney J*. 2021;15(2):262-268.
  72. Jayant K, Reccia I, Bachul PJ, Al-Salmay Y, Pyda JS, Podda M, et al. The Impact of COVID-19 on Kidney Transplant Recipients in Pre-Vaccination and Delta Strain Era: A Systematic Review and Meta-Analysis. *J Clin Med* 2021; 10(19):4533.
  73. Chung EYM, Palmer SC, Natale P, Krishnan A, Cooper TE, Saglimbene VM, et al. Incidence and Outcomes of

- COVID-19 in People With CKD: A Systematic Review and Meta-analysis. *Am J Kidney Dis* 2021; 78(6):804-15.
74. Bašić-Jukić N, Jurić I, Furić-Čunko V, Katalinić L, Radić J, Bošnjak Z, et al. Follow-up of renal transplant recipients after acute COVID-19-A prospective cohort single-center study. *Immun Inflamm Dis* 2021; 9(4):1563-72.
75. Bašić-Jukić N, Rački S, Tolj I, Alečković M, Babović B, Jurić I, et al. Hospitalization and death after recovery from acute COVID-19 among renal transplant recipients. *Clin Transplant* 2021:e14572.
76. Bašić-Jukić N, Ćorić M, Bulimbašić S, Dika Ž, Jurić I, Furić-Čunko V et al. Histopathologic findings on indication renal allograft biopsies after recovery from acute COVID-19. *Clin Transplant* 2021; 35(12):e14486.
77. Vance H, Maslach A, Stoneman E, Harmes K, Ransom A, Seagly K, Furst W. Addressing Post-COVID Symptoms: A Guide for Primary Care Physicians. *J Am Board Fam Med*. 2021 Nov-Dec;34(6):1229-1242. doi: 10.3122/jabfm.2021.06.210254. PMID: 34772779.
78. Pavli A, Theodoridou M, Maltezou HC. Post-COVID Syndrome: Incidence, Clinical Spectrum, and Challenges for Primary Healthcare Professionals. *Arch Med Res*. 2021 Aug;52(6):575-581. doi: 10.1016/j.arcmed.2021.03.010. Epub 2021 May 4. PMID: 33962805; PMCID: PMC8093949.
79. Disser NP, De Micheli AJ, Schonk MM, et al. Musculoskeletal Consequences of COVID-19. *J Bone Joint Surg Am*. 2020;102(14):1197-1204. doi:10.2106/JBJS.20.00847
80. Huang C, Wang Y, Li X, et al. Clinical features of patients infected with 2019 novel coronavirus in Wuhan, China. *Lancet*. 2020. February 15;395(10223):497-506. Epub 2020 Jan 24.
81. Karaarslan F, Güneri F.D. & Kardeş S. Long COVID: rheumatologic/ musculoskeletal symptoms in hospitalized COVID-19 survivors at 3 and 6 months. *Clin Rheumatol* 41,289–296 (2022). <https://doi.org/10.1007/s10067-021-05942-x>
82. Easom N, Moss P, Barlow G, Samson A, Taynton T, Adams K, et al. Sixty-eight consecutive patients assessed for COVID-19 infection: experience from a UK regional infectious disease unit. *Influenza Other Respir Viruses*. 2020. Mar 29.; 14 (4): 1-17.
83. Lau EMC, Chan FWK, Hui DSC, Wu AKL, Leung PC. Reduced bone mineral density in male severe acute respiratory syndrome (SARS) patients in Hong Kong. *Bone*. 2005. September; 37(3):420-4.
84. van Niekerk G, Engelbrecht AM. Inflammation-induced metabolic derangements or adaptation: an immunometabolic perspective. *Cytokine Growth Factor Rev*. 2018. October; 43:47-53.
85. Griffith JF. Musculoskeletal complications of severe acute respiratory syndrome. *Semin Musculoskelet Radiol*. 2011. November; 15(5):554-60. Epub 2011 Nov 11.
86. Oxley TJ, Mocco J, Majidi S, Kellner CP, Shoirah H, Singh IP, et al. Large-vessel stroke as a presenting feature of COVID-19 in the young. *N Engl J Med*. 2020. April 28;(April):e60.