

# Pulse wave velocity as a measure of arterial stiffness in patients with familial hypercholesterolemia: a systematic review and meta-analysis

---

Reiner, Željko; Simental-Mendía, Luis; Ruscica, Massimiliano; Katsiki, Niki; Banach, Maciej; Rasadi, Khalid; Jamialahmadi, Tannaz; Sahebkar, Amirhossein

Source / Izvornik: **Archives of Medical Science, 2019, 15, 1365 - 1374**

Journal article, Published version

Rad u časopisu, Objavljena verzija rada (izdavačev PDF)

<https://doi.org/10.5114/aoms.2019.89450>

Permanent link / Trajna poveznica: <https://um.nsk.hr/um:nbn:hr:184:112553>

Rights / Prava: [Attribution 4.0 International](#) / [Imenovanje 4.0 međunarodna](#)

Download date / Datum preuzimanja: **2025-03-18**



Repository / Repozitorij:

[Repository of the University of Rijeka, Faculty of Medicine - FMRI Repository](#)



# Pulse wave velocity as a measure of arterial stiffness in patients with familial hypercholesterolemia: a systematic review and meta-analysis

Željko Reiner<sup>1</sup>, Luis E. Simental-Mendía<sup>2</sup>, Massimiliano Ruscica<sup>3</sup>, Niki Katsiki<sup>4</sup>, Maciej Banach<sup>5,6</sup>, Khalid Al Rasadi<sup>7</sup>, Tannaz Jamialahmadi<sup>8,9</sup>, Amirhossein Sahebkar<sup>10,11,12</sup>

<sup>1</sup>University Hospital Center Zagreb, Department of Internal Medicine, School of Medicine, University of Zagreb, Zagreb, Croatia

<sup>2</sup>Biomedical Research Unit, Mexican Social Security Institute, Durango, Mexico

<sup>3</sup>Department of Pharmacological and Biomolecular Sciences, Università degli Studi di Milano, Milan, Italy

<sup>4</sup>Second Propedeutic Department of Internal Medicine, Medical School, Aristotle University of Thessaloniki, Hippocraton Hospital, Thessaloniki, Greece

<sup>5</sup>Department of Hypertension, WAM University Hospital in Lodz, Medical University of Lodz, Lodz, Poland

<sup>6</sup>Polish Mother's Memorial Hospital Research Institute (PMMHRI), Lodz, Poland

<sup>7</sup>Department of Clinical Biochemistry, Sultan Qaboos University Hospital, Muscat, Oman

<sup>8</sup>Halal Research Center of IRI, FDA, Tehran, Iran

<sup>9</sup>Department of Nutrition, Faculty of Medicine, Mashhad University of Medical Sciences, Mashhad, Iran

<sup>10</sup>Neurogenic Inflammation Research Center, Mashhad University of Medical Sciences, Mashhad, Iran

<sup>11</sup>Biotechnology Research Center, Pharmaceutical Technology Institute, Mashhad University of Medical Sciences, Mashhad, Iran

<sup>12</sup>School of Pharmacy, Mashhad University of Medical Sciences, Mashhad, Iran

## Corresponding author:

Amirhossein Sahebkar

PharmD, PhD

Department of

Medical Biotechnology

School of Medicine

Mashhad University

of Medical Sciences

P.O. Box: 91779-48564

Mashhad, Iran

Phone: +98 5138002288

Fax: +98 5138002287

E-mail:

sahebkar@mums.ac.ir

amir\_saheb2000@yahoo.com

amirhossein.sahebkar@uwa.

edu.au

**Submitted:** 15 June 2019

**Accepted:** 22 June 2019

Arch Med Sci 2019; 15 (6): 1365–1374

DOI: <https://doi.org/10.5114/aoms.2019.89450>

Copyright © 2019 Termedia & Banach

## Abstract

**Introduction:** The aim of this meta-analysis was to establish whether vascular pulse wave velocity (PWV) as a measure of arterial stiffness is changed in patients with familial hypercholesterolemia (FH).

**Material and methods:** Studies comparing PWV between patients with FH and controls were searched in PubMed-Medline, SCOPUS, Web of Science and Google Scholar databases (up to November 26, 2017). A meta-analysis was conducted using Comprehensive Meta-Analysis V2 software. A random-effects model (using the DerSimonian-Laird method) and the generic inverse variance method were used to compensate for the heterogeneity of studies concerning demographic characteristics and differences in the studies' design.

**Results:** This meta-analysis of 8 studies involving 317 patients with FH and 244 non-FH individuals did not suggest a significantly altered PWV in FH patients versus controls (weighted mean difference (WMD): 0.17 m/s, 95% confidence interval (CI): -0.31, 0.65,  $p = 0.489$ ;  $I^2 = 80.15\%$ ). The result was robust in the sensitivity analysis and its significance was not influenced after omitting each of the included studies from the meta-analysis. Subanalysis of 6 of these studies which had data on intima-media thickness (IMT) indicated an increased IMT in FH patients when compared with controls (WMD = 0.03 mm, 95% CI: 0.003, 0.06,  $p = 0.034$ ;  $I^2 = 48.95\%$ ). However, the effect size was sensitive to some of the included studies.

**Conclusions:** This meta-analysis suggests that FH patients do not have significantly altered PWV when compared with normocholesterolemic individuals. However, a subanalysis of studies in which IMT was measured indicated that IMT is increased in FH patients compared with controls.

**Key words:** familial hypercholesterolemia, arterial stiffness, pulse wave velocity, intima-media thickness.

## Introduction

Familial hypercholesterolemia (FH) is an autosomal co-dominant inherited disorder of lipoprotein metabolism characterized by markedly elevated plasma LDL cholesterol (LDL-C) concentration from birth [1]. Therefore, patients with FH have an increased risk of premature development of atherosclerosis, particularly atherosclerotic cardiovascular disease (ACVD) and/or coronary artery disease (CAD) [2]. Although heterozygous FH (HeFH) is one of the most common genetic disorders, and is associated with significant morbidity and mortality, it is very often underdiagnosed and massively undertreated [3–6]. Therefore, recently registries of FH are being developed to assess gaps in care and improve disease management and outcomes [7] and attempts are in progress to identify secondary treatment targets other than LDL-C – which is the most important and primary target – to reduce the risk of ACVD in these patients [8–11]. The prevalence of FH in the general population is estimated at around 1 in 200–500, while there are data indicating that in patients with established CAD, the prevalence of potential FH seems to be even 8.3%; 7.5% in men and 11.1% in women [12]. FH is, in more than 90% of cases, caused by loss-of-function (LOF) mutations in the gene encoding LDL receptor (LDLR), which have as a consequence a decreased cellular uptake of LDL particles and therefore significantly elevated plasma LDL-C concentrations [13]. Currently more than 1700 such mutations have been documented [14, 15]. However, mutations of other genes related to apolipoprotein B that affect the LDLR-binding domain of apolipoprotein B as the most important apolipoprotein for LDL particles' uptake, and the gain-of-function (GOF) mutations of proprotein convertase subtilisin/kexin9 (PCSK9) – a serine protease essential for LDLR recycling – have also been identified and they result in an identical phenotype as patients with LDLR mutations [2, 16].

Atherosclerosis of the arteries causes loss of elasticity and increased rigidity, resulting in increased velocity of pulse waves since they travel faster in stiff arteries. Arterial stiffness is a robust predictor of all-cause and CVD mortality, fatal and non-fatal coronary events and fatal strokes [17–20]. As pulse wave velocity (PWV) is the most widely used and validated technique for estimating arterial stiffness, high PWV represents an early sign of arteriosclerosis/atherosclerosis [21].

Intima-media thickness (IMT), particularly carotid IMT, is recognized as a surrogate marker of atherosclerosis, given its predictive association with CAD [22]. Therefore, it was considered that the measurement of carotid IMT and/or screening for atherosclerotic plaques by carotid artery ultrasound can add information beyond assessment

of traditional risk factors in asymptomatic adults at moderate CV risk [23]. However, the evidence that measurement of common carotid IMT can improve the risk prediction of CVD events is inconsistent [24]. Even the position paper from the European Society of Cardiology Working Group on peripheral circulation stated that it is still unclear whether a specific vascular biomarker (including IMT) is clearly superior and that a prospective study in which all vascular biomarkers are measured is still lacking [25].

The aim of this meta-analysis was to establish whether PWV as a marker of arterial stiffness is changed in patients with FH compared with non-FH individuals. The secondary goal of this meta-analysis was to determine whether IMT is different in FH patients compared with non-FH subjects.

## Material and methods

### Search strategy

The study was designed according to the guidelines for systematic reviews and meta-analysis, the PRISMA statement [26]. SCOPUS, PubMed-Medline, Google Scholar and ISI Web of Science databases were searched using the following search terms in titles and abstracts: (“familial hypercholesterolemia” OR “familial hypercholesterolaemia” OR “familial hypercholesterolemic” OR “familial hypercholesterolaemic”) AND (“pulse wave velocity” OR PWV OR aPWV OR cPWV OR fPWV OR cfPWV OR “arterial distensibility” OR “vascular distensibility” OR “aortic distensibility” OR “arterial stiffness” OR “arterial stiffening” OR “vascular stiffness” OR “vascular stiffening” OR “aortic stiffness” OR “aortic stiffening” OR “arterial compliance” OR “vascular compliance” OR “aortic compliance”). The wild-card term “\*” was used to increase the sensitivity of the search strategy. No language restriction was used in the literature search. The literature was searched from inception to November 26, 2017.

### Study selection

Original studies were included if they met the following inclusion criteria: (i) an observational study (i.e., a case-control, cross-sectional or cohort design), (ii) comparison of vascular PWV between patients with FH and controls without FH, and (iii) presentation of information on PWV in each group. Studies with undefined control groups, duplicate or overlapped populations with a previous study, or reported PWV values in a single group were excluded.

### Data extraction

The following data were basically needed: 1) first author's name, 2) year of publication,

3) study location, 4) age and gender of patients, 5) number of patients (by gender if described), 6) study design, 7) type of FH (homozygous or heterozygous), 8) diagnostic criteria to define FH, 9) IMT values, 10) type of vessel on which PWV was measured, and 11) PWV values.

### Quality assessment

Methodological quality of the included studies was assessed using the Newcastle-Ottawa Scale (NOS) [27]. In this scale, three aspects of each eligible study are evaluated: (i) the selection of the studied patients (4 items), (ii) the comparability of the studied populations (one item) and (iii) the ascertainment of the exposure (3 items) in case-control studies or outcome of interest in cohort studies. A study can be awarded a maximum of one point for each item in the selection and exposure categories, whilst the comparability item can receive a maximum of two points.

### Quantitative data synthesis

A meta-analysis was conducted using Comprehensive Meta-Analysis (CMA) V2 software [28]. All PWV values were collated in m/s. Standard deviation (SD) of the mean difference was calculated using the following formula:

$$S_{\text{pooled}} = \sqrt{\frac{(n_1 - 1)S_1^2 + (n_2 - 1)S_2^2}{n_1 + n_2 - 2}}$$

Where  $n_1$  and  $n_2$  are population sizes of FH and control groups while  $S_1$  and  $S_2$  represent SD values of the respective groups.

If the outcome measures were reported in median and inter-quartile range, mean and SD values were estimated using the method as described by Wan *et al.* [29]. Where standard error of the mean (SEM) was only reported, SD was estimated using the following formula:  $SD = SEM \times \text{sqrt}(n)$ , where  $n$  is the number of subjects.

A random-effects model (using the DerSimonian-Laird method) and the generic inverse variance method were used to compensate for the heterogeneity of studies in terms of demographic characteristics of studied populations and also differences in the study design. Heterogeneity was quantitatively assessed using the  $I^2$  index. Effect sizes were expressed as weighted mean difference (WMD) and 95% confidence interval (CI). In order to evaluate the influence of each study on the overall effect size, sensitivity analysis was conducted using the leave-one-out method, i.e. removing one study each time and repeating the analysis [30–32].

### Publication bias

Potential publication bias was explored using visual inspection of Begg's funnel plot asymmetry,

Begg's rank correlation test and Egger's weighted regression test. The Duval & Tweedie "trim and fill" method was used to adjust the analysis for the effects of publication bias [33].

## Results

### Characteristics of the included studies

Initially, 177 published studies were identified following a multiple database search. After screening of titles and abstracts and removing non-original studies ( $n = 69$ ) and studies that did not meet the inclusion criteria ( $n = 91$ ), 17 full text articles were carefully assessed and reviewed for eligibility. Of these, 11 clinical trials were excluded for not measuring PWV ( $n = 9$ ), because they were performed in a non-FH population ( $n = 1$ ), or were uncontrolled studies ( $n = 1$ ), thus leaving 8 eligible articles for the present meta-analysis (Figure 1).

A total of 317 patients with FH and 244 normocholesterolemic controls were included in this meta-analysis. Included studies were published between 2007 and 2016. FH populations from the following countries were included: Brazil, Greece, Italy, Russia, Poland, Taiwan and the UK. There were 4 studies performed on heterozygous and 4 on unspecified type of FH patients. Study design of selected studies was cross-sectional and case-control.

Concerning the diagnosis of FH, four studies used gene mutation analysis, two studies used the Simon Broome criteria, one study used the Dutch Lipid Clinic Network criteria, and another study used the U.S.MEDPED criteria (Table I).

### PWV assay methods

Different methods were used to measure the PWV. In this regard, one study used a VP-1000 device (Colin Corporation, Komaki, Japan) to measure the brachial-ankle PWV. One study determined the PWV with a Vicorder device (Skidmore medical, Bristol, UK) while another study used echo-tracking software (Aloka Prosound Alpha7, Hitachi-Aloka, Tokyo, Japan) and a 14 MHz linear-type probe to assess the PWV. Two studies measured the PWV using the echo-tracking method with Aloka SSD-Alpha 10-Miro and the automatic system of ultrasound vascular evaluation. Furthermore, two other studies evaluated the PWV with a Complior device (Colson, Garges les Gonesses, France). Finally, Vlahos *et al.* [34] used echo-Doppler ultrasound (Ultrasound ATL, HDI 5000, Bothell, WA) to assess the PWV.

### Quality assessment of the included studies

Most of the studies exhibited sufficient information concerning definition of cases and

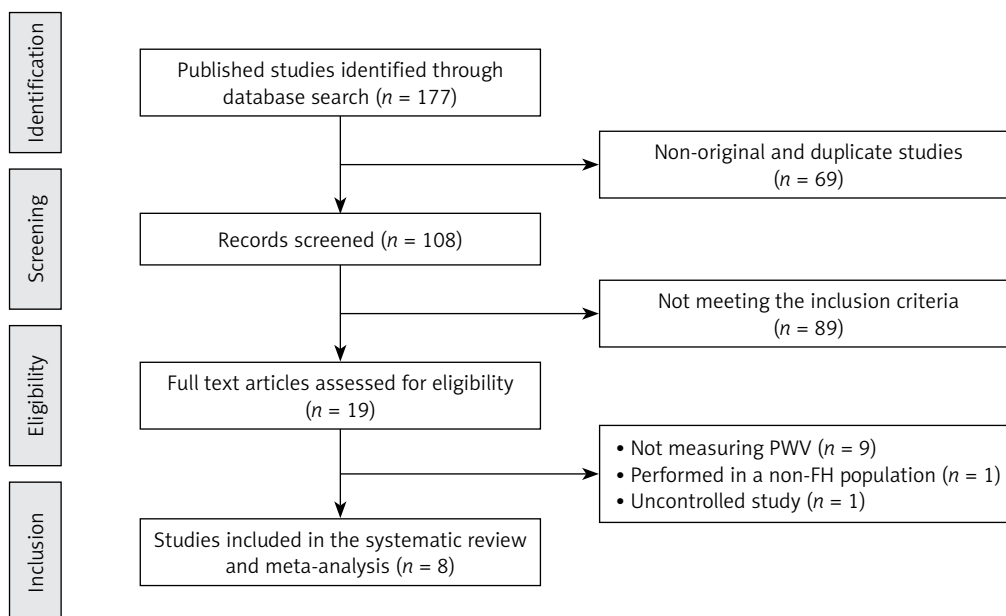


Figure 1. Flow chart of the number of studies identified and included in the meta-analysis

controls, but there was a lack of information regarding representativeness of the cases and selection of controls. Other parameters for quality assessment of the included studies are shown in Table II.

#### Comparison of PWV between patients with FH and controls

Overall, 8 studies compared PWV between patients with FH and normocholesterolemic controls. The meta-analysis did not suggest a significantly altered PWV in FH patients versus controls (WMD = 0.17 m/s, 95% CI: -0.31, 0.65,  $p = 0.489$ ;  $I^2 = 80.15\%$ ) (Figure 2). This result was robust in the sensitivity analysis and its significance was not influenced after omitting each of the included studies from the meta-analysis (Figure 2). In the subgroup analysis, there was no significant difference between subgroups of studies in patients  $\leq 20$  years (WMD = 0.41 m/s, 95% CI: -0.95, 1.76,  $p = 0.557$ ;  $I^2 = 94.41\%$ ) and  $> 20$  years (WMD = 0.07 m/s, 95% CI: -0.39, 0.53,  $p = 0.758$ ;  $I^2 = 62.72\%$ ) (between-group  $p = 0.647$ ). Likewise, the estimated effect size was not significantly different between patients with FH and controls in the subgroup of studies in confirmed HeFH patients (WMD = 0.40 m/s, 95% CI: -0.29, 1.09,  $p = 0.253$ ;  $I^2 = 83.78\%$ ).

Among the included studies, 6 studies also assessed IMT. Subanalysis of these studies indicated an increased IMT in FH patients when compared with controls (WMD = 0.03 mm, 95% CI: 0.003, 0.06,  $p = 0.034$ ;  $I^2 = 48.95\%$ ) (Figure 3). However, the effect size was sensitive to some of the included studies, as shown in Figure 3.

#### Publication bias

There was no evidence of publication bias according to the results of Egger's linear regression (intercept = -1.32, standard error = 2.16, 95% CI: -6.61, 3.97,  $t = 0.61$ ,  $df = 6$ , two-tailed  $p = 0.565$ ) and Begg's rank correlation tests (Kendall's  $\tau$  with continuity correction = -0.04,  $z = 0.12$ , two-tailed  $p = 0.902$ ; Figure 4). The funnel plot of the study standard error by effect size (WMD) was slightly asymmetric. This asymmetry was addressed by imputing one potentially missing study using the "trim and fill" method. After imputation, the effect size was changed to 0.23 (95% CI: -0.25, 0.71) and remained non-significant.

#### Discussion

To our knowledge this is the first meta-analysis evaluating PWV as a measure of arterial stiffness in patients with FH. The results of this meta-analysis suggest that FH patients do not have significantly altered PWV compared with controls. However, a subanalysis of studies in which IMT was measured indicates that IMT is increased in FH patients when compared with controls.

This meta-analysis did not include the most recently published results of a study performed on 245 patients with FH, which suggested a different conclusion, i.e. that arterial stiffness assessed by the PWV was significantly associated with the presence of coronary heart disease in patients with FH [35]. Nevertheless, there was no comparison with normocholesterolemic controls in the study published by Tada *et al.* [35]. Another recent study on 66 patients with FH and their 57 first-degree relatives without FH demonstrated that treat-

Table I. Demographic characteristics of the included studies

Author	Study design	Target population	Type of FH	Diagnostic criteria	N	Study groups	Age [years]	Female n (%)	BMI [kg/m <sup>2</sup> ]	IMT [mm]	Type of vessel	PWV [m/s]
Cheng <i>et al.</i> (2007)	Cross-sectional comparative	FH subjects	Heterozygous	Gene mutation analysis	35 17	FH group Control	37.1 ±17.8 33.0 ±15.0	17 (48.5) 9 (52.9)	22.1 ±4.7 21.5 ±3.6	1.09 ±0.90 0.67 ±0.15	Brachial artery	12.5 ±2.9 11.9 ±2.3
Ellins <i>et al.</i> (2016)	Case-control	FH patients	Unspecified	Simon Broome criteria	22 22	FH group Control	ND ND	ND ND	ND ND	ND ND	Right brachial artery	7.7 ±0.8 8.2 ±0.9
Ershova <i>et al.</i> (2016)	Cross-sectional comparative	FH patients	Heterozygous	Dutch Lipid Clinic Network criteria	66 57	FH group Control	38 (27–48)* 33 (23–42)*	40 (60.6) 31 (54.3)	24.3 (21.5–28.2)* 22.5 (20.4–25.4)*	0.55 (0.50–0.70)* 0.51 (0.46–0.64)*	Carotid artery	5.4 (4.5–6.4)* 4.7 (4.2–5.4)*
Lewandowski <i>et al.</i> (2014)	Cross-sectional comparative	FH patients	Unspecified	Gene mutation analysis	21 19 20	FH group Non-FH group Control	38.9 ±7.4 45.4 ±6.7 41.6 ±7.8	10 (47.6) 8 (42.1) 10 (50.0)	26.1 ±4.1 26.0 ±3.2 24.6 ±4.3	ND ND ND	Right brachial artery	8.7 ±3.3 9.5 ±3.5 10.2 ±4.1
Martinez <i>et al.</i> (2008)	Cross-sectional comparative	FH subjects	Unspecified	U.S.MEDPED criteria	89 31	FH group Control	39 ±14 40 ±12	55 (61.7) 15 (48.3)	25.9 ±4.9 24.7 ±3.5	0.65 ±0.16 0.59 ±0.11	Carotid-femoral arteries	9.2 ±1.5 8.5 ±1.0
Riggio <i>et al.</i> (2010)	Cross-sectional comparative	Children with FH	Heterozygous	Gene mutation analysis	18 26 18	FH group PH group Control	11.8 ±2.8 9.5 ±5.6 9.9 ±1.8	12 (66.6) 16 (61.5) 11 (61.1)	24 ±3 25 ±6 23.6 ±6.3	0.45 ±0.07 0.46 ±0.06 0.45 ±0.09	Carotid artery	4.7 ±0.7 4.1 ±0.5 3.6 ±0.5
Vlahos <i>et al.</i> (2014)	Cross-sectional comparative	Children with FH	Heterozygous	Gene mutation analysis	30 30	FH group Control	12 ±2 12 ±2	13 (43.3) 13 (43.3)	19.8 ±4.0 19.3 ±2.8	0.46 ±0.05 0.45 ±0.03	Carotid-femoral arteries	5.3 ±0.9 5.6 ±0.9
Walus-Miarka <i>et al.</i> (2013)	Cross-sectional comparative	Young patients with FH	Unspecified	Simon Broome criteria	36 49	FH group Control	27.3 ±6.6 25.2 ±6.7	ND ND	23.6 ±3.9 23.2 ±4.5	0.60 ±0.19 0.53 ±0.07	Carotid-femoral arteries	8.4 ±1.5 8.5 ±1.1

Values are expressed as mean ± SD. \*Median (interquartile range). FH – familial hypercholesterolemia, IMT – intima-media thickness, PWV – pulse wave velocity, PH – primary hypercholesterolemia, ND – no data, BMI – body mass index.



Table II. Quality of bias assessment of the included studies according to the Newcastle-Ottawa scale

Study	Selection			Comparability <sup>1</sup>		Exposure		
	Case definition	Representativeness of the cases	Selection of controls	Definition of controls	Comparability of cases and controls	Ascertainment of exposure	Same method of ascertainment	Non-response rate
Cheng <i>et al.</i> (2007)	*	—	—	*	**	*	*	—
Ellins <i>et al.</i> (2016)	*	—	—	—	**	—	*	—
Ershova <i>et al.</i> (2016)	*	—	—	*	**	*	*	—
Lewandowski <i>et al.</i> (2014)	*	*	*	*	**	*	*	—
Martinez <i>et al.</i> (2008)	*	*	—	*	**	*	*	—
Riggio <i>et al.</i> (2010)	*	—	—	—	**	*	*	—
Vlahos <i>et al.</i> (2014)	*	*	—	*	**	*	*	—
Walus-Miarka <i>et al.</i> (2013)	*	—	—	*	**	*	*	—

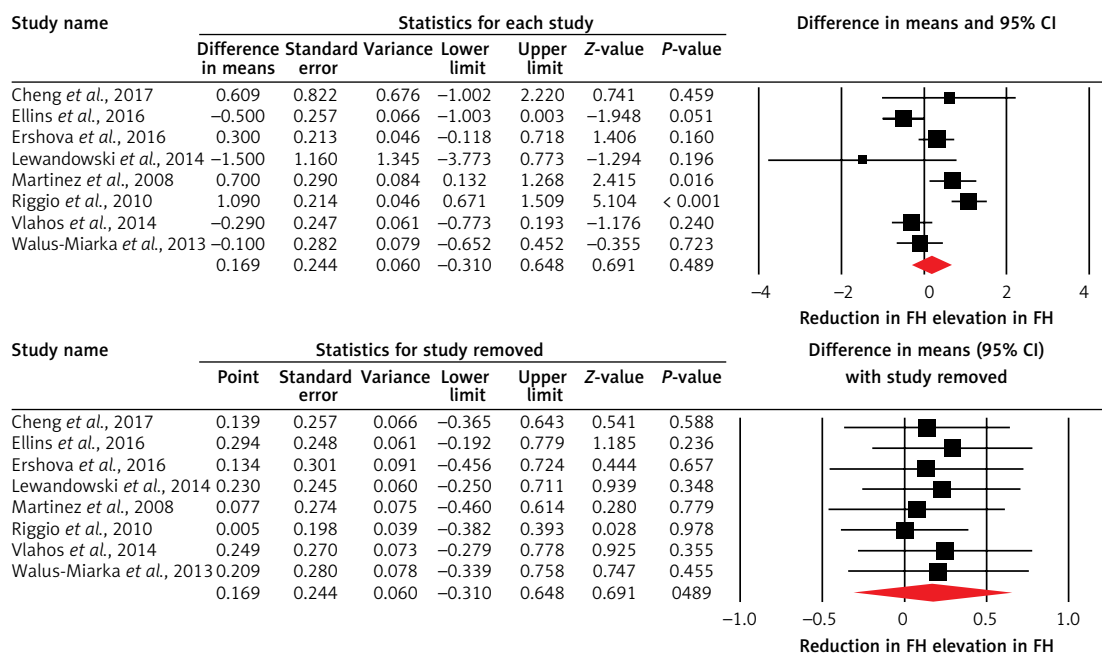
<sup>1</sup>Only for comparability a maximum of two stars can be given.

ment-naïve FH patients had stiffer carotid arteries than their relatives but showed no difference in aortic stiffness [36]. Furthermore, in another relatively small study (81 FH patients compared with normal subjects), these markers poorly correlated among each other in univariate analysis and this correlation disappeared after adjustment for confounders [37]. Other authors could also not find any significant difference in arterial stiffness (assessed by pulse-wave analysis using the echo-tracking method and photoplethysmographic pulse waveform analysis) between patients with and without FH [38].

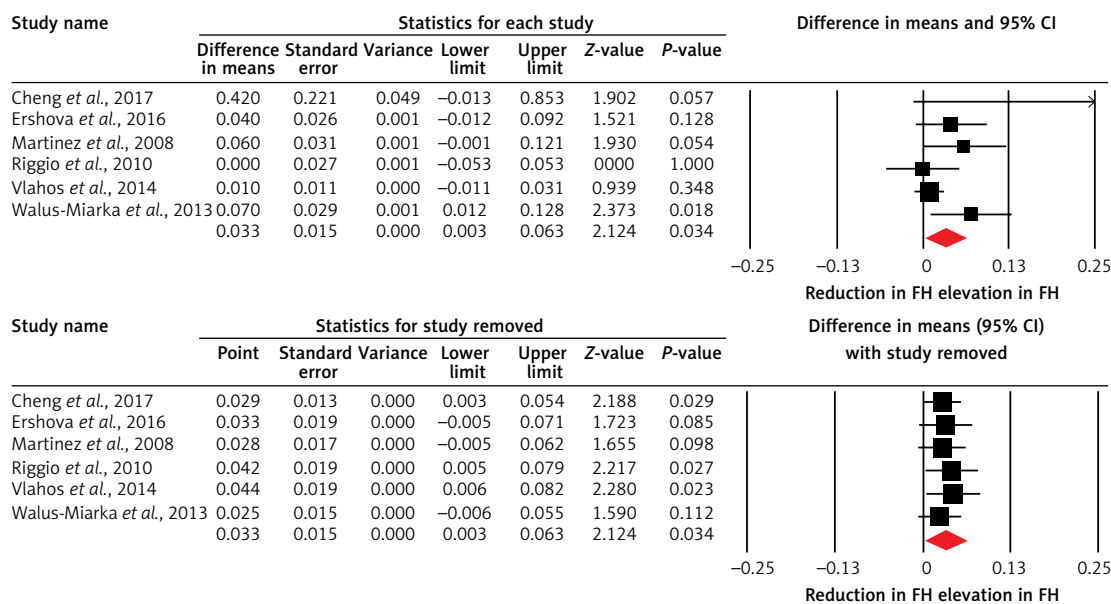
There are reports that arterial stiffness measured by PWV, but not IMT, is increased in untreated hypercholesterolemic children (almost half of them had FH) when compared with age- and sex-matched controls [39]. When mentioning studies in children with FH, a relatively recent study found no significant difference either in arterial stiffness or in carotid IMT between HeFH children and their sex- and age-matched controls without FH [34]. However, a very recent study showed that in HeFH children carotid IMT was significantly greater at baseline when compared with unaffected siblings [40]. The same study indicated that treatment with rosuvastatin for two years resulted in significantly less progression of increased carotid IMT in children with HeFH than untreated unaffected siblings and, as a result, no difference in carotid IMT could be detected between these two groups after 2 years. This confirmed earlier studies indicating that the difference in carotid IMT between children with FH and their unaffected siblings may be significant as early as at 8 years of age, that long-term statin treatment (lasting 10 years) initiated during childhood in patients with FH was associated with normalization of carotid IMT progression, and that earlier statin initiation was associated with thinner carotid IMT at follow-up [41, 42].

It could be supposed that long-lasting lipid-lowering treatment might improve PWV in adult patients with FH. Indeed, it was shown that 1 year of cholesterol lowering therapy with statins (simvastatin, atorvastatin 40–80 mg day) in FH patients can decrease the wall stiffness in the carotid and femoral arterial wall and thickness in the common carotid artery [43].

It is well known that adult patients with FH are not at moderate but either at high or at very high ACVD risk, so there is no point in screening them by carotid IMT measurement in order to improve their risk assessment [44–46]. Therefore, the finding of this meta-analysis, that IMT is increased in FH patients compared with controls, is absolutely logical and fits well with the common knowledge about FH. Moreover, a recent study proved that FH patients with a monogenic cause of the disease



**Figure 2.** Forest plot displaying weighted mean difference and 95% confidence intervals of pulse wave velocity between patients with familial hypercholesterolemia and unaffected controls. Lower plot shows leave-one-out sensitivity analysis



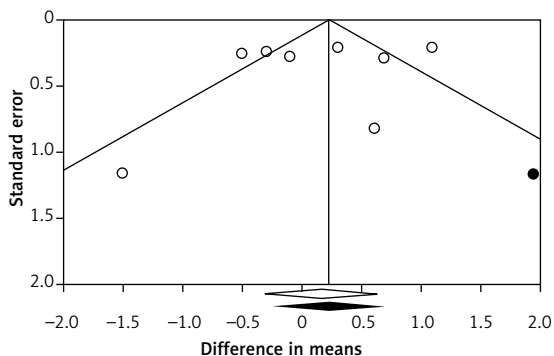
**Figure 3.** Forest plot displaying weighted mean difference and 95% confidence intervals of intima-media thickness between patients with familial hypercholesterolemia and unaffected controls. Lower plot shows leave-one-out sensitivity analysis

have a greater carotid IMT and more severe coronary preclinical atherosclerosis than those with a polygenic etiology [47].

Only one meta-analysis which investigated IMT in FH patients compared to normolipidemic controls has been published, 7 years ago. In this meta-analysis, in FH patients both carotid and femoral IMT values were higher [48]. Nevertheless, this meta-analysis was aimed more at proving that

treatment with statins can improve arterial function and structure in FH patients in a treatment intensity-related manner. In this context it is interesting to mention that one study proved that not only carotid IMT but also carotid plaques did not differ between long-term statin-treated HeFH patients and healthy controls, suggesting that long-term treatment in these patients can reduce carotid atherosclerosis to the degree of a healthy





**Figure 4.** Funnel plot detailing publication bias. Open diamond represents observed effect size; closed diamond represents imputed effect size

population [49]. These findings strongly suggest that measuring carotid IMT during follow-up of statin-treated FH patients has limited value [49]. When mentioning measurement of carotid plaques, a very recent study on 225 patients with FH showed that carotid plaque score determined by carotid ultrasonography may provide superior risk stratification in patients with FH compared with carotid IMT [50].

Our meta-analysis has several limitations. Different scores for FH diagnosis as well as different methods for PWV estimation were used in different studies included in the present meta-analysis and there was a lack of information about the duration of lipid-lowering therapy and type of treatment (i.e. statin type and dose, statin and ezetimibe combined treatment, apheresis, PCSK9 inhibitors). These data are important as statins may improve PWV and arterial stiffness [51, 52] while the information on novel lipid-lowering therapies including PCSK9 inhibitors is scant. In this context, PCSK9 inhibitors have been suggested to have additional effects [53, 54] beyond their well-known lipid-lowering properties [55, 56]. Similarly, antihypertensive drugs may differentially affect PWV based on the type and duration of treatment [57–60].

In conclusion, the present meta-analysis suggests that FH patients do not have significantly altered PWV as a measure of arterial stiffness when compared with normocholesterolemic controls. However, a subanalysis of studies, in which IMT was measured, indicates that IMT is increased in FH patients when compared with controls. Given the prevalence and burden of FH [61–63], additional studies are suggested to assess IMT as a risk predictor in FH individuals. Obviously, larger studies evaluating PWV in FH patients compared with controls in order to elucidate the impact of FH on arterial stiffness as measured by PWV, if any, are needed.

**Conflict of interest**

MB has served on the speaker’s bureau and as an advisory board member for Amgen, Sanofi,

Aventis and Lilly. NK has given talks, attended conferences and participated in trials sponsored by Amgen, Angelini, Astra Zeneca, Boehringer Ingelheim, Galenica, MSD, Novartis, Novo Nordisk, Sanofi and WinMedica. KR received a research grant from Sanofi, and served on the speaker’s bureau and as an advisory board member for Sanofi, Astra Zeneca and Pfizer. ZR has received honoraria from Sanofi Aventis and Akcea. The authors have no other relevant affiliations or financial involvement with any organization or entity with a financial interest in or financial conflict with the subject matter or materials discussed in the manuscript apart from those disclosed.

**References**

1. Catapano AL, Graham I, De Backer G, et al. 2016 ESC/EAS guidelines for the management of dyslipidaemias. *Eur Heart J* 2016; 37: 2999-3058.
2. Reiner Ž. Management of patients with familial hypercholesterolaemia. *Nat Rev Cardiol* 2015; 12: 565-75.
3. Pećin I, Hartgers ML, Hovingh GK, et al. Prevention of cardiovascular disease in patients with familial hypercholesterolaemia: the role of PCSK9 inhibitors. *Eur J Prev Cardiol* 2017; 24: 1383-401.
4. Vallejo-Vaz AJ, Kondapally Seshasai SR, Cole D, et al. Familial hypercholesterolaemia: a global call to arms. *Atherosclerosis* 2015; 243: 257-59.
5. Rynkiewicz A, Cybulska B, Banach M, et al. Management of familial heterozygous hypercholesterolemia: position paper of the Polish Lipid Expert Forum. *J Clin Lipidol* 2013; 7: 217-21.
6. Myśliwiec M, Walczak M, Matecka-Tendera E, et al. Management of familial hypercholesterolemia in children and adolescents. Position paper of the Polish Lipid Expert Forum. *J Clin Lipidol* 2014; 8: 173-80.
7. EAS Familial Hypercholesterolaemia Studies Collaboration, Vallejo-Vaz AJ, Akram A, et al. Pooling and expanding registries of familial hypercholesterolaemia to assess gaps in care and improve disease management and outcomes: rationale and design of the global EAS Familial Hypercholesterolaemia Studies Collaboration. *Atheroscler Suppl* 2016; 22: 1-32.
8. Ganjali S, Momtazi AA, Banach M, et al. HDL abnormalities in familial hypercholesterolemia: focus on biological functions. *Prog Lipid Res* 2017; 67: 16-26.
9. Ganjali S, Momtazi-Borojeni AA, Banach M, et al. HDL functionality in familial hypercholesterolemia: effects of treatment modalities and pharmacological interventions. *Drug Discov Today* 2018; 23: 171-80.
10. Mollazadeh H, Carbone F, Montecucco F, et al. Oxidative burden in familial hypercholesterolemia. *J Cell Physiol* 2018; 233: 5716-25.
11. Momtazi AA, Banach M, Pirro M, et al. MicroRNAs: new therapeutic targets for familial hypercholesterolemia? *Clin Rev Allergy Immunol* 2018; 54: 224-33.
12. De Backer G, Besseling J, Chapman JG, et al. Prevalence and management of familial hypercholesterolaemia in coronary patients: an analysis of EUROASPIRE IV, a study of the European Society of Cardiology. *Atherosclerosis* 2015; 241: 169-75.
13. Goldstein JL, Brown MS. Familial hypercholesterolemia: identification of a defect in the regulation of 3-hydroxy-3-methylglutaryl coenzyme A reductase activity

- associated with overproduction of cholesterol. *Proc Natl Acad Sci USA* 1973; 70: 2804-8.
14. [www.ucl.ac.uk/ldlr/LOVDv.1.1.0/](http://www.ucl.ac.uk/ldlr/LOVDv.1.1.0/)
  15. Fairrozy RH, Futema M, Vakili R, et al. The genetic spectrum of familial hypercholesterolemia (FH) in the Iranian population. *Sci Rep* 2017; 7: 17087.
  16. Abifadel M, Varret M, Rabès JP, et al. Mutations in PCSK9 cause autosomal dominant hypercholesterolemia. *Nat Genet* 2003; 34: 154-56.
  17. Cecelja M, Chowienczyk P. Role of arterial stiffness in cardiovascular disease. *JRSM Cardiovasc Dis* 2012; 1: pii: cvd.2012.012016.
  18. Vlachopoulos C, Aznaouridis K, Stefanadis C. Prediction of cardiovascular events and all-cause mortality with arterial stiffness: a systematic review and meta-analysis. *J Am Coll Cardiol* 2010; 55: 1318-27.
  19. Yamashina A, Tomiyama H, Takeda K, et al. Validity, reproducibility, and clinical significance of noninvasive brachial-ankle pulse wave velocity measurement. *Hypertens Res* 2002; 25: 359-64.
  20. Ziemann SJ, Melenovsky V, Kass DA. Mechanisms, pathophysiology, and therapy of arterial stiffness. *Arterioscler Thromb Vasc Biol* 2005; 25: 932-43.
  21. Laurent S, Cockcroft J, Van Bortel L, et al. Expert consensus document on arterial stiffness: methodological issues and clinical applications. *Eur Heart J* 2006; 27: 2588-605.
  22. Stein JH, Korcarz CE, Hurst RT, et al. Use of carotid ultrasound to identify subclinical vascular disease and evaluate cardiovascular disease risk: a consensus statement from the American Society of Echocardiography Carotid Intima-Media Thickness Task Force. Endorsed by the Society for Vascular Medicine. *J Am Soc Echocardiogr* 2008; 21: 93-111.
  23. Perk J, De Backer G, Gohlke H, et al. European Guidelines on cardiovascular disease prevention in clinical practice (version 2012). The Fifth Joint Task Force of the European Society of Cardiology and Other Societies on Cardiovascular Disease Prevention in Clinical Practice (constituted by representatives of nine societies and by invited experts). *Eur Heart J* 2012; 33: 1635-701.
  24. Den Ruijter HM, Peters SA, Anderson TJ, et al. Common carotid intima-media thickness measurements in cardiovascular risk prediction: a meta-analysis. *JAMA* 2012; 308: 796-803.
  25. Vlachopoulos C, Xaplanteris P, Aboyans V, et al. The role of vascular biomarkers for primary and secondary prevention. A position paper from the European Society of Cardiology Working Group on peripheral circulation: Endorsed by the Association for Research into Arterial Structure and Physiology (ARTERY) Society. *Atherosclerosis* 2015; 241: 507-32.
  26. Moher D, Liberati A, Tetzlaff J, et al. Preferred reporting items for systematic reviews and meta-analyses: the PRISMA statement. *BMJ* 2009; 339: b2535.
  27. Wells GA, Shea B, O'Connell D, et al. The Newcastle-Ottawa Scale (NOS) for assessing the quality of nonrandomized studies in meta-analysis. 2011.
  28. Borenstein M, Hedges L, Higgins J, et al. *Comprehensive Meta-analysis Version 2*. Biostat 2005, Englewood, NJ.
  29. Wan X, Wang W, Liu J, et al. Estimating the sample mean and standard deviation from the sample size, median, range and/or interquartile range. *BMC Med Res Methodol* 2014; 14: 135.
  30. Sahebkar A, Kotani K, Serban C, et al. Statin therapy reduces plasma endothelin-1 concentrations: a meta-analysis of 15 randomized controlled trials. *Atherosclerosis* 2015; 241: 433-42.
  31. Sahebkar A. Does PPARgamma2 gene Pro12Ala polymorphism affect nonalcoholic fatty liver disease risk? Evidence from a meta-analysis. *DNA Cell Biol* 2013; 32: 188-98.
  32. Sahebkar A, Serban C, Mikhailidis DP, et al.; Lipid and Blood Pressure Meta-analysis Collaboration (LBPMC) Group. Association between statin use and plasma D-dimer levels. A systematic review and meta-analysis of randomised controlled trials. *Thromb Haemost* 2015; 114: 546-57.
  33. Duval S, Tweedie R. Trim and fill: a simple funnel-plot-based method of testing and adjusting for publication bias in meta-analysis. *Biometrics* 2000; 56: 455-63.
  34. Vlahos AP, Naka KK, Bechlioulis A, et al. Endothelial dysfunction, but not structural atherosclerosis, is evident early in children with heterozygous familial hypercholesterolemia. *Pediatr Cardiol* 2014; 35: 63-70.
  35. Tada H, Kawashiri MA, Nohara A, et al. Assessment of arterial stiffness in patients with familial hypercholesterolemia. *J Clin Lipidol* 2018; 12: 397-402.e2.
  36. Ershova AI, Meshkov AN, Rozhkova TA, et al. Carotid and aortic stiffness in patients with heterozygous familial hypercholesterolemia. *PLoS One* 2016; 11: e0158964.
  37. Martinez LR, Miname MH, Bortolotto LA, et al. No correlation and low agreement of imaging and inflammatory atherosclerosis' markers in familial hypercholesterolemia. *Atherosclerosis* 2008; 200: 83-8.
  38. Lewandowski P, Romanowska-Kocejko M, Węgrzyn A, et al. Noninvasive assessment of endothelial function and vascular parameters in patients with familial and nonfamilial hypercholesterolemia. *Pol Arch Med Wewn* 2014; 124: 516-24.
  39. Riggio S, Mandraffino G, Sardo MA, et al. Pulse wave velocity and augmentation index, but not intima-media thickness, are early indicators of vascular damage in hypercholesterolemic children. *Eur J Clin Invest* 2010; 40: 250-7.
  40. Braamskamp MJAM, Langslet G, McCrindle BW, et al. Effect of rosuvastatin on carotid intima-media thickness in children with heterozygous familial hypercholesterolemia: The CHARON Study (Hypercholesterolemia in Children and Adolescents Taking Rosuvastatin Open Label). *Circulation* 2017; 136: 359-66.
  41. Kusters DM, Avis HJ, de Groot E, et al. Ten-year follow-up after initiation of statin therapy in children with familial hypercholesterolemia. *JAMA* 2014; 312: 1055-7.
  42. Kusters DM, Wiegman A, Kastelein JJ, et al. Carotid intima-media thickness in children with familial hypercholesterolemia. *Circ Res* 2014; 114: 307-10.
  43. Smilde TJ, van den Berkortel FW, Wollersheim H, et al. The effect of cholesterol lowering on carotid and femoral artery wall stiffness and thickness in patients with familial hypercholesterolemia. *Eur J Clin Invest* 2000; 30: 473-80.
  44. Reiner Ž. Impact of early evidence of atherosclerotic changes on early treatment in children with familial hypercholesterolemia. *Circ Res* 2014; 114: 233-5.
  45. Reiner Ž. Statins in the primary prevention of cardiovascular disease. *Nat Rev Cardiol* 2013; 10: 453-64.
  46. Reiner Ž. Statins for primary prevention: problems with cardiovascular-risk estimation? *Nat Rev Cardiol* 2013; 10: 547.
  47. Sharifi M, Higginson E, Bos S, et al. Greater preclinical atherosclerosis in treated monogenic familial hypercho-

- lesterolemia vs. polygenic hypercholesterolemia. *Atherosclerosis* 2017; 263: 405-11.
48. Masoura C, Pitsavos C, Aznaouridis K, et al. Arterial endothelial function and wall thickness in familial hypercholesterolemia and familial combined hyperlipidemia and the effect of statins. A systematic review and meta-analysis. *Atherosclerosis* 2011; 214: 129-38.
49. Bos S, Duvekot MHC, ten Kate GJR, et al. Carotid artery plaques and intima medial thickness in familial hypercholesterolemia patients on long-term statin therapy: a case control study. *Atherosclerosis* 2017; 256: 62-6.
50. Tada H, Kawashiri MA, Okada H, et al. Assessments of carotid artery plaque burden in patients with familial hypercholesterolemia. *Am J Cardiol* 2017; 120: 1955-60.
51. Upala S, Wirunsawanya K, Jaruvongvanich V, et al. Effects of statin therapy on arterial stiffness: a systematic review and meta-analysis of randomized controlled trial. *Int J Cardiol* 2017; 227: 338-41.
52. Sahebkar A, Pećin I, Tedeschi-Reiner E, et al. Effects of statin therapy on augmentation index as a measure of arterial stiffness: a systematic review and meta-analysis. *Int J Cardiol* 2016; 212: 160-8.
53. Momtazi-Borojeni AA, Nik ME, Jaafari MR, Banach M, Sahebkar A. Effects of immunization against PCSK9 in an experimental model of breast cancer. *Arch Med Sci* 2019; 15: 570-9.
54. Momtazi-Borojeni AA, Nik ME, Jaafari MR, Banach M, Sahebkar A. Potential anti-tumor effect of a nanoliposomal antiPCSK9 vaccine in mice bearing colorectal cancer. *Arch Med Sci* 2019; 15: 559-69.
55. Banach M, Jankowski P, Jóźwiak J, et al. PoLA/CFPIP/PCS guidelines for the management of dyslipidaemias for family physicians 2016. *Arch Med Sci* 2017; 13: 1-45.
56. Banach M, Penson PE. What have we learned about lipids and cardiovascular risk from PCSK9 inhibitor outcome trials: ODYSSEY and FOURIER? *Cardiovasc Res* 2019; 115: e26-31.
57. Koumaras C, Tziomalos K, Stavrinou E, et al. Effects of renin-angiotensin-aldosterone system inhibitors and beta-blockers on markers of arterial stiffness. *J Am Soc Hypertens* 2014; 8: 74-82.
58. Koumaras C, Tzimou M, Stavrinou E, et al. Role of anti-hypertensive drugs in arterial 'de-stiffening' and central pulsatile hemodynamics. *Am J Cardiovasc Drugs* 2012; 12: 143-56.
59. Shahin Y, Khan JA, Chetter I. Angiotensin converting enzyme inhibitors effect on arterial stiffness and wave reflections: a meta-analysis and meta-regression of randomised controlled trials. *Atherosclerosis* 2012; 221: 18-33.
60. Niu W, Qi Y. A meta-analysis of randomized controlled trials assessing the impact of beta-blockers on arterial stiffness, peripheral blood pressure and heart rate. *Int J Cardiol* 2016; 218: 109-17.
61. EAS Familial Hypercholesterolaemia Studies Collaboration, Vallejo-Vaz AJ, De Marco M, Stevens CAT, et al. Overview of the current status of familial hypercholesterolaemia care in over 60 countries – The EAS Familial Hypercholesterolaemia Studies Collaboration (FHSC). *Atherosclerosis* 2018; 277: 234-55.
62. Dyrbuś K, Gaśior M, Desperak P, Osadnik T, Nowak J, Banach M. The prevalence and management of familial hypercholesterolemia in patients with acute coronary syndrome in the polish tertiary centre: results from the TERCET registry with 19,781 individuals. *Atherosclerosis* 2019; 288: 33-41.
63. Banach M, Mazidi M, Mikhailidis DP, et al. Association between phenotypic familial hypercholesterolaemia and telomere length in US adults: results from a multi-ethnic survey. *Eur Heart J* 2018; 39: 3635-40.