

Changes in the Higher Order Ocular Aberrations and Central Corneal Thickness After T-PRK and Fs-LASIK

Biščević, Alma; Pjano, Melisa; Pašalić, Adi; Žiga, Nina; Gabrić, Krešimir; Bohač, Maja

Source / Izvornik: **Acta Informatica Medica, 2020, 28, 98 - 102**

Journal article, Published version

Rad u časopisu, Objavljena verzija rada (izdavačev PDF)

<https://doi.org/10.5455/aim.2020.28.98-102>

Permanent link / Trajna poveznica: <https://urn.nsk.hr/urn:nbn:hr:184:906315>

Rights / Prava: [Attribution-NonCommercial 4.0 International/Imenovanje-Nekomercijalno 4.0 međunarodna](#)

Download date / Datum preuzimanja: **2025-03-25**



Repository / Repozitorij:

[Repository of the University of Rijeka, Faculty of Medicine - FMRI Repository](#)



Changes in the Higher Order Ocular Aberrations and Central Corneal Thickness After T-PRK and Fs-LASIK

Alma Biscevic^{1,2}, Melisa Ahmedbegovic-Pjano¹, Adi Pasalic², Nina Ziga¹, Kresimir Gabric², Maja Bohac²

¹Eye Clinic Svjetlost, Sarajevo, Bosnia and Herzegovina

²University Eye Hospital "Svjetlost" Zagreb, School of Medicine University of Rijeka, Croatia

Corresponding author: Alma Biscevic MD, PhD. University Eye Hospital Svjetlost Zagreb, School of Medicine University of Rijeka, Croatia. Address: Heinzelova 39, 10 000 Zagreb. E-mail: alma.biscevic@svjetlost.hr, alma@svjetlost-sarajevo.ba. c. ORCID ID <http://www.orcid.org/0000-0002-6496-2853>

doi: 10.5455/aim.2020.28.98-102

ACTA INFORM MED. 2020 JUN 28(2): 98-102

Received: Nov 28, 2019

Accepted: Feb 22, 2020

© 2020 Alma Biscevic, Melisa Ahmedbegovic-Pjano, Adi Pasalic, Nina Ziga, Kresimir Gabric, Maja Bohac

This is an Open Access article distributed under the terms of the Creative Commons Attribution Non-Commercial License (<http://creativecommons.org/licenses/by-nc/4.0/>) which permits unrestricted non-commercial use, distribution, and reproduction in any medium, provided the original work is properly cited.

ABSTRACT

Introduction: Refractive surgery procedures, transepithelial photorefractive keratectomy (T-PRK), and femtosecond laser in situ keratomileusis (Fs-LASIK) are regarded as safe and efficacious methods for correcting myopia and myopic astigmatism. These two methods do not have many differences in results when treating spherical myopia while differences exist in the treatment of astigmatism correction. Vector analysis presents a powerful tool to show the real differences between these two methods regarding high ocular aberrations and central corneal thickness of treated eyes. **Aim:** The aim of the study is to investigate changes in higher order ocular aberrations (HOAs) and central corneal thickness (CCT) following treatment of myopia and myopic astigmatism above -5.00DS and up to -2.00DC after either T-PRK or Fs-LASIK. **Methods:** Patients (30 eyes per group) underwent T-PRK (group I) or Fs-LASIK (group II) procedure using the Schwind Amaris 750S laser. HOAs (3mm&5mm pupil) and CCT were measured objectively at pre-, 1,3 & 6 months postop in each case. **Results:** Key results at 6 months were: i) mean values of trefoil (5mm pupil) were 0.092 μ m (sd,0.055,95% CI 0.072 to 0.112) & 0.126 μ m (sd,0.078,95% CI 0.098 to 0.154) in group I, and 0.088 μ m (sd,0.058,95% CI 0.067 to 0.109) & 0.064 μ m (sd,0.034,95% CI 0.052 to 0.076) in group II (P=0.001 at 6 months); ii) Changes in CTT (Δ CTT) and best spherical equivalent correction (Δ BSE) was significant in group II (Δ CCT=-26.55[Δ BSE]-14.06,R=0.486,P=0.006) but not in group I (p=0.034). **Conclusions:** After T-PRK trefoil is worse than Fs-LASIK. The predictability of corneal changes is better following Fs-LASIK. **Keywords:** Higher-order ocular aberrations, Central corneal thickness, T-PRK, Fs-Lasik

1. INTRODUCTION

Transepithelial photorefractive keratectomy (T-PRK) presents a procedure where the corneal epithelium is removed by photo-ablation. This is regarded as a less painful more efficient procedure compared with the more traditional techniques involving either manual scraping or alcohol rub associated with PRK. (1-3, 4-9) The change in central corneal thickness (CCT) following myopic corrections by PRK tends to be less compared with LASIK. (10,11) Thus, on a like-for-like basis, T-PRK is expected to have less of an impact on CCT than LASIK. However, increases in higher-order aberrations (HOAs) such as spherical aberration, coma, and trefoil have been reported after the T-PRK procedure. (5,

11, 12) Femtosecond assisted laser in situ keratomileusis (Fs-LASIK) has been shown to be more predictable compared with LASIK. (6) The efficacy and safety of both Fs-LASIK and T-PRK procedures have been reported by many groups. However, other than studies by Ghadfan et al. (1) and Luger et al. (2), there is a lack of studies directly comparing the outcomes of T-PRK with Fs-LASIK concerning unexpected higher-order aberrations and changes in CCT.

2. AIM

The aim of this study was to compare and contrast the changes in specific HOAs (namely spherical aberration, coma, and trefoil) and CCT after T-PRK and Fs-LASIK procedure.

3. METHODS

Patient Population

This was a retrospective study based on 30 patients that underwent T-PRK and 30 that underwent Fs-LASIK. All surgical procedures were performed with the Schwind Amaris 750S on patients with moderate to high myopia or myopic astigmatism at University Eye Hospital Svjetlost, Zagreb Croatia, between January 2016 and January 2017. The inclusion criteria were: Preop refractive error between -5.00 DS and -7.00 DS with astigmatism no greater than -2.00 DC. No previous history of either refractive surgery or anterior segment conditions known to affect the outcome of any corneal refractive procedure and a follow-up time of 6 months with full refractive data available. Exclusion criteria were thin corneas ($<475\mu\text{m}$), predicted postop stromal bed thickness than $280\mu\text{m}$, any clinical signs of keratoconus, posterior corneal surface elevation of more than $+15.0\mu\text{m}$ evaluated at the thinnest point, estimated postoperative SimK values of less than 35.0 D or greater than 49.0 D, any ocular opacities that could affect visual acuity or signs of progressive retinal disorders. Patients were offered either the T-PRK or the Fs-LASIK procedure. The pros and cons of both procedures were fully explained to all patients. Patients decided freely on their choice of surgery guided by their personal views or economic factors. Patients with central corneal thickness below 500 microns (μm) were advised to opt for T-PRK. Each patient was assigned to a particular treatment group by administrative staff according to the patient's scheduling needs and availability of technical teams required for each procedure. Although this was not a true randomization process, the surgeon performing the treatment did not influence patient assignment to the groups. The retrospective analysis of the data was approved by the local ethics committee. All patients gave their informed consent following the tenets of the Declaration of Helsinki. For patients in whom both eyes fulfilled the defined criteria, only data harvested from right eyes were included in the analytical procedures.

Preoperative Examinations

Complete preoperative ophthalmological examinations were performed included corneal topography and pachymetry (Pentacam HRTM, Oculus Optikgeräte GmbH, Wetzlar, Germany) and aberrometry (L80wave+TM, LuneauSAS, Prunay-le-Gillon, France).

Transepithelial photorefractive Keratectomy (T-PRK)

For T-PRK, the T-PRK program of the Schwind Amaris 750S (Schwind eye-tech-solutions, Kleinostheim, Germany) was used in all cases. Each treatment was planned before surgery using a Sirius planning system and transferred to an SD card that was inserted into the laser. Epithelial removal (50 microns of epithelium selected automatically by the manufacturer) and excimer laser ablation was performed in one step in all cases.

Femtosecond-Assisted Laser in Situ Keratomileusis (Fs-LASIK)

The procedure included a flap of $90\mu\text{m}$ preparation using an Intralase iFS (150 Hz) femtosecond laser (Abbot

Medical Optics, Inc.) which creates an expanding bubble layer of CO_2 and water. The laser was directed at $90\mu\text{m}$ of corneal thickness in a spiral and raster pattern to achieve planar corneal flap. The focal point was 1mm of the range which expanded to $2\text{-}3\text{mm}$ after the photo-disruptive procedure that separated the corneal layers. During the entire procedure, suction was applied and ceased when after the flap was created.

Excimer Ablation

In all cases, the photoablation was performed with the Schwind Amaris 750S excimer laser platform (Schwind eye-tech-solutions, Kleinostheim, Germany) under constant eye-tracking conditions. This laser platform features a five-dimensional 1050Hz infrared eye tracker with simultaneous limbus, pupil, iris recognition, and cyclotorsion tracking integrated into the laser delivery process. The optical zone was selected depending on the individual mesopic pupil diameter (range 6.5 to 7.0 mm) but did not exceed 9.0 mm zone of total ablation. The Aberration Free™ program was used in all cases.

Postoperative examinations

All eyes were checked at the slit lamp at all postop visits. Patients receiving Fs-LASIK were examined after 1 day and 1 week, and those receiving T-PRK after 1, 4 days (depending on the epithelial healing and when the bandage contact lens was removed) and 1 week. Thereafter, follow-up visits were scheduled for 1, 3, and 6 months.

Data and Statistical Analysis

Data were analyzed to determine the significance of changes in the higher-order aberrations (HOAs) and central corneal thickness (CCT), within each group and between groups. The t-test, 2 sample assuming unequal variances, was applied when data were normally distributed. Appropriate non-parametric tests were applied when data were not normally distributed. Changes and differences were considered statistically significant when $P < 0.05$. The data were further analyzed as follows: 1.) to determine the significance of any difference in the mean HOA values between the two groups both before and after treatment (t-test); 2.) to determine the correlation between the change (Δ) in each HOA value and pretreatment HOA value within each of the two groups (Pearson correlation); 3.) to determine the significance of any difference in the mean CCT values between the two groups both before and after treatment (t-test); 4.) to determine the correlation between the change (Δ) in each CCT value and difference (Δ) between best spherical equivalent correction (BSE) at preop and BSE at postop within each of the two groups (Pearson correlation). The significance level was initially set at $P < 0.05$. This was adjusted to $P < 0.009$ using the Bonferroni correction for the number of parameters under consideration.

4. RESULTS

Thirty patients underwent T-PRK and 30 patients underwent the Fs-LASIK (30 right eyes in bilateral cases). No major complications associated with surgery were encountered. This paper is centered on the refractive outcomes as noted from the outset. A summary of the main results of refraction are shown in Table 1.

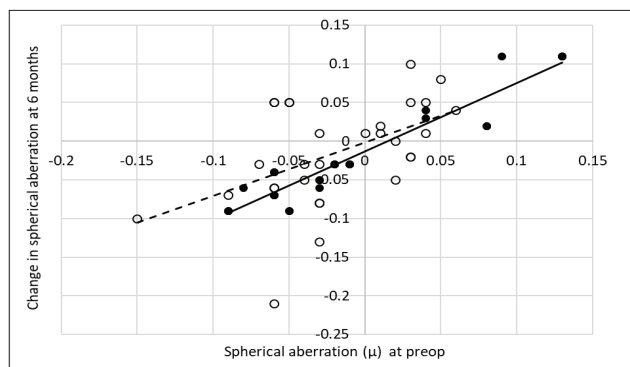


Figure 1. Change in spherical aberration compared and preop value over 5mm pupil.

4.1. HIGH ORDER ABERRATIONS

Chief results are shown in Tables 1, 2, and Fig. 1. In the T-PRK group for the 3mm pupil coma increased by a significant amount (P=0.001) from a mean value of 0.053μm (sd ±0.024, 95% CI 0.044 to 0.062) to 0.098μm (sd ±0.069, 95% CI 0.073 to 0.123) by 1-month postop. There were no other significant differences between pre- and postop values of coma for 3mm or 5mm pupils. The mean value of trefoil increased significantly by 1 month postop by a significant amount (P<0.001) for the 3mm pupil from 0.046μm (sd ±0.022, 95% CI 0.038 to 0.054) to 0.122μm (sd ±0.089, 95% CI 0.091 to 0.154). There were no other significant differences between pre- and postop values in trefoil for the 3mm pupil. For the 5mm pupil the mean value of trefoil increased significantly (P<0.001) from 0.092μm (sd 0.055, 95% CI 0.072 to 0.112) to 0.222μm (sd ±0.119, 95% CI 0.179 to 0.265) and 0.185μm (sd ± 0.107, 95% CI 0.147 to 0.223) at 1 and 3 months postop. The significance of these changes was nullified by 6 months postop. For the 3mm pupil spherical aberration significantly changed (P<0.001) from a mean of 0.003μm (sd ±0.018, 95% CI -0.003 to 0.009) to -0.030μm (sd ±0.042, 95% CI -0.045 to -0.015) and -0.017μm (sd 0.024, 95% CI -0.026 to -0.008) at 1 and 3 months postop. The significance of these changes was nullified by 6 months postop. Changes in the mean spherical aberration for the 5mm pupil were insignificant.

In the Fs-LASIK group, there were no significant changes in mean values of either trefoil or spherical aberration. For the 5mm pupil the mean value of coma increased significantly (P<0.001) from 0.102μm (sd ±0.038, 95% CI 0.088 to 0.116) to 0.197μm (sd ±0.092, 95% CI 0.164 to 0.230) and 0.175μm (sd ±0.107, 95% CI 0.137 to 0.213) at 1 and 3 months postop. The significance of these changes was nullified by 6 months postop. There were no significant changes in mean values of coma for the 3mm pupil.

Intergroup comparison of the HOA values at each time point

There were significant intergroup differences in a coma for the 3 mm pupil at pre- and 1 month (P<0.001) but not at 3 and 6 months postop. For

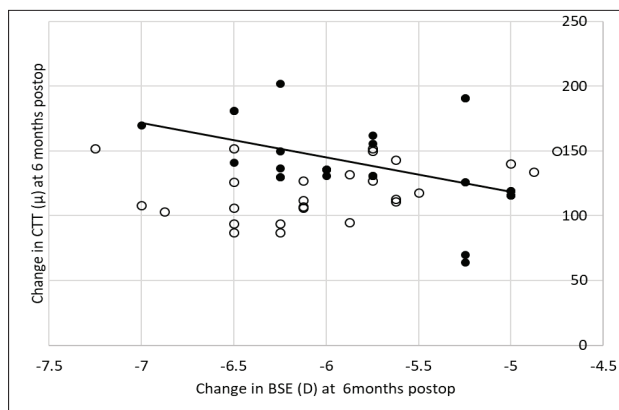


Figure 2. Changes in central corneal thickness and corresponding best spherical equivalent correction at six months postop.

coma over the 5mm pupil, there were no incidences of significant differences between the groups. Concerning trefoil, at preop differences between the two groups were insignificant but significant differences were observed at 1 (3mm and 5mm pupils, P<0.001), 3 (5mm pupil P<0.001) and 6 months (3mm and 5mm pupils, P<0.001). Turning to spherical aberration (SA), at preop differences between the two groups were insignificant but significant differences were observed at 1 (5mm pupils P=0.003) and 3 (3mm and 5mm pupils, P=0.004) months postop but not at 6 months.

Correlation between ΔHOA and preop HOA values within each group

In the T-PRK group, there were no significant associations between Δcoma and preop coma or Δtrefoil and

	T-PRK			
	Pre-op	1 month	3 months	6 months
Coma (3)	.053(.024) 0.044, 0.062	.098(.069) 0.073, 0.123	.063(.042) 0.048, 0.078	.093(.141) 0.043, 0.144
Trefoil (3)	.046(.022) 0.038, 0.054	.122(.089) 0.090, 0.154	.0713(.056) 0.051, 0.091	.061(.041) 0.046, 0.076
SA (3)	.003(.018) -0.003, 0.009	-.030(.042) -0.045, -0.015	-.017(.024) -0.026, -0.008	-.006(.024) -0.009, 0.008
Coma (5)	.135(.084) 0.105, 0.165	.188(.115) 0.147, 0.229	.189(.115) 0.148, 0.230	.160(.120) 0.117, 0.203
Trefoil (5)	.092(.055) 0.072, 0.112	.222(.119) 0.179, 0.265	.185(.107) 0.147, 0.223	.126(.078) 0.098, 0.154
SA (5)	-.019(.049) -0.037, -0.002	-.067(.098) -0.102, -0.032	-.035(.076) -0.062, -0.008	-.005(.061) -0.027, 0.017
	Fs-LASIK			
	Pre-op	1 month	3 months	6 months
Coma (3)	.037(.013) 0.032, 0.042	.049(.024) 0.040, 0.058	.042(.022) 0.034, 0.050	.027(.021) 0.020, 0.035
Trefoil (3)	.103(.172) 0.042, 0.165	.052(.031) 0.041, 0.063	.047(.031) 0.036, 0.058	.024(.018) 0.018, 0.030
SA (3)	.003(.015) -0.002, 0.008	-.010(.027) -0.020, -0.000	-.001(.015) -0.006, 0.004	.0003(.014) -0.005, 0.005
Coma (5)	.102(.038) 0.088, 0.116	.197(.092) 0.164, 0.230	.175(.107) 0.137, 0.213	.134(.074) 0.108, 0.161
Trefoil (5)	.088(.058) 0.067, 0.109	.082(.061) 0.0602, 0.104	.103(.059) 0.082, 0.124	.064(.034) 0.052, 0.076
SA (5)	-.009(.068) -0.033, 0.015	.01(.092) -0.023, 0.043	.016(.048) -0.001, 0.033	.012(.021) 0.005, 0.020

Table 1: Mean values for higher-order aberrations, coma, trefoil and spherical aberration for the Trans epithelial PRK and Femtosecond LASIK groups

Pupil	HOA	Postop Period	
3mm	Coma	1	$\Delta\text{Coma} = 1.637x - 0.073, r=0.6996$ $p < 0.001$
3mm	Coma	3	$\Delta\text{Coma} = 1.041x - 0.044, r=0.5428$ $p = 0.002$
3mm	Coma	6	$\Delta\text{Coma} = 1.055x - 0.029, r=0.5656$ $p = 0.001$
3mm	Trefoil	1	$\Delta\text{Trefoil} = 1.031x - 0.055, r=0.985$ $p < 0.001$
3mm	Trefoil	3	$\Delta\text{Trefoil} = 1.061x - 0.053, r=0.988$ $p < 0.001$
3mm	Trefoil	6	$\Delta\text{Trefoil} = 1.019x - 0.026, r=0.995$ $p < 0.001$
5mm	Trefoil	1	$\Delta\text{Trefoil} = 1.113x - 0.092, r=0.726$ $p < 0.001$
5mm	Trefoil	3	$\Delta\text{Trefoil} = 0.916x - 0.096, r=0.674$ $p < 0.001$
5mm	Trefoil	6	$\Delta\text{Trefoil} = 1.045x - 0.068,$ $r=0.869$ $p < 0.001$
3mm	Spherical Aberration	3	$\Delta\text{SA} = 1.243x, r=0.793$ $p < 0.001$
3mm	Spherical Aberration	6	$\Delta\text{SA} = 0.975x - 0.0003, r=0.729$ $p < 0.001$
5mm	Spherical Aberration	3	$\Delta\text{SA} = 0.660x - 0.019, r=0.726$ $p < 0.001$
5mm	Spherical Aberration	6	$\Delta\text{SA} = 0.884x - 0.014, r=0.952$ $p < 0.001$

Table 2: Change in higher order aberrations (coma, trefoil and spherical aberration) 1,3 and 6 months postop in cases treated with Fs-LASIK procedure

preop trefoil for both 3mm and 5mm pupils. A significant association between Δ spherical aberration (Δ SA) and preop spherical aberration (SA) was found at 6 months postop for the 5mm pupil. The least-squares regression lines equating Δ SA and SA was as follows:

$$\Delta\text{SA} = 0.689\text{SA} - 0.002 \quad (R=0.499, N=30, P=0.005) \quad \text{eq.1}$$

In the Fs-LASIK group, significant associations were revealed between, Δ coma and preop coma for the 3mm pupil only at all time postop periods, Δ trefoil, and preop trefoil for both pupil sizes at all three postop periods, Δ SA and preop SA for both pupil sizes at 3 and 6 months postop. The least-squares regression line equating Δ SA and SA at 6 months postop for the 5mm pupil was as follows:

$$\Delta\text{SA} = 0.884\text{SA} - 0.014 \quad (R=0.952, N=30, P<0.001) \quad \text{eq.2}$$

The difference between the two matched correlation coefficients was significant ($Z=-4.781, P<0.001$). The indices of the least-squares regression lines of significance equating Δ HOA (y) and preop HOA (x) values are shown in Table 2. Figure 1 shows the relationships between the change in spherical aberration observed at 6 months postop and the respective preop values in each case.

4.2. PACHYMETRY

The chief results are shown in Fig. 2. In the T-PRK group mean central corneal thickness (CCT) was 512.4µm (sd $\pm 23.7, 95\% \text{ CI } 504.0 \text{ to } 520.9$) at preop and 390.9 µm (sd $\pm 32.2, 95\% \text{ CI } 379.4, \text{ to } 402.4$) at 6 months postop. In the Fs-LASIK group, CCT was 551.5 µm (sd $\pm 21.7, 95\% \text{ CI } 504.0 \text{ to } 520.8$) at preop and 413.3 µm (sd $\pm 30.2, 95\% \text{ CI } 379.4 \text{ to } 402.4$) at 6 months postop. Intergroup differences were significant on all occasions ($P<0.001$).

Correlation between Δ CCT and preop Δ BSE values

At 6 months postop the mean change in best spherical equivalent (BSE) was -5.84DS (sd $\pm 0.84, 95\% \text{ CI } -6.14 \text{ to } -5.54$) in the T-PRK group and -5.91DS (sd $\pm 0.60, 95\% \text{ CI } -6.12 \text{ to } -5.70$) in the Fs-LASIK group. The difference between the groups was not significant. In the T-PRK group, there was no significant association between Δ CCT and Δ BSE ($p=0.034$) after the Bonferroni correction. In the Fs-LASIK group there was a significant association between Δ CCT and Δ BSE where: $\Delta\text{CCT} = -26.55(\Delta\text{BSE}) - 14.06$ ($R=0.486, N=30, P=0.006$) eq.3

5. DISCUSSION

Table 1 shows, the mean values for coma, trefoil, and spherical aberration tended to increase after T-PRK. These results confirm previous reports. (1, 4, 12, 13) However, by 6 months postop the changes we observed were not significant when compared with preop values. In the Fs-LASIK group, mean values for the HOAs remained moderately stable throughout, except for coma that tended to increase but reverted towards the preop level by 6 months postop. At preop, there were no significant intergroup differences for trefoil and spherical aberration. However, at various points over the postop period, significant intergroup differences were exposed. The indices of the best-fit equations listed in Table 2 verify that, on an individual case-by-case basis, changes in the magnitude of HOAs after Fs-LASIK are highly predictable. This cannot be said for T-PRK except for changes in spherical aberration at 6 months postop (eq.1). Though changes in spherical aberration can be predicted in T-PRK cases, the differences between eqs 1 and 2 reveal that predicting individual changes after Fs-LASIK are more precise, less prone to error, than T-PRK. T-PRK tends to have a more adverse effect on HOAs compared with Fs-LASIK. Wen et al. (6) concluded there was no real difference in the HOAs between T-PRK and Fs-LASIK. Our findings are not in accordance with their conclusion. Throughout the investigation, the mean central corneal thickness (CCT) was always greater in the Fs-LASIK group. Extrapolating from our results, the change in CCT is 20.9µ per diopter of BSE after T-PRK and 23.4µ per diopter of BSE after Fs-LASIK. This is a clear indication of the tissue saving advantage of T-PRK over Fs-LASIK. Kriegerowski et al. (14) showed that changes in the structure of the corneal stroma along the anteroposterior depth of the stroma affect the rate of photoablation at different regions of the stroma. The anterior stroma is more amenable to photoablation and, as such, less tissue is required to be removed from the anterior region to achieve a change in the unit change in refraction. Our results comply with this assertion. The relationship between Δ CCT and Δ BSE, as shown in Fig. 2, for the T-PRK cases ($P=0.034$) was deemed insignificant after making the Bonferroni correction but this was not the case after Fs-LASIK. The indices of eq.3 signify that estimating changes in CCT after Fs-LASIK for myopia and/or myopic astigmatism is highly predictable. A feature that cannot be said for T-PRK. In keeping with more traditional findings after PRK, Hou et al. (15) found central epithelial thickness increased between 1 and 6 months

after T-PRK. Also, they found greater amounts of thickening took place in paracentral regions of the cornea resulting in an epithelial lenticule with the appearance of a negatively powered lens. Modulation of epithelial thickness distribution could be the source of uncertainty in the Δ CCT and Δ BSE relationship after T-PRK.

6. CONCLUSION

Both corneal surgical methods for treating myopia and myopic astigmatism show safe and efficient results when dealing with higher order ocular aberrations and central corneal thickness. However, after T-PRK trefoil is worse than Fs-LASIK. The predictability of corneal changes is better following Fs-LASIK.

- **Author's Contribution:** A.B, M.A.P. and A.P gave substantial contributions to the conception or design of the work in acquisition, analysis, or interpretation of data for the work. N.Z, K.G, I.G and M.B had a part in article preparing for drafting or revising it critically for important intellectual content, and A.B and M.B gave final approval of the version to be published and agreed to be accountable for all aspects of the work in ensuring that questions related to the accuracy or integrity of any part of the work are appropriately investigated and resolved.
- **Financial support and sponsorship:** None.
- **Conflicts of interest:** There are no conflicts of interest.

REFERENCES:

1. Ghadhfan F, Al-Rajhi A, Wagoner MD. Laser in situ keratomileusis versus surface ablation: visual outcomes and complications. *J Cataract Refract Surg.* 2007;33:2041-8.
2. Luger MH, Ewering T, Arba-Mosquera S. Myopia correction with transepithelial photorefractive keratectomy versus femtosecond assisted laser in situ keratomileusis: one-year case-matched analysis. *J Cataract Refract Surg* 2016;42:1579-87.
3. Aslanides IM, Georgoudis PN, Selimis VD, Mukherjee AN. Single-step transepithelial ASLA (SCHWIND) with mitomycin-C for correction of high myopia: long term follow-up. *Clin Ophthalmol* 2015;9:33-41.
4. Adib-Moghaddam S, Soleyman-Jahi S, Salmanian B et al. Single-step transepithelial photorefractive keratectomy in myopia and astigmatism: 18-month follow-up. *J Cataract Refract Surg* 2016;42:1570-78.
5. Antonios R, Abdul Fattah M, Arba Mosquera S et al. Single-step transepithelial versus alcohol-assisted photorefractive keratectomy in the treatment of high myopia: a comparative evaluation over 12 months. *Br J Ophthalmol* 2017;101:1106-12.
6. Wen D, McAlinden C, Flitcroft I et al. Postoperative Efficacy, Predictability, Safety, and Visual Quality of Laser Corneal Refractive Surgery: A Network Meta-analysis. *Am J Ophthalmol* 2017;178:65-78.
7. Celik U, Bozkurt E, Celik B et al. Pain, wound healing and refractive comparison of mechanical and transepithelial debridement in photorefractive keratectomy for myopia: results of 1 year follow-up. *Cont Lens Anterior Eye* 2014;37(6):420-6.
8. Zarei-Ghanavati S, Shandiz JH, Abrishami M, Karimpour M. Comparison of mechanical debridement and trans-epithelial myopic photorefractive keratectomy: A contralateral eye study. *J Curr Ophthalmol* 2019;23;32:135-141.
9. Fattah MA, Antonios R, Arba Mosquera S et al. Epithelial Erosions and Refractive Results After Single-Step Transepithelial Photorefractive Keratectomy and Alcohol-Assisted Photorefractive Keratectomy in Myopic Eyes: A Comparative Evaluation Over 12 Months. *Cornea* 2018;37:45-52.
10. de Ortueta D, von Rueden D, Verma S et al. Transepithelial Photorefractive Keratectomy in Moderate to High Astigmatism With a Non-wavefront-Guided Aberration-Neutral Ablation Profile. *J Refract Surg* 2018;34(1):466-474.
11. Pokroy R, Mimouni M, Sela T, Munzer G, Kaiserman I. Predictors of myopic photorefractive keratectomy retreatment. *J Cataract Refract Surg* 2017;43:825-832.
12. Thibos LN, Wheeler W, Horner D. Power Vectors: an Application of Fourier Analysis to the Description and Statistical Analysis of Refractive Error. *Optom Vis Sci* 1997;74:367-75.
13. Alpíns NA. A New Method of Analyzing Vectors for Changes in Astigmatism. *J Cataract Refract Surg* 1993;19:524-33.
14. Kriegerowski M, Bende T, Seiler T, et al. THE ABLATION BEHAVIOR OF VARIOUS CORNEAL LAYERS. *Fortschr Ophthalmol* 1990;87:11-3.
15. Hou J, Wang Y, Lei Y, et al. Corneal Epithelial Remodeling and its Effect on Corneal Asphericity after Transepithelial Photorefractive Keratectomy for Myopia. *J Ophthalmol* 2016;85:823-62.